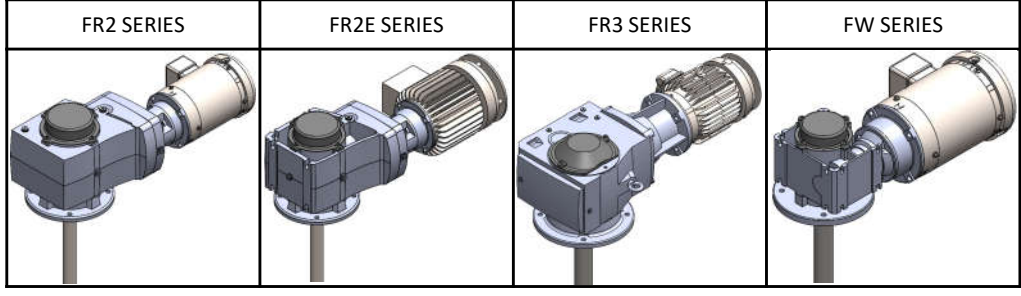


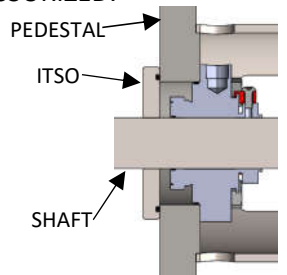
RT153 SEAL REMOVAL – FABRICATED PEDESTAL



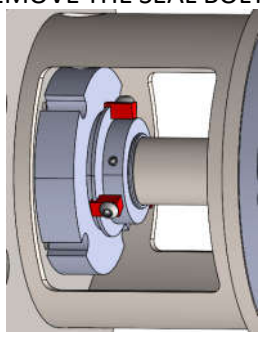
IN TANK SHUT-OFF

COMPLETE TS-105 (ENGAGING THE IN TANK SHUT-OFF) PRIOR TO USING THIS TS

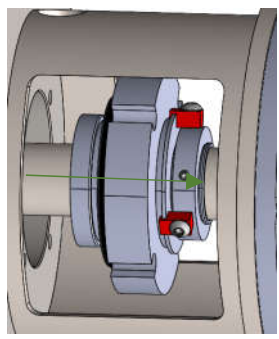
1.) ENSURE THAT THE IN TANK SHUT OFF IS ENGAGED BY FOLLOWING THE INSTRUCTIONS IN THE “ENGAGING THE IN TANK SHUT-OFF (ITSO)” TS OR ENSURE THAT THE TANK IS EMPTY AND DE-PRESSURIZED.



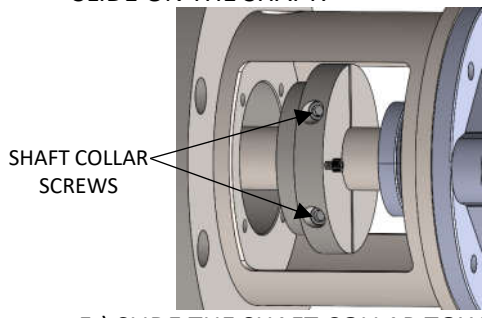
2.) WITH THE ITSO NOW ENGAGED, SEAL CLIPS INSTALLED, AND SEAL SET SCREWS LOOSENED; REMOVE ANY PIPING FROM THE SEAL THAT MAY PREVENT THE SEAL FROM MOVING. ALSO REMOVE THE SEAL BOLTS.



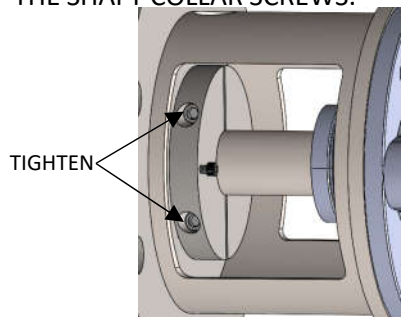
3.) SLIDE THE SEAL TOWARDS THE GEARBOX.



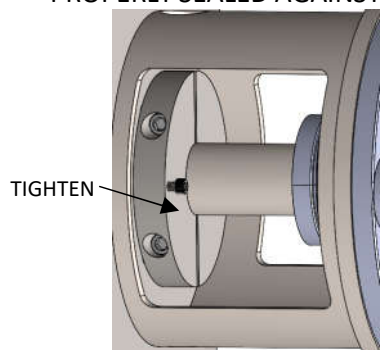
4.) INSTALL THE SHAFT COLLAR, ORIENTATED AS SHOWN. THE TWO SHAFT COLLAR SCREWS WILL HAVE TO BE REMOVED COMPLETELY SO THE TWO SHAFT COLLAR HALVES CAN BE PLACED AROUND THE SHAFT. REINSTALL THE TWO SHAFT COLLAR SCREWS, LEAVE THEM LOOSE SO THE SHAFT COLLAR CAN STILL SLIDE ON THE SHAFT.



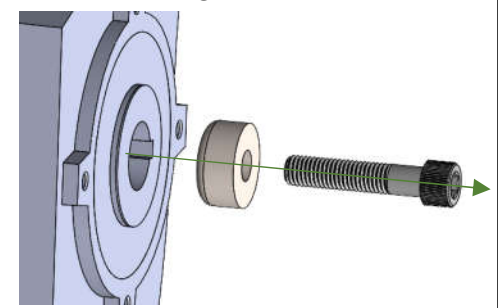
5.) SLIDE THE SHAFT COLLAR TOWARDS THE TANK. THE SMALLER OUTER DIAMETER OF THE SHAFT COLLAR SHOULD SLIDE INTO THE PEDESTAL BORE. ONCE IN THE PEDESTAL BORE. TIGHTEN THE SHAFT COLLAR SCREWS.



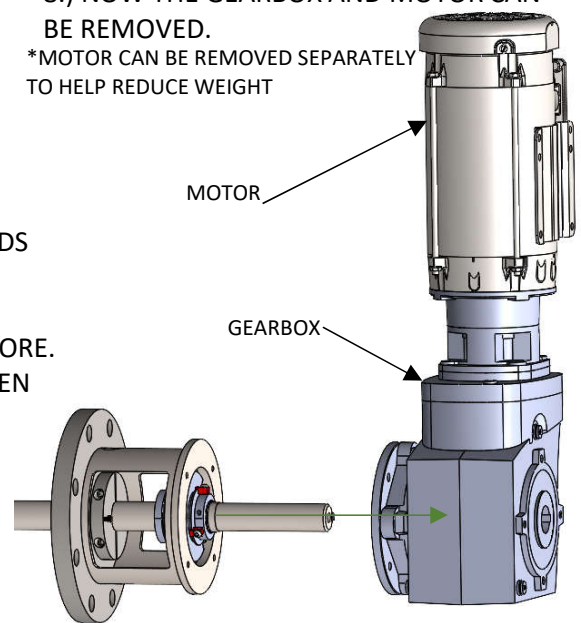
6.) TIGHTEN THE JACKING SCREWS EVENLY. THIS WILL KEEP THE ITSO PROPERLY SEALED AGAINST THE ANSI.



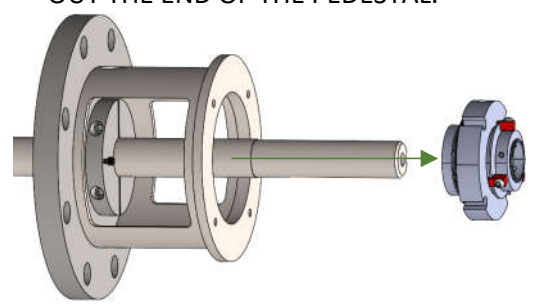
7.) REMOVE THE FIXING ELEMENT BOLT AND THE FIXING ELEMENT.



8.) NOW THE GEARBOX AND MOTOR CAN BE REMOVED. *MOTOR CAN BE REMOVED SEPARATELY TO HELP REDUCE WEIGHT



9.) REMOVE THE KEY IN THE SHAFTS KEYWAY. SLIDE THE SEAL ON THE SHAFT OUT THE END OF THE PEDESTAL.

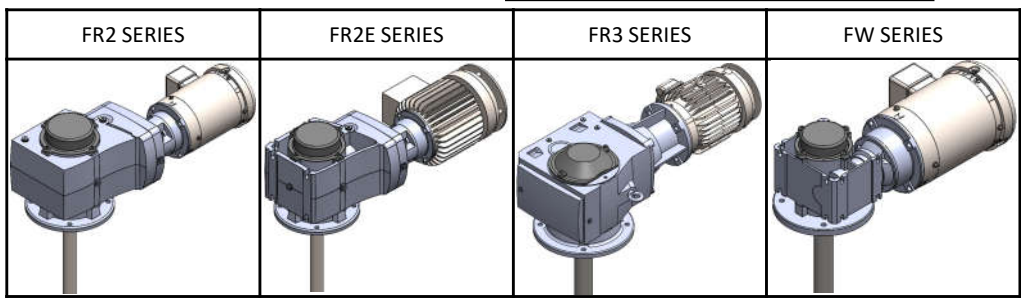


CAUTION
DISCONNECT MIXER FROM POWER SOURCE BEFORE ASSEMBLING, LIFTING, MOVING, OR SERVICING MIXER.

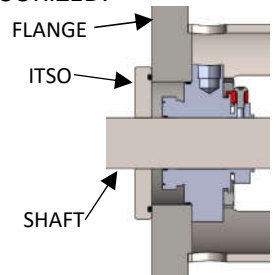
RT153 SEAL REMOVAL – BOLTED PEDESTAL



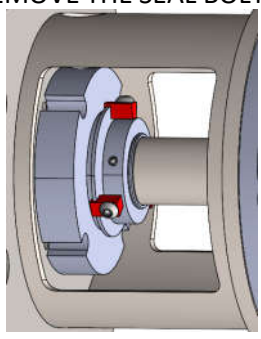
COMPLETE TS-105 (ENGAGING THE IN TANK SHUT-OFF) PRIOR TO USING THIS TS



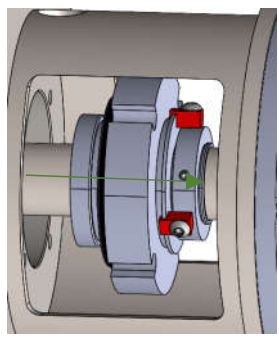
1.) ENSURE THAT THE IN TANK SHUT OFF IS ENGAGED BY FOLLOWING THE INSTRUCTIONS IN THE “ENGAGING THE IN TANK SHUT-OFF (ITSO)” TS OR ENSURE THAT THE TANK IS EMPTY AND DE-PRESSURIZED.



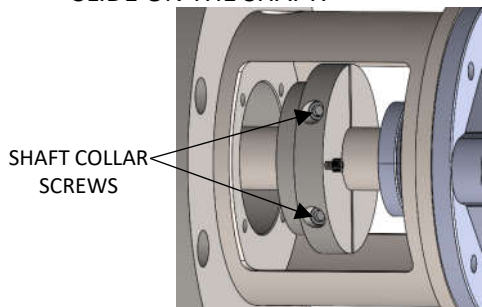
2.) WITH THE ITSO NOW ENGAGED, SEAL CLIPS INSTALLED, AND SEAL SET SCREWS LOOSENED; REMOVE ANY PIPING FROM THE SEAL THAT MAY PREVENT THE SEAL FROM MOVING. ALSO REMOVE THE SEAL BOLTS.



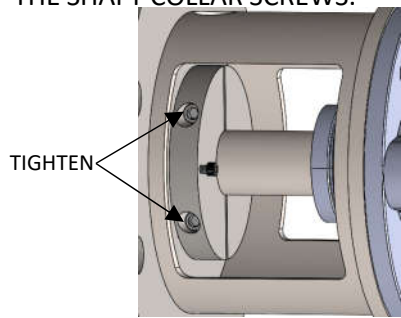
3.) SLIDE THE SEAL TOWARDS THE GEARBOX.



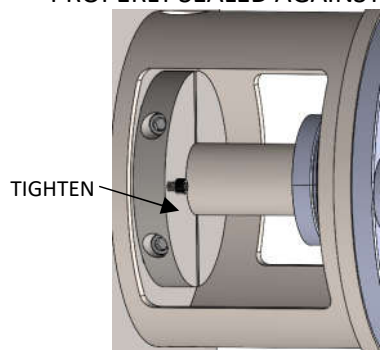
4.) INSTALL THE SHAFT COLLAR, ORIENTATED AS SHOWN. THE TWO SHAFT COLLAR SCREWS WILL HAVE TO BE REMOVED COMPLETELY SO THE TWO SHAFT COLLAR HALVES CAN BE PLACED AROUND THE SHAFT. REINSTALL THE TWO SHAFT COLLAR SCREWS, LEAVE THEM LOOSE SO THE SHAFT COLLAR CAN STILL SLIDE ON THE SHAFT.



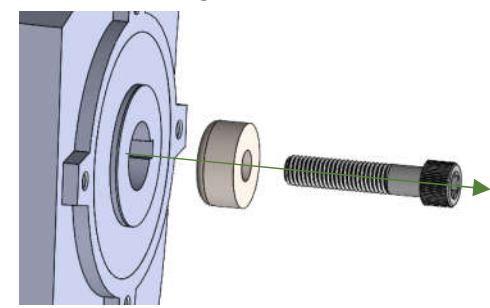
5.) SLIDE THE SHAFT COLLAR TOWARDS THE TANK. THE SMALLER OUTER DIAMETER OF THE SHAFT COLLAR SHOULD SLIDE INTO THE FLANGE BORE. ONCE IN THE FLANGE BORE. TIGHTEN THE SHAFT COLLAR SCREWS.



6.) TIGHTEN THE JACKING SCREWS EVENLY. THIS WILL KEEP THE ITSO PROPERLY SEALED AGAINST THE ANSI.

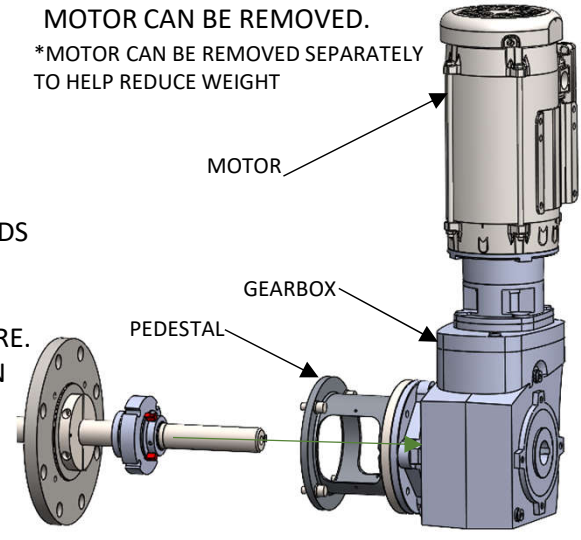


7.) REMOVE THE FIXING ELEMENT BOLT AND THE FIXING ELEMENT.

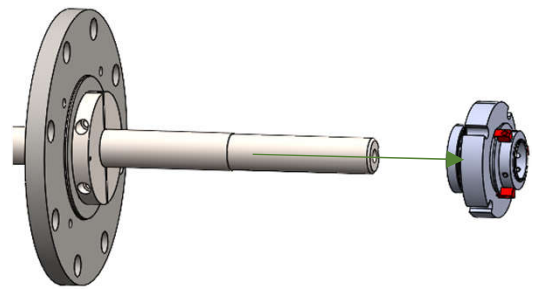


8.) NOW THE PEDESTAL, GEARBOX, AND MOTOR CAN BE REMOVED.

*MOTOR CAN BE REMOVED SEPARATELY TO HELP REDUCE WEIGHT



9.) REMOVE THE KEY IN THE SHAFTS KEYWAY. SLIDE THE SEAL ON THE SHAFT OUT THE END OF THE PEDESTAL.



CAUTION
 DISCONNECT MIXER FROM POWER SOURCE BEFORE ASSEMBLING, LIFTING, MOVING, OR SERVICING MIXER.