

QUICK START GUIDE (QSG)

SERIES: PRO XL

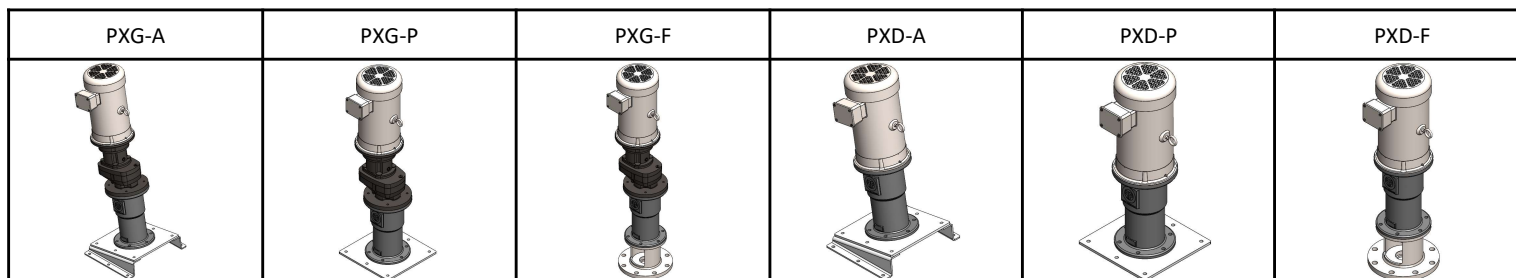
HOLLOW BORE SHAFT INSTALLATION

PHONE: 877.812.7573

E-MAIL: INFO@FUSIONFLUID.COM

WEBSITE: FUSIONFLUID.COM

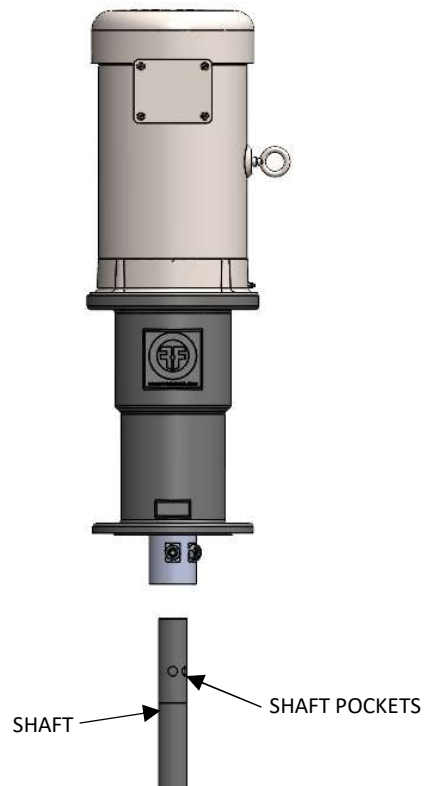
LINK TO HOW TO VIDEOS



1.) LOOSEN THE THREE JAM NUTS ON THE SET SCREWS. LOOSEN THE THREE SET SCREWS, SO THE SET SCREWS ARE CLEAR OF THE BORE.



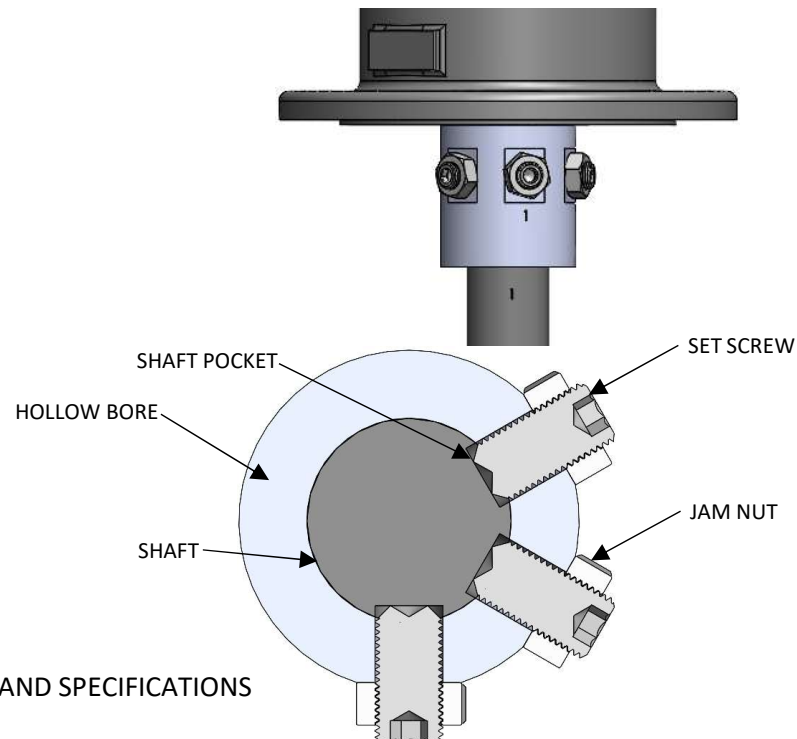
2.) ALIGN THE SHAFT POCKETS WITH THE SET SCREW HOLES IN THE HOLLOW BORE.



3.) INSERT THE SHAFT INTO THE HOLLOW BORE UNTIL IT BOTTOMS OUT. THE SHAFT POCKETS SHOULD ALIGN WITH THE SET SCREWS IN THE HOLLOW BORE.



4.) TIGHTEN THE FIRST SET SCREW UNTIL IT INITIALLY TOUCHES THE SHAFT. NOW, ROTATE THE SHAFT BACK AND FORTH WHILE TIGHTENING THE SCREW TO MAKE SURE IT'S ON THE DEEPEST PART OF THE SHAFT POCKET. NOW TIGHTEN THE OTHER SET SCREW(S) AND TIGHTEN SET TO 53 FT-LB. TIGHTEN THE JAM NUTS TO 26 FT-LB.



CAUTION

DISCONNECT MIXER FROM POWER SOURCE BEFORE ASSEMBLING, LIFTING, MOVING, OR SERVICING MIXER.

CAUTION:

- THE VISCOSITY AND SPECIFIC GRAVITY OF THE FLUID AFFECTS MIXER SIZING AND SPECIFICATIONS
- DO NOT LAY MIXER ON THE SHAFT