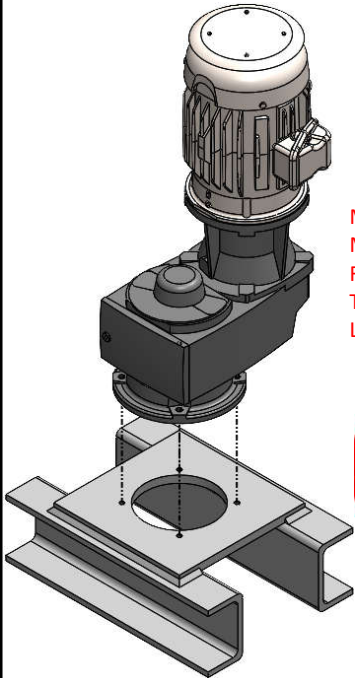
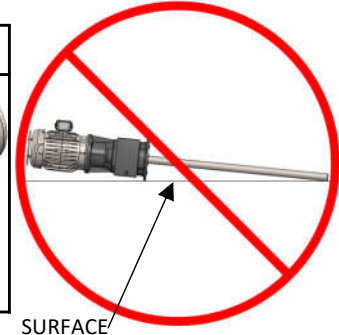
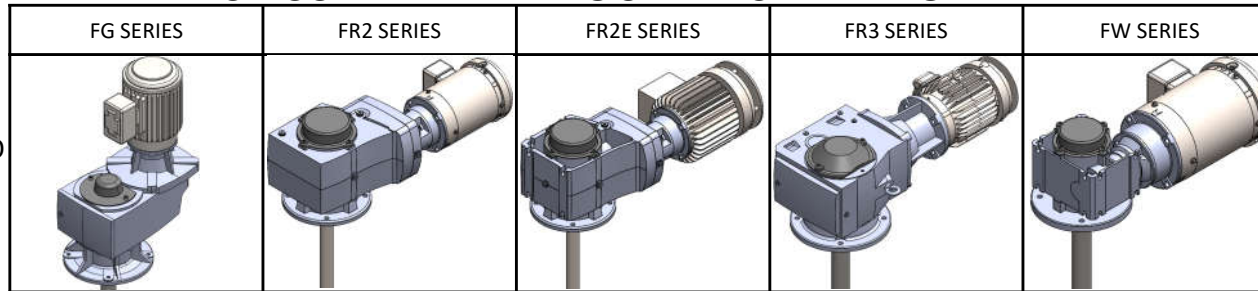


QSG-132-A

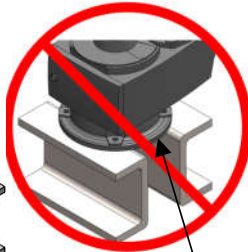
### CIRCULAR PLATE MOUNT INSTALLATION

DO NOT LAY MIXER ON SHAFT

1.) MAKE SURE THE MIXER MOUNTING LOCATION WILL SUPPORT THE MIXER DURING OPERATION. IT'S RECOMMENDED TO MOUNT THE MIXER WITHOUT THE SHAFT TO AVOID DAMAGE TO THE SHAFT, IMPELLER, OR TANK.



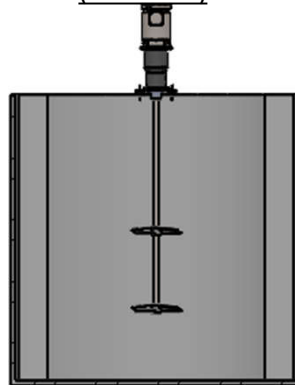
MIXER'S CIRCULAR MOUNT NEEDS TO BE FULLY SUPPORTED BY THE MOUNTING LOCATION.



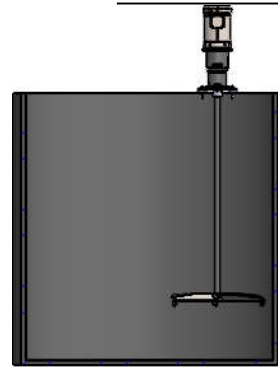
NOT SUPPORTED

2.) IN GENERAL, FOLLOW THE GUIDELINES IN THE TWO IMAGES BELOW FOR WHERE TO MOUNT THE MIXER IN RELATION TO YOUR TANK. ALLOW FOR CLEARANCE BETWEEN THE IMPELLER(S) AND THE NEAREST OBSTRUCTION ONCE THE SHAFT AND IMPELLER(S) ARE INSTALLED. FOR SITUATIONS NOT SHOWN, CONTACT FUSION FOR MOUNTING GUIDELINES.

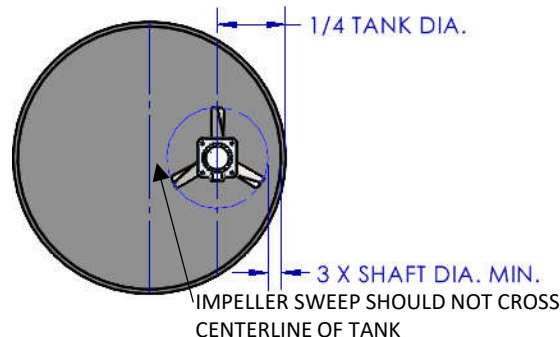
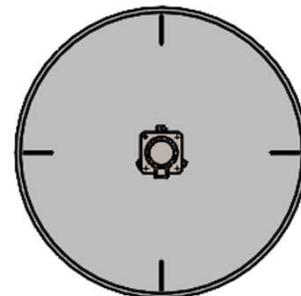
CENTER MOUNT WITH BAFFLES  
(OPTIMAL)



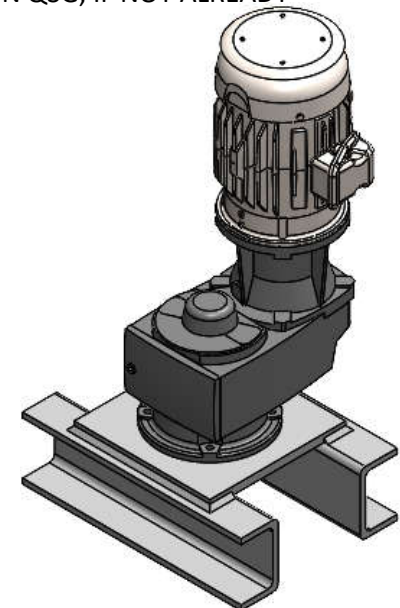
OFF-CENTER MOUNT WITHOUT BAFFLES



\*THE MIXER SUPPORT NEEDS TO BE RIGID AND CAPABLE OF SUPPORTING THE MIXERS WEIGHT, TORQUE, AND BENDING MOMENT. IF THE MIXER SUPPORT IS NOT RIGID, UNDESIREABLE MOVEMENT WILL OCCUR AND DAMAGE TO THE MIXER AND TANK IS LIKELY.\*



3.) PLACE THE MIXER IN THE DESIRED LOCATION. SECURE IT WITH APPROPRIATE HARDWARE AND USE A LOOSENING PREVENTION DEVICE (NYLON INSERT LOCKNUT, SERVICE REMOVABLE THREAD LOCKER, LOCK WASHER, ETC.). ENSURE THE MIXER IS APPROPRIATELY TIGHTENED TO THE MOUNTING SURFACE TO PROHIBIT MOVEMENT. ONCE MOUNTED, INSTALL THE SHAFT AND IMPELLER(S) PER THE IMPELLER INSTALLATION QSG AND APPROPRIATE SHAFT INSTALLATION QSG, IF NOT ALREADY INSTALLED.



### CAUTION

DISCONNECT MIXER FROM POWER SOURCE BEFORE LIFTING OR MOVING MIXER

CAUTION:

- THE VISCOSITY AND SPECIFIC GRAVITY OF THE FLUID AFFECTS MIXER SIZING AND SPECIFICATIONS