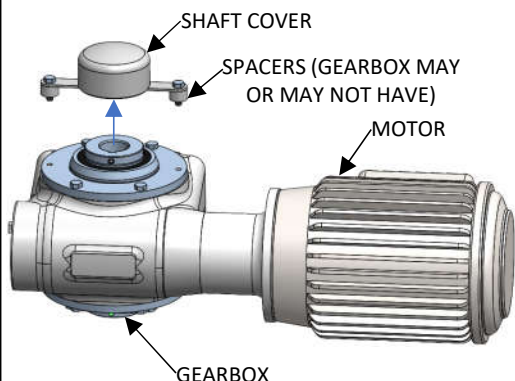
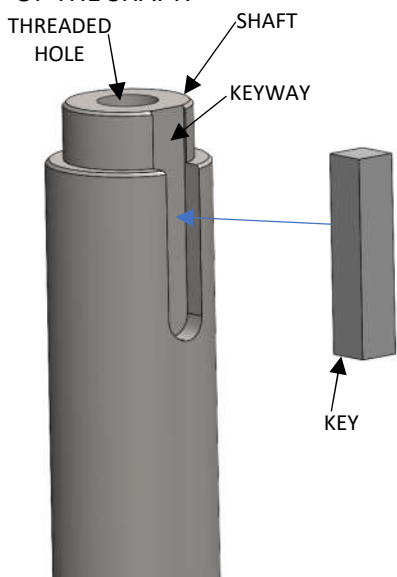


SHAFT INSTALLATION – FCWS WITHOUT SHAFT SHOULDER

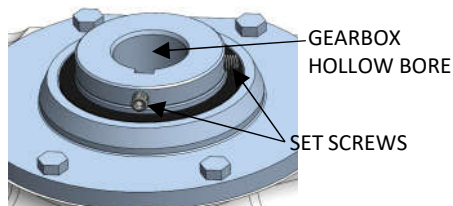
1.) REMOVE THE GEARBOX'S SHAFT COVER BY REMOVING THE BOLTS THAT HOLD IT DOWN. KEEP THE SHAFT COVER AND BOLTS.



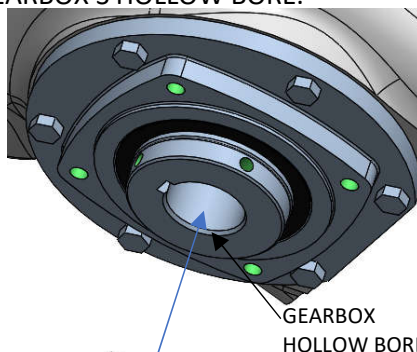
2.) INSERT THE KEY INTO THE KEYWAY OF THE SHAFT.



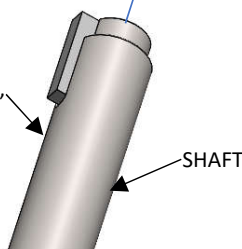
3.) ENSURE THE SET SCREWS ARE BACKED UP AND CLEAR OF THE BORE TO ALLOW FOR THE SHAFT AND KEY TO INSERT.



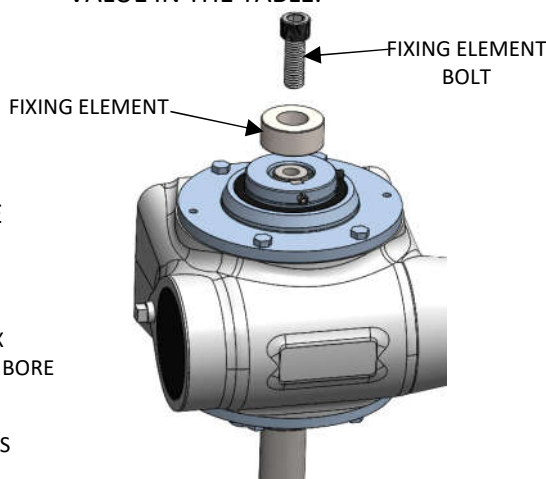
4.) DEBURR, CLEAN, THEN LIGHTLY LUBRICATE THE SECTION OF THE SHAFT THAT WILL GO IN THE GEARBOX. INSERT THE SHAFT AND KEY INTO THE GEARBOX'S HOLLOW BORE. ENSURE THAT THE KEY IN THE SHAFT IS ALIGNED WITH THE KEYWAY IN THE GEARBOX'S HOLLOW BORE.



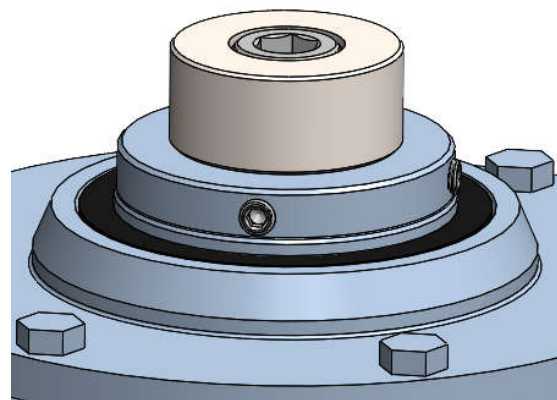
DEBURR, CLEAN, & LUBE



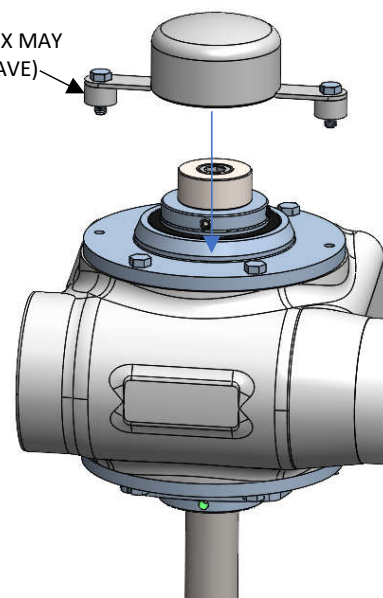
5.) ATTACH THE SHAFT TO THE GEARBOX USING THE FIXING ELEMENT AND FIXING ELEMENT BOLT (BOTH PROVIDED). TIGHTEN THE FIXING ELEMENT BOLT TO THE APPROPRIATE VALUE IN THE TABLE.



6.) TIGHTEN THE SET SCREWS TO THE APPROPRIATE 5/16-24 TORQUE VALUE. **(FAILURE TO DO SO COULD CAUSE THE SHAFT TO CLIMB UP OUT OF THE TANK)**



7.) INSTALL SHAFT COVER AND BOLTS BACK ONTO THE GEARBOX.



| BOLT SIZE | 18-8 & 304 STAINLESS | 316 STAINLESS |
|-----------|----------------------|---------------|
| 5/16-24 | 71 in-lb. | 74 in-lb. |
| 3/8-16 | 96 in-lb. | 102 in-lb. |
| 7/16-14 | 13 ft-lb. | 14 ft-lb. |
| 5/8-11 | 41 ft-lb. | 42 ft-lb. |

CAUTION

DISCONNECT MIXER FROM POWER SOURCE BEFORE ASSEMBLING, LIFTING, MOVING, OR SERVICING MIXER.

CAUTION:

- THE VISCOSITY AND SPECIFIC GRAVITY OF THE FLUID AFFECTS MIXER SIZING AND SPECIFICATIONS