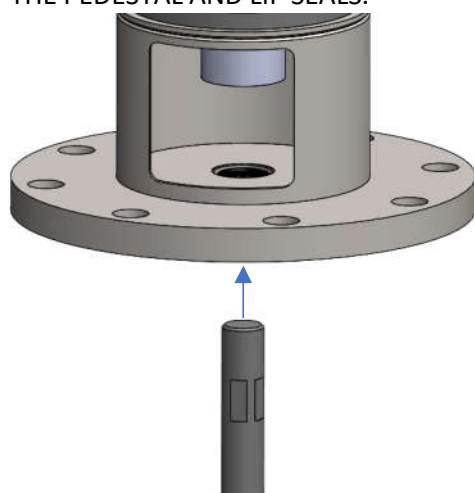


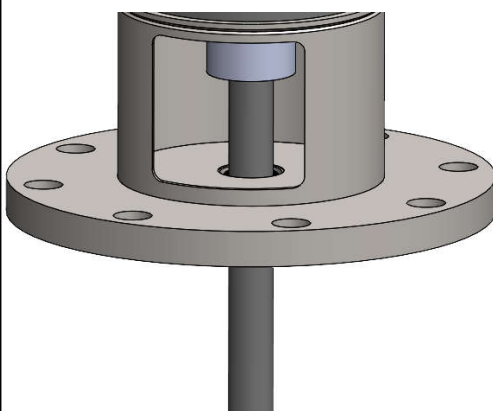
VITON LIP SEAL INSTRUCTIONS

SHAFT INSTALLATION

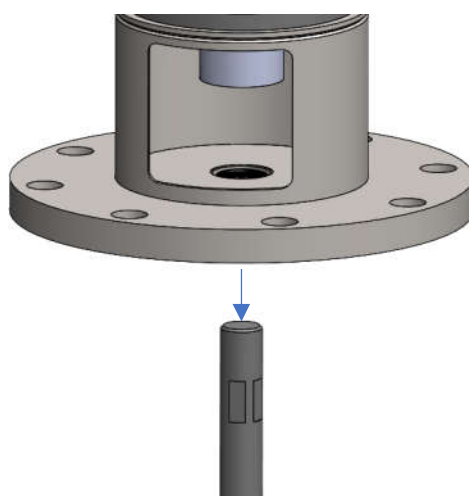
1.) THE LIP SEAL(S) COME INSTALLED IN THE MIXER'S PEDESTAL. SLIDE THE SHAFT UP THROUGH THE BOTTOM OF THE PEDESTAL AND LIP SEALS.



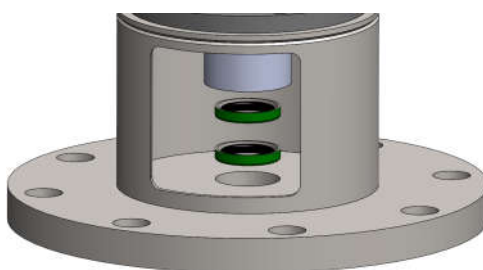
2.) ATTACH THE SHAFT TO THE MIXER DRIVE FOLLOWING THE APPROPRIATE SHAFT INSTALLATION QSG. THEN INSTALL THE IMPELLER FOLLOWING THE IMPELLER INSTALLATION QSG.



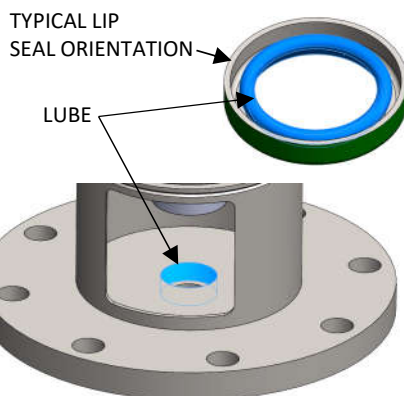
A.) DETACH THE SHAFT FROM THE MIXER DRIVE AND LOWER IT THROUGH THE LIP SEAL AND PEDESTAL BORE.



B.) REMOVE THE LIP SEAL(S) FROM THE PEDESTAL BORE BY EITHER TAPPING THEM OUT FROM THE BOTTOM OF THE PEDESTAL OR PRY THEM OUT FROM THE PEDESTAL WINDOW.

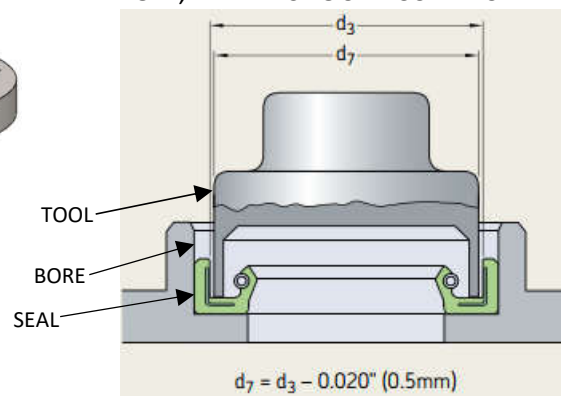


C.) APPLY A LIGHT COAT OF PROCESS COMPATIBLE LUBRICANT TO THE SEAL(S) AND THE PEDESTAL BORE.

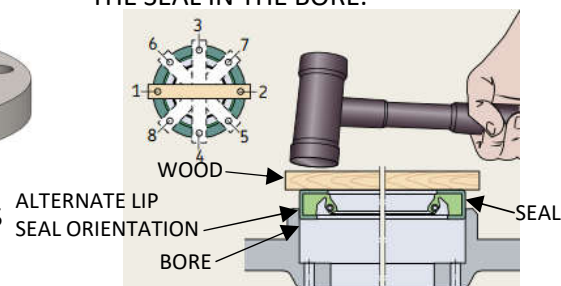


LIP SEAL REPLACEMENT

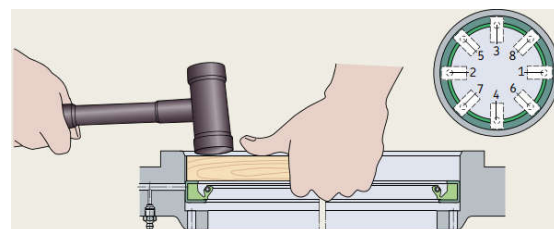
D.) PRESS THE SEAL IN BY USING A TOOL LIKE THE ONE SHOWN BELOW AND A DEAD BLOW HAMMER. MAKE SURE THE SEAL IS GOING INTO THE BORE SQUARE. NOTE THE ORIENTATION SHOWN BELOW, THE LIP SHOULD CURVE UP.



E.) IF YOU ARE UNABLE TO GET OR MAKE A TOOL LIKE THE ONE ABOVE, USE A WOODEN BLOCK THAT'S LONG ENOUGH TO SPAN THE SEAL'S OUTSIDE DIAMETER AND A DEAD BLOW HAMMER. MAKE SURE TO TAP THE SEAL INTO THE BORE FOLLOWING THE PATTERN IN THE IMAGE TO AVOID TILTING OR SKEWING THE SEAL IN THE BORE.



F.) USE A SHORTER PIECE OF WOOD AND THIS PATTERN TO DRIVE THE SEAL FULLY INTO THE BORE.



G.) RE-INSTALL THE SHAFT FOLLOWING THE SHAFT INSTALLATION INSTRUCTIONS TO THE LEFT.

CAUTION

DISCONNECT MIXER FROM POWER SOURCE BEFORE ASSEMBLING, LIFTING, MOVING, OR SERVICING MIXER.

CAUTION:

- THE VISCOSITY AND SPECIFIC GRAVITY OF THE FLUID AFFECTS MIXER SIZING AND SPECIFICATIONS