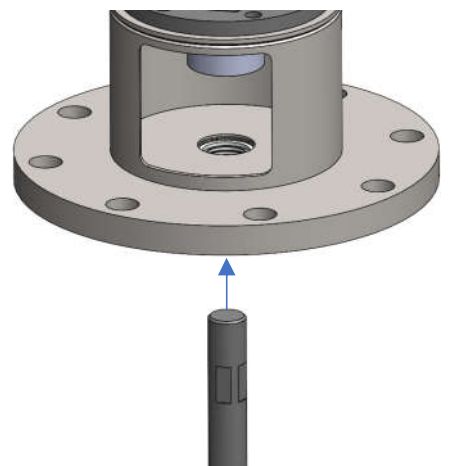


QSG-123-A

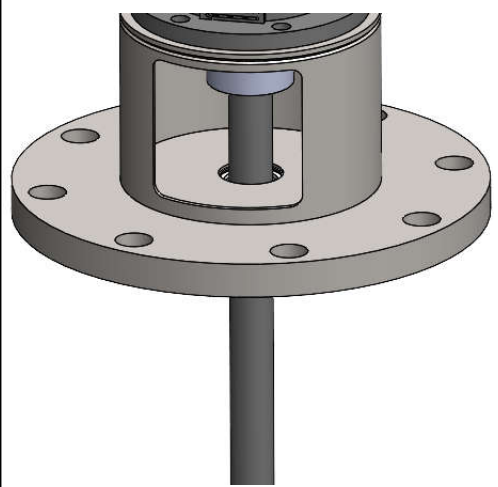
**FDA LIP SEAL INSTRUCTIONS**

**SHAFT  
INSTALLATION**

1.) THE LIP SEAL(S) COME INSTALLED IN THE MIXER'S PEDESTAL. SLIDE THE SHAFT UP THROUGH THE BOTTOM OF THE PEDESTAL AND LIP SEAL(S).

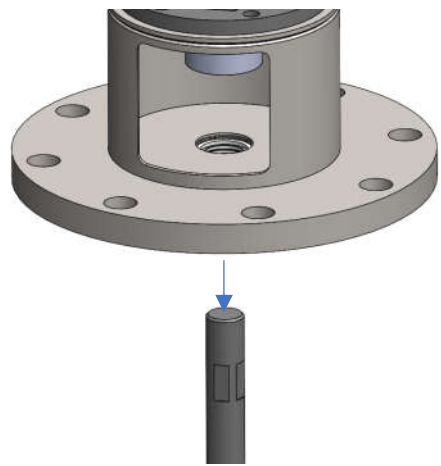


2.) ATTACH THE SHAFT TO THE MIXER DRIVE FOLLOWING THE APPROPRIATE SHAFT INSTALLATION QSG. THEN INSTALL THE IMPELLER FOLLOWING THE IMPELLER INSTALLATION QSG.

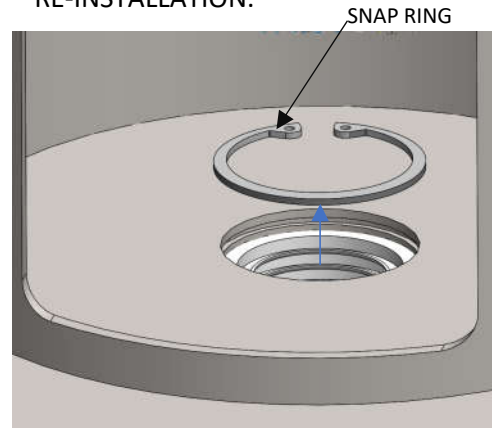


**LIP SEAL  
REPLACEMENT**

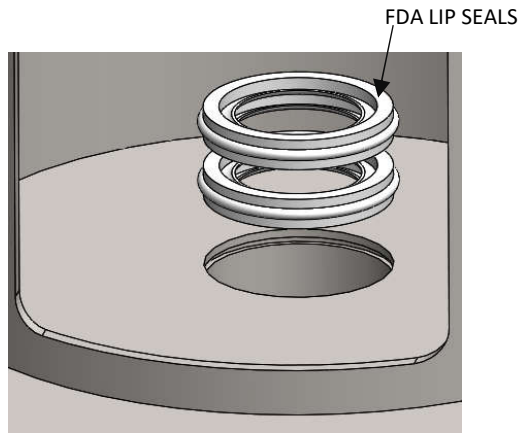
A.) DETACH SHAFT FROM MIXER DRIVE AND LOWER IT THROUGH THE LIP SEAL AND PEDESTAL BORE.



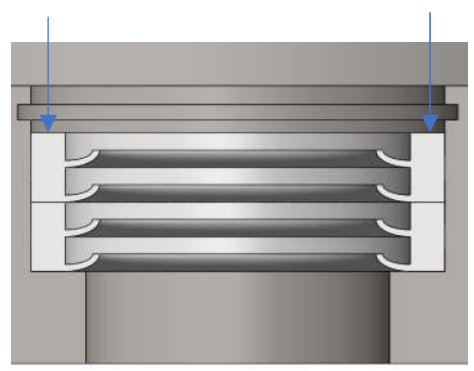
B.) USING SNAP RING PLIERS, REMOVE THE SNAP RING FROM THE GROOVE IN THE PEDESTAL. KEEP FOR RE-INSTALLATION.



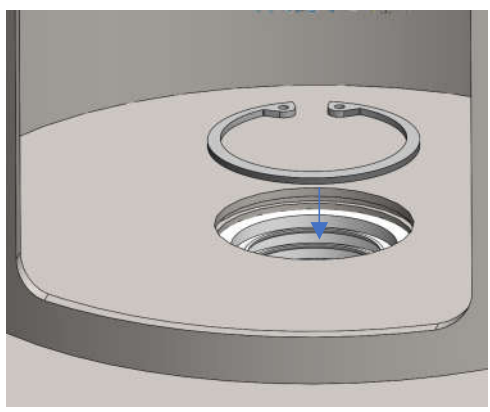
C.) REMOVE THE LIP SEAL(S) FROM THE PEDESTAL BORE.



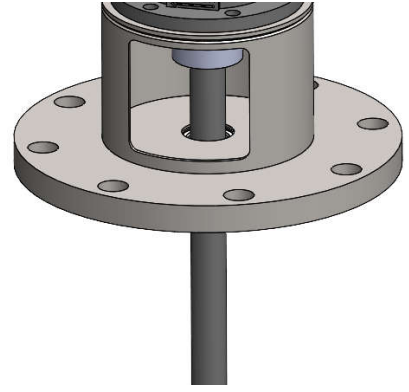
D.) PRESS THE NEW LIP SEAL(S) INTO THE PEDESTAL BORE. NOTE THE ORIENTATION SHOWN BELOW, THE LIP SHOULD CURVE UP.



E.) RE-INSTALL THE SNAP RING WITH SNAP RING PLIERS, MAKING SURE IT'S FULLY SEATED IN THE SNAP RING GROOVE.



F.) RE-INSTALL THE SHAFT FOLLOWING THE SHAFT INSTALLATION INSTRUCTIONS TO THE LEFT.



**CAUTION**  
DISCONNECT MIXER FROM POWER SOURCE BEFORE ASSEMBLING, LIFTING, MOVING, OR SERVICING MIXER.

**CAUTION:**

- THE VISCOSITY AND SPECIFIC GRAVITY OF THE FLUID AFFECTS MIXER SIZING AND SPECIFICATIONS