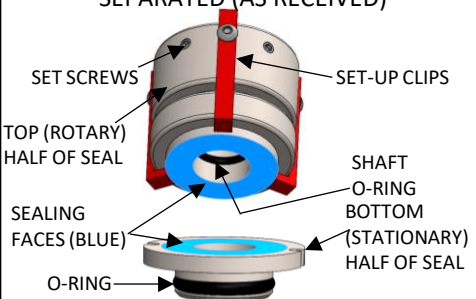


QSG-121-C – 2/17/25

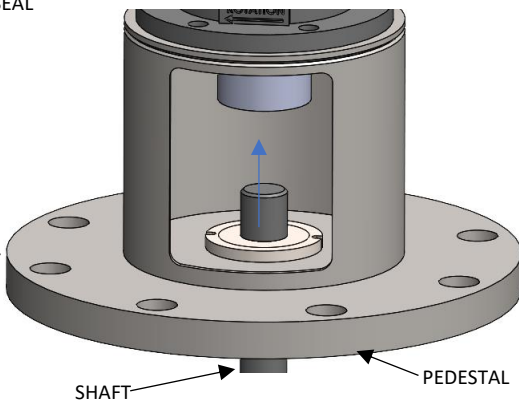
### BDRA SEAL INSTALLATION

BDRA SEAL IS SHOWN SEPARATED (AS RECEIVED)

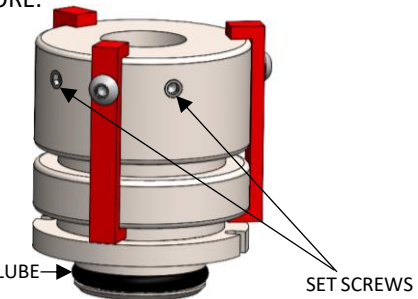
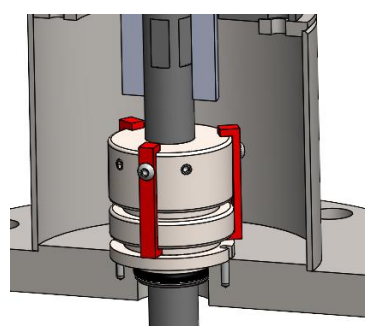

**CAUTION:**

- CLEAN SEAL FACES WITH AN ISOPROPYL WIPE OR CLEAN LINT FREE CLOTH
- DO NOT TOUCH SEAL FACES WITH BARE HANDS OR DIRTY GLOVED HANDS

1.) APPLY PROCESS COMPATIBLE LUBRICANT TO THE O-RING ON THE BOTTOM HALF OF THE SEAL AND THE O-RING IN THE TOP HALF OF THE SEAL, BEING CAREFUL NOT TO ALLOW ANY TO MAKE CONTACT WITH THE SEALS MATING SURFACES. BACK OFF THE SET SCREW(S) SO THEY ARE CLEAR OF THE BORE.



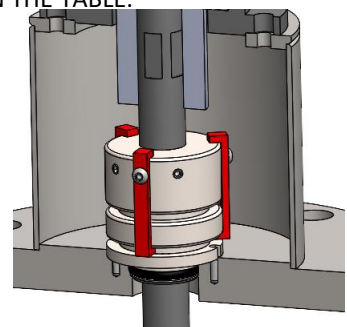
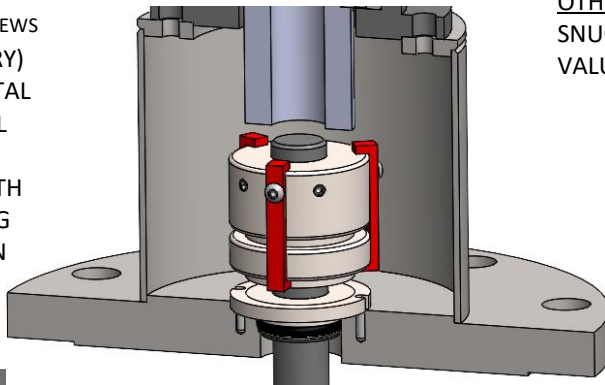
5.) ATTACH THE SHAFT TO THE MIXER DRIVE ACCORDING TO THE APPROPRIATE SHAFT INSTALLATION QSG. ENSURE THE SEAL FACES ARE STILL CLEAN. SLIDE THE TOP (ROTARY) HALF DOWN TO THE BOTTOM (STATIONARY) HALF OF THE SEAL. ENSURE THE ROTARY & STATIONARY SEAL FACES ARE IN CONTACT.



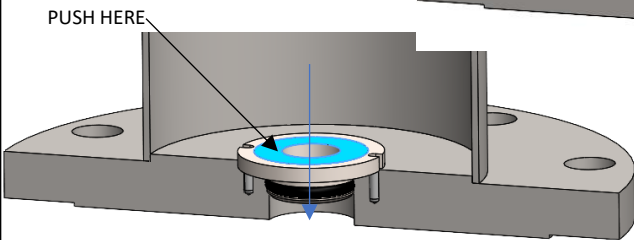
4.) INSERT THE TOP (ROTARY) HALF OF THE SEAL ONTO THE SHAFT. LEAVE IT "FLOATING" ON THE SHAFT. DO NOT SLIDE IT DOWN SO THE MATING FACES ARE TOUCHING YET.

6.) THREAD IN THE SEALS SET SCREW(S) IN AN ALTERNATING PATTERN UNTIL THEY ARE BARELY TOUCHING THE SHAFT. DO NOT TIGHTEN ONE FULLY THEN THE OTHER. ONCE ALL SET SCREW(S) ARE SNUG, TORQUE TO THE APPROPRIATE VALUE IN THE TABLE.

2.) PLACE THE BOTTOM (STATIONARY) HALF OF THE SEAL INTO THE PEDESTAL BORE. ALIGN THE SLOTS IN THE SEAL WITH THE PINS IN THE PEDESTAL. PRESS THE SEAL INTO THE BORE WITH A **CLEAN GLOVED HAND** BY PUTTING PRESSURE ON THE SURFACE SHOWN IN BLUE, CLOSEST TO THE BORE, OTHERWISE DAMAGE MAY OCCUR.



7.) REMOVE THE SET-UP CLIPS AND RETAIN FOR FUTURE USE. THEY WILL BE NEEDED IN THE FUTURE WHEN THE SEAL IS REMOVED.



**\*REMOVE SET-UP CLIPS BEFORE OPERATING MIXER\***

THREAD	18-8 STAINLESS
1/4"-28	72 in-lb.
5/16"-24	147 in-lb.
3/8"-24	22 ft-lb.

**CAUTION**  
 DISCONNECT MIXER FROM POWER SOURCE BEFORE ASSEMBLING, LIFTING, MOVING, OR SERVICING MIXER.

**CAUTION:**

- THE VISCOSITY AND SPECIFIC GRAVITY OF THE FLUID AFFECTS MIXER SIZING AND SPECIFICATIONS

