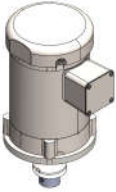

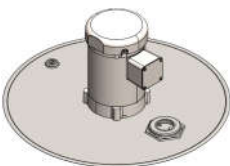

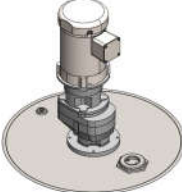



QUICK START GUIDE (QSG)

SERIES: BULK DRUM SHAFT INSTALLATION

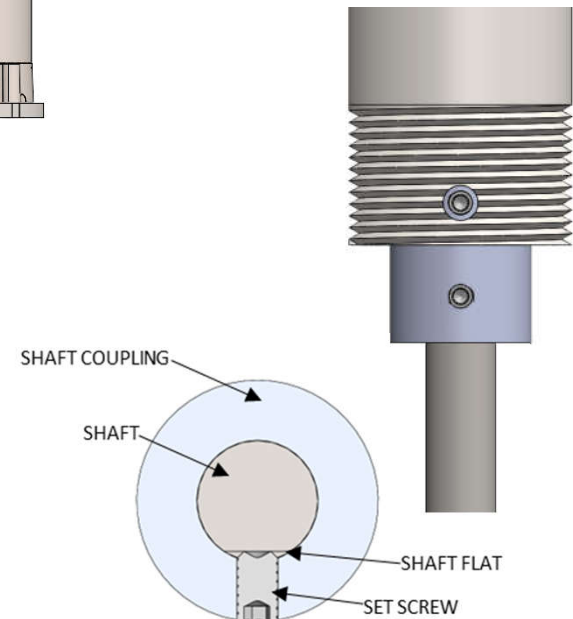
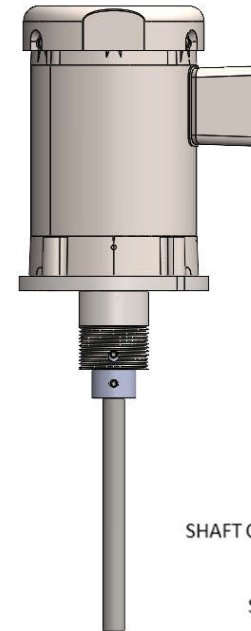
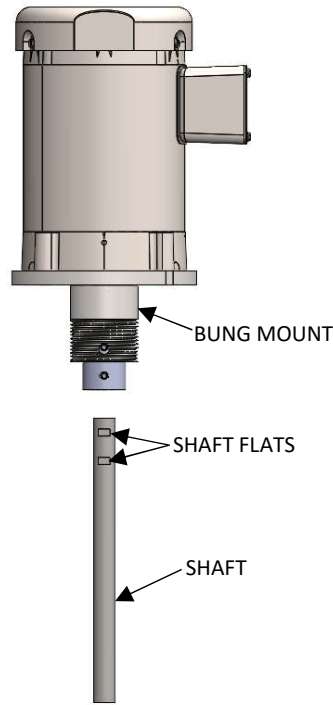
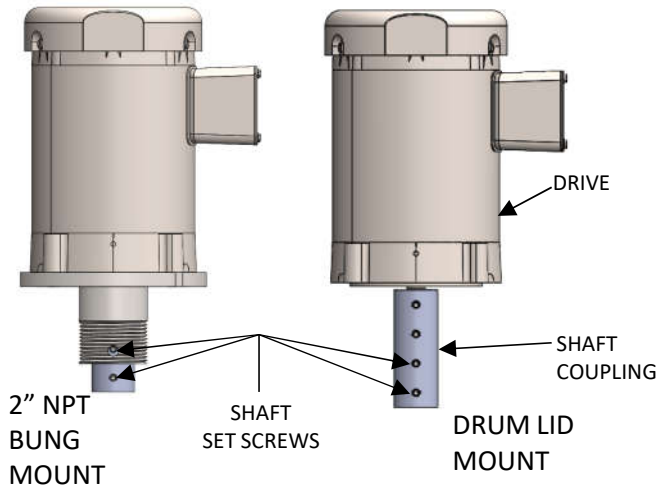
| 2" NPT BUNG MOUNT HIGH SPEED LOW TORQUE ELECTRIC DRIVE | 2" NPT BUNG MOUNT HIGH SPEED LOW TORQUE AIR DRIVE | DRUM LID MOUNT HIGH SPEED LOW TORQUE ELECTRIC DRIVE | DRUM LID MOUNT HIGH SPEED LOW TORQUE AIR DRIVE | DRUM LID MOUNT LOW SPEED HIGH TORQUE ELECTRIC DRIVE | DRUM LID MOUNT LOW SPEED HIGH TORQUE AIR DRIVE |
|---|---|--|---|---|---|
|  |  |  |  |  |  |

1.) LOOSEN THE BOTTOM TWO SET SCREWS, WITH A 5/32 ALLEN, ON THE SHAFT COUPLING. (FOR BUNG AND TOTE CAP MOUNTS ROTATE THE SHAFT COUPLING SO THE TOP SET SCREW IS ALIGNED WITH THE HOLE IN THE BUNG TO REMOVE THE TOP SCREW).

2.) ALIGN THE FLATS ON THE SHAFT WITH THE SET SCREW HOLES IN THE SHAFT COUPLING.

3.) INSERT SHAFT INTO SHAFT COUPLING, FLATS ON SHAFT SHOULD ALIGN WITH HOLES IN SHAFT COUPLING.

4.) WITH A 5/32 ALLEN, TIGHTEN THE FIRST SCREW UNTIL IT INITIALLY TOUCHES THE SHAFT. NOW, ROTATE THE SHAFT BACK AND FORTH WHILE TIGHTENING THE SCREW TO MAKE SURE IT'S ON THE DEEPEST PART OF THE FLAT. NOW TIGHTEN THE BOTTOM SET SCREW AND TIGHTEN BOTH SET SCREWS TO 103 IN-LB.



CAUTION

DISCONNECT MIXER FROM POWER SOURCE BEFORE ASSEMBLING, LIFTING, MOVING, OR SERVICING MIXER.

CAUTION:

- THE VISCOSITY AND SPECIFIC GRAVITY OF THE FLUID AFFECTS MIXER SIZING AND SPECIFICATIONS
- DO NOT LAY MIXER ON THE SHAFT