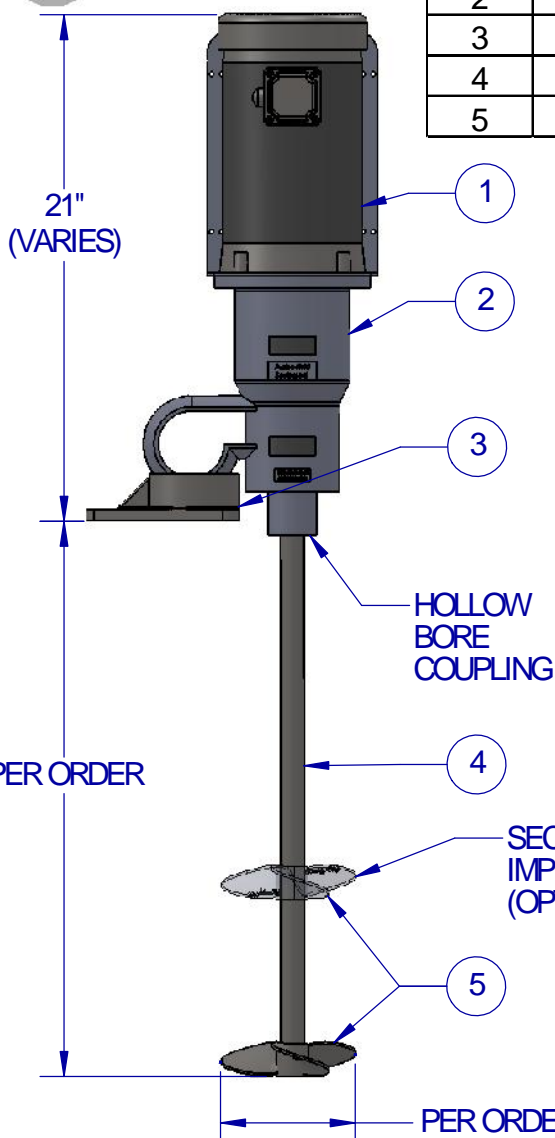
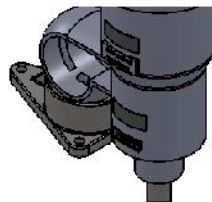




ITEM	QTY	DESCRIPTION
1	1	MOTOR - 1750 RPM MAX, INDUSTRIAL DUTY, HP PER ORDER, PAINTED FINISH
2	1	BEARING HOUSING - ALUMINUM, WITH HOLLOW BORE COUPLING, PAINTED FINISH
3	1	STAINLESS CUP PLATE MOUNT - BALL AND SOCKET TYPE
4	1	316 STAINLESS STEEL SHAFT PER ORDER
5	1+	316 STAINLESS STEEL MARINE-TYPE IMPELLER, SIZE AND QTY PER ORDER



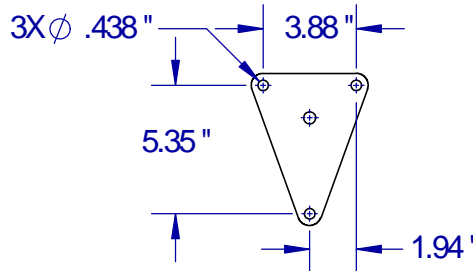
BALL & SOCKET DETAIL



VFD MOUNT DETAIL



CUP PLATE MOUNTING DETAIL



STANDARD FEATURES

- CAST ALUMINUM HOUSING
- DUAL ABEC-RATED BEARINGS
- STAINLESS CUP PLATE MOUNT
- STAINLESS ARBOR
- STAINLESS FASTENERS
- ANALOG SPEED CONTROL (VFD)

AVAILABLE UPGRADES

- ALL STAINLESS MIXER W/CAST STAINLESS HOUSING
- SPECIAL ALLOYS
- SANITARY FINISHES
- SHAFT COATINGS
- THREADED SANITARY COUPLINGS
- RIGID COUPLINGS
- VARIOUS IMPELLER SIZES, STYLES, AND QTY
- DIGITAL TACHOMETER
- DIGITAL SPEED CONTROL (VFD)

ANALOG VFD (STANDARD)

DIGITAL VFD (UPGRADE)



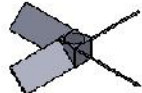
NOTE: ALL STAINLESS UPGRADE INCLUDES STAINLESS MOTOR, STAINLESS HARDWARE, STAINLESS BEARING HOUSING (WITH VITON O-RING UPPER SEAL AND VITON LIP SEAL LOWER SEAL)

EST WT. 68-89 LBS (DEPENDING ON HP AND OPTIONS)

TYPICAL IMPELLER OPTIONS



MARINE PROP



PBT-PITCH BLADE TURBINE



PF3 HYDROFOIL



BIOPROP



RUSHTON



COWF'S (SAWTOOTH)



FOLDING PROP

	NAME	DATE
DRAWN	JDF	12/4/13
CHECKED	PIC	12/4/13

PROPRIETARY AND CONFIDENTIAL

THE INFORMATION CONTAINED IN THIS DRAWING IS THE SOLE PROPERTY OF FUSION FLUID EQUIPMENT LLC. ANY REPRODUCTION IN PART OR AS A WHOLE WITHOUT THE WRITTEN PERMISSION OF FUSION FLUID EQUIPMENT LLC IS PROHIBITED.

UNLESS OTHERWISE SPECIFIED: DIMENSIONS ARE IN INCHES. NO TOLERANCE IS IMPLIED. DO NOT SCALE DRAWING



TITLE: FUSION PRO PD-U CUP PLATE MOUNT MIXER DIRECT DRIVE ELECTRIC WITH VFD		
SIZE: A	DWG. NO. SALES-PD-#U-#-V#	REV: A
SCALE: 1:12	WEIGHT:	SHEET 1 OF 1