

| ITEM | QTY | DESCRIPTION |
|------|-----|---|
| 1 | 1 | MOTOR - 1750 RPM, INDUSTRIAL DUTY, HP PER ORDER, PAINTED FINISH |
| 2 | 1 | BEARING HOUSING - ALUMINUM, WITH HOLLOW BORE COUPLING, PAINTED FINISH |
| 3 | 1 | ISOLATION MOUNTS - 8.5" X 8.5" STAINLESS STEEL PLATE |
| 4 | 1 | 316 STAINLESS STEEL SHAFT PER ORDER |
| 5 | 1+ | 316SS STAINLESS STEEL MARINE-TYPE IMPELLER, SIZE AND QTY PER ORDER |

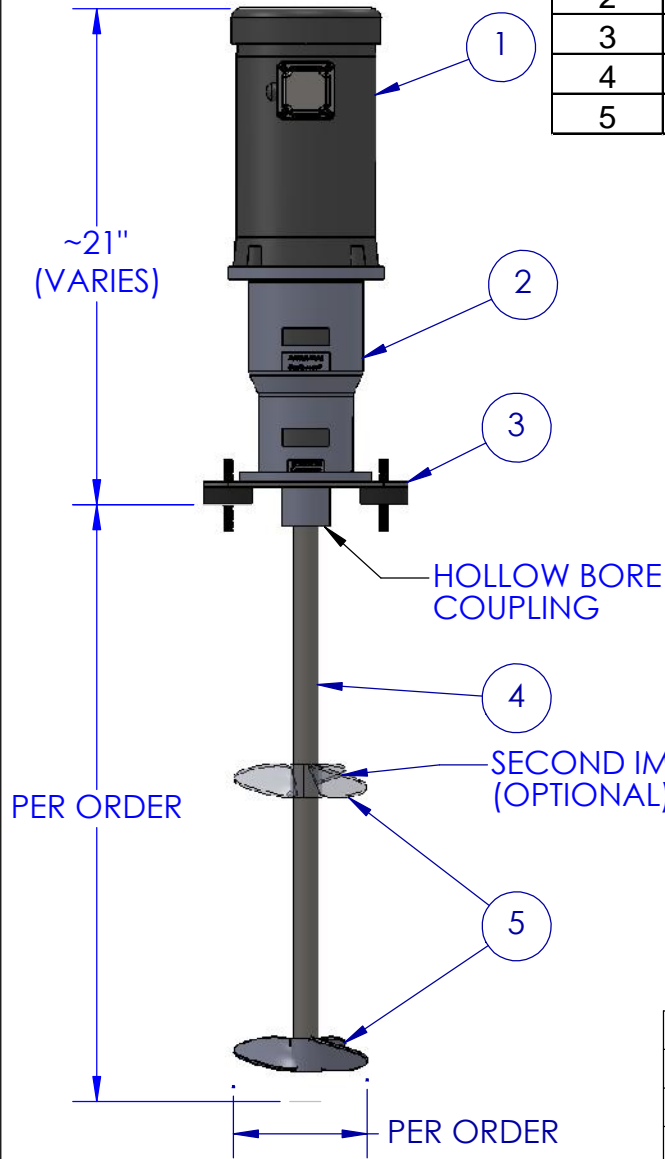
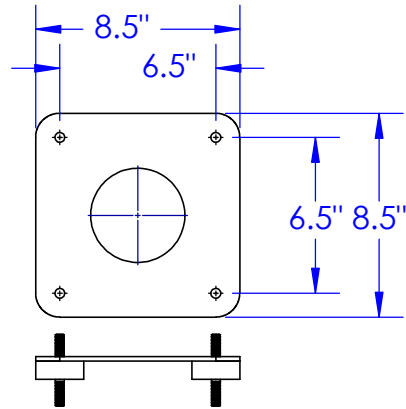
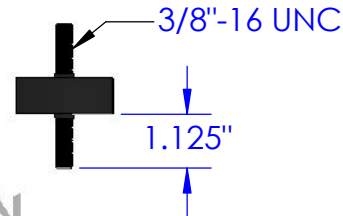


PLATE MOUNT DETAIL



ISOLATION MOUNT



| SPEED TABLE | |
|-------------|----------|
| 1750 RPM | STANDARD |
| 1150 RPM | OPTIONAL |
| 3600 RPM | OPTIONAL |

STANDARD FEATURES

- CAST ALUMINUM HOUSING
- DUAL ABEC-RATED BEARINGS
- STAINLESS PLATE MOUNT
- STAINLESS ARBOR
- STAINLESS FASTENERS

AVAILABLE UPGRADES

- ALL STAINLESS MIXER W/ CAST STAINLESS HOUSING
- SPECIAL ALLOYS
- SANITARY FINISHES
- SHAFT COATINGS
- THREADED SANITARY COUPLINGS
- RIGID COUPLINGS
- VARIOUS IMPELLERS SIZES, STYLES, AND QTY
- DIGITAL TACHOMETER

NOTE: ALL STAINLESS UPGRADE INCLUDES STAINLESS MOTOR, STAINLESS HARDWARE, STAINLESS BEARING HOUSING (WITH VITON O-RING UPPER SEAL AND VITON LIP SEAL LOWER SEAL)

EST WT: 61-82 LBS (DEPENDING ON HP AND OPTIONS)

TYPICAL IMPELLER OPTIONS

| | | | | | | |
|-------------|---------------------------|---------------|---------|---------|-------------------|--------------|
| | | | | | | |
| MARINE PROP | PBT - PITCH BLADE TURBINE | PF3 HYDROFOIL | BIOPROP | RUSHTON | COWLES (SAWTOOTH) | FOLDING PROP |

| NAME | DATE |
|------------|---------|
| DRAWN JDF | 12/4/13 |
| CHECKED TS | 12/4/13 |

PROPRIETARY AND CONFIDENTIAL

THE INFORMATION CONTAINED IN THIS DRAWING IS THE SOLE PROPERTY OF FUSION FLUID EQUIPMENT LLC. ANY REPRODUCTION IN PART OR AS A WHOLE WITHOUT THE WRITTEN PERMISSION OF FUSION FLUID EQUIPMENT LLC IS PROHIBITED.

WHILE FUSION FLUID EQUIPMENT LLC STRIVES TO MAINTAIN THE INTEGRITY OF A DESIGN AS APPROVED, FUSION FLUID EQUIPMENT LLC RETAINS THE RIGHT TO MAKE MODIFICATIONS DURING THE MANUFACTURING PROCESS TO IMPROVE FIT, FORM, AND FUNCTION OF THE DESIGN WITHOUT CUSTOMER NOTIFICATION OR CONSENT.

UNLESS OTHERWISE SPECIFIED: DIMENSIONS ARE IN INCHES. NO TOLERANCE IS IMPLIED. DO NOT SCALE DRAWING

| | | |
|--|------------------------|--------------|
| TITLE: FUSION PRO PD-P PLATE MOUNT MIXER DIRECT DRIVE ELECTRIC | | |
| SIZE: A | DWG. NO. SALES-PD-#P-# | REV: A |
| SCALE: 1:1 | WEIGHT: | SHEET 1 OF 1 |