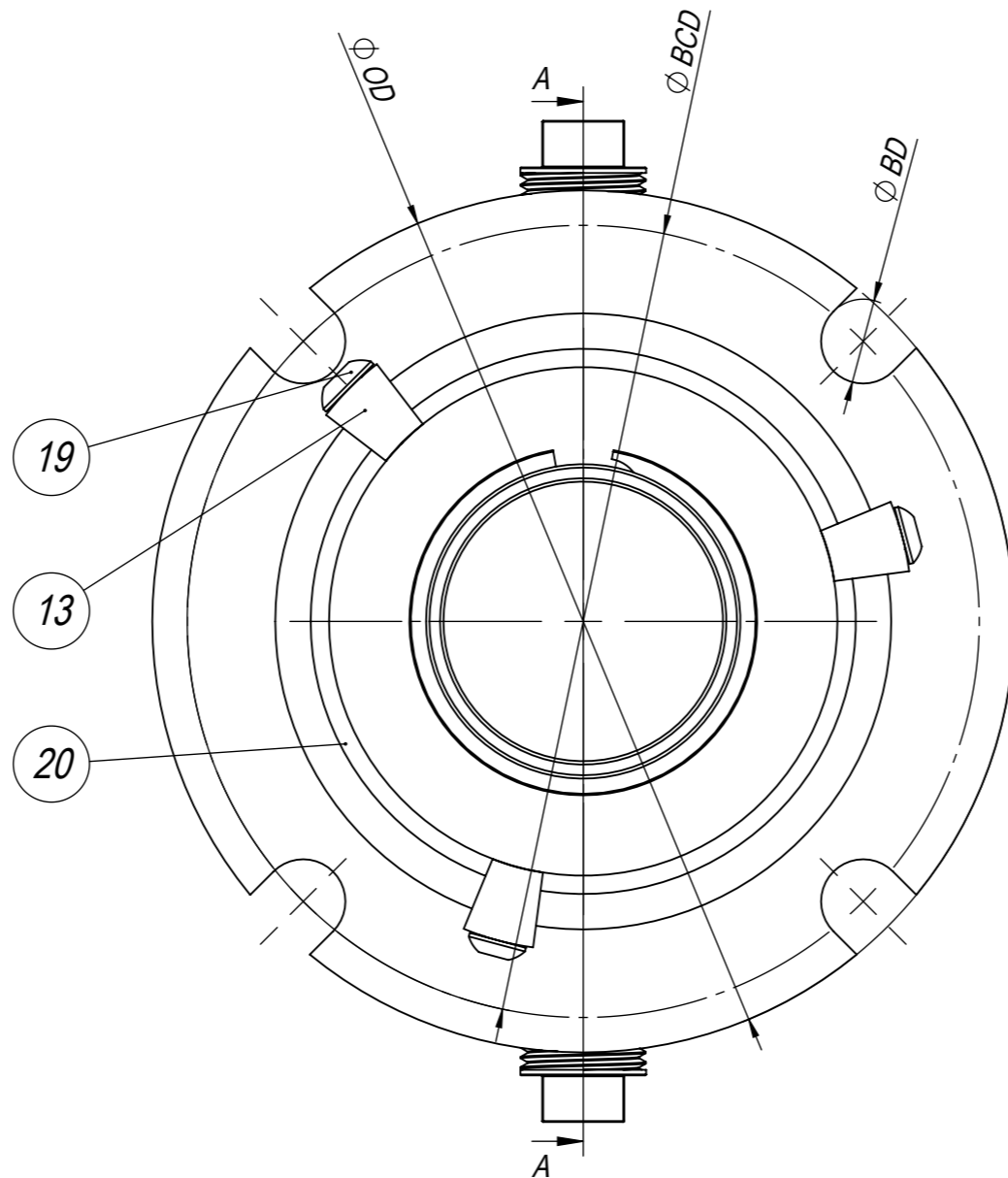
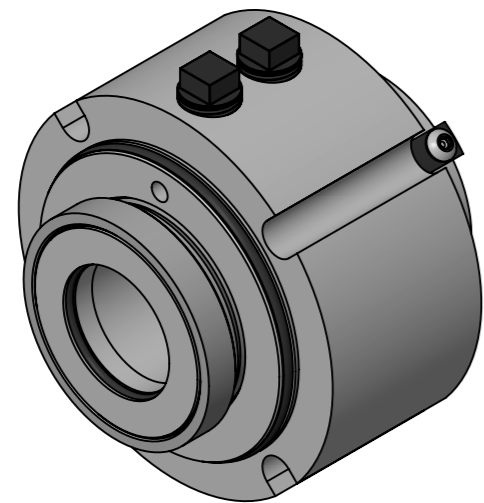


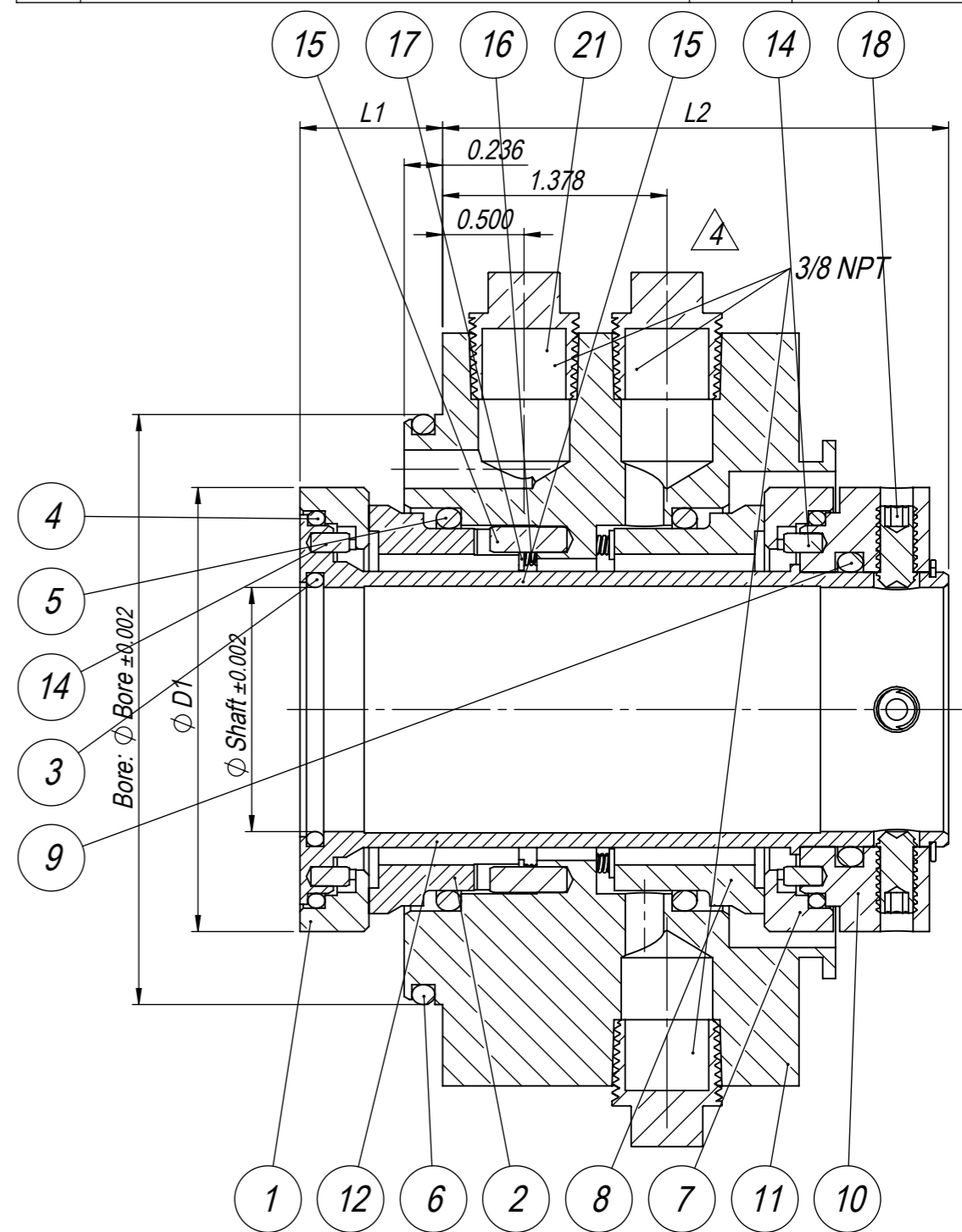
BOM		
Position	Description	Material
1	Rotary Face	SiC/WC-Ni
2	Static Face	C/SiC/WC-Ni
3		
4	O-Ring	EPDM Pharma
5		FKM Pharma
6		
7	Rotary Face	SiC/WC-Ni
8	Static Face	C/SiC/WC-Ni
9	O-Ring	EPDM Pharma FKM Pharma
10	Drive Ring	
11	Housing	316L SS
12	Sleeve	
13	Setup Clip	Aluminum
14	Pin	
15		
16	Coil Spring	316 SS
17	Guide Pin	
18	Set Screw	
19	Screw	304 SS
20	Circlip	302 SS
21	Plug	Plastic

Refer to 13-1290 for part numbers.

Shaft	D1	Bore	OD	L1	L2	BCD	BD
1.000 (25.4 mm)	2.228	3.125	4.125	0.875	3.108	3.750	0.453
1.250 (31.75 mm)	2.478	3.375	4.375	0.875	3.108	4.000	0.453
1.500 (38.1 mm)	2.728	3.625	4.625	0.875	3.108	4.250	0.453
2.000 (50.8 mm)	3.228	4.125	5.750	0.875	3.108	4.875	0.579
2.500 (63.5 mm)	3.831	4.625	6.125	1.000	3.350	5.500	0.579
3.000 (76.2 mm)	4.331	5.125	7.500	1.000	3.350	6.250	0.689
3.500 (88.9 mm)	4.831	5.625	8.000	1.000	3.350	6.750	0.689



Ch.No	Change	Date	Made by	Check. by
4	Added position 21.	2022-01-05	KJW	KJW
5	Added T4 option for rotary face.	2022-01-19	KAV	KJW



A-A

Seal Code								
Type	Size	Rotary Face	Static Face	Secondary Seals	Rotary Face	Static Face	Secondary Seals	Hardware
RT153-	x-	x	x	x-	x	x	x-	x
	25.4	S6 (SiC)	C (Carbon)	E7 (EPDM Pharma)	S6 (SiC)	C (Carbon)	E7 (EPDM Pharma)	C (Complete seal w/out Flush)
	31.75	T4 (WC-Ni)	S6 (SiC)	F7 (FKM Pharma)	T4 (WC-Ni)	S6 (SiC)	F7 (FKM Pharma)	CF (Complete seal w/ Flush)
	38.1	5	T4 (WC-Ni)	Y8 (FEPM)	5	T4 (WC-Ni)	Y8 (FEPM)	
	50.8							
	63.5							
	76.2							
	88.9							

Drawn by KJW	Date 2019-01-24	Description RT153-x-xxx-xxx-x Dual					
Checked by KJW	Approved by KJW	Applicable to					
Format A3	Scale 1:1		Weight (kg) 4.56	Material	Drawing No. 13-1138	Page 1(1)	Rev. 5
The information contained herein is confidential and proprietary information belonging exclusively to Roplan Holding AB and/or its subsidiary companies, and shall not be used or reproduced in any manner, or disclosed to others without the prior written permission of Roplan Holding AB, or a subsidiary company thereof.				此处所包含信息专属于 Roplan Holding AB 及其附属公司，未经 Roplan Holding AB 及其附属公司书面许可，不得使用或以任何方式转载。			