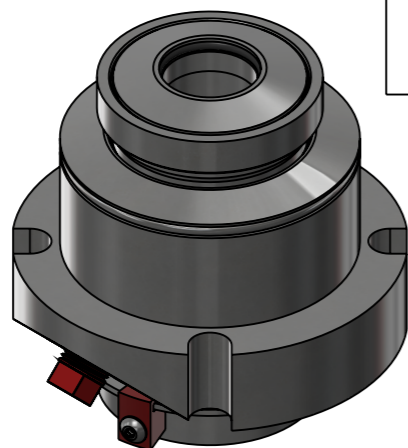
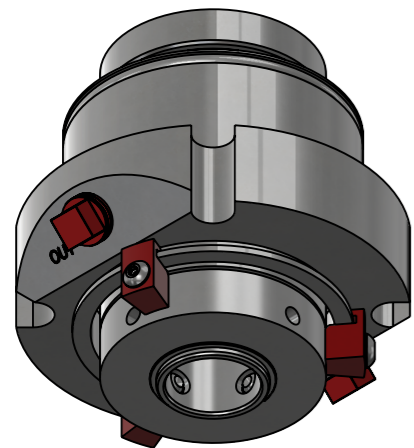


BOM		
Position	Description	Material
1	Rotary Face	See seal code
2	Static Face	See seal code
3		
4	O-Ring	See seal code
5		
6		
7	Rotary Face	See seal code
8	Static Face	See seal code
9	O-Ring	See seal code
10	Drive Ring	316L SS
11	Housing*	
12	Sleeve*	
13	Flow Guide	
14	Setup Clip	Aluminum
15	Pin	316 SS
16		
17	Coil Spring	Alloy C276
18	Guide Pin	316 SS
19	Set Screw	
20	Screw	304 SS
21	Circlip	302 SS
22	Plug	Plastic

Refer to 13-1396 for part numbers.

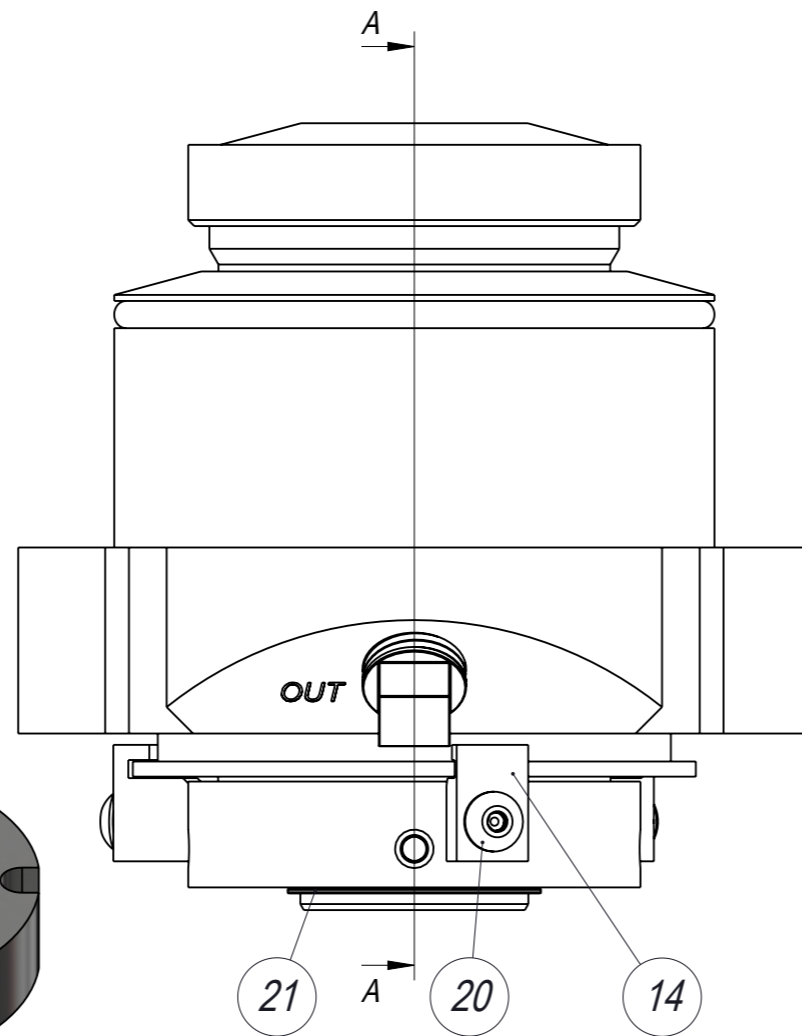
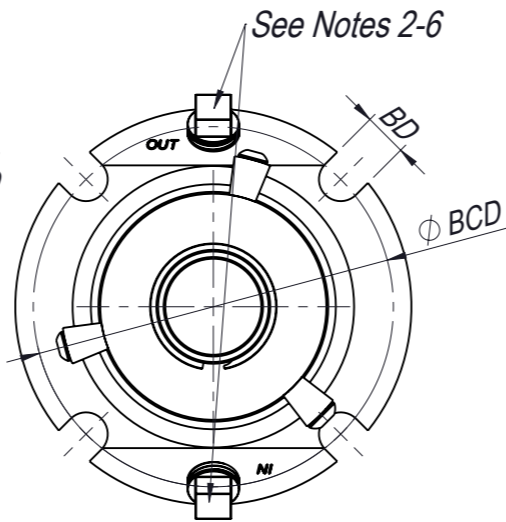
\*Provided with material test reports.

Shaft	D1	Bore	OD (nom.)	L1	L2	BCD	BD	NPT
0.5 (12.7 mm)	1.854	2.625	3.617-3.621 (3.625)	2.209	1.888	3.250	0.453	1/4
0.75 (19.05 mm)	2.104	2.875	3.867-3.871 (3.875)	2.209	1.888	3.500	0.453	1/4
1 (25.4 mm)	2.354	3.125	4.117-4.121 (4.125)	2.209	1.888	3.750	0.453	1/4
1.25 (31.75 mm)	2.604	3.375	4.367-4.371 (4.375)	2.209	1.888	4.000	0.453	1/4
1.5 (38.1 mm)	2.854	3.625	4.617-4.621 (4.625)	2.209	1.888	4.250	0.453	1/4
2 (50.8 mm)	3.354	4.125	5.742-5.746 (5.750)	2.209	1.888	4.875	0.579	1/4
2.5 (63.5 mm)	3.957	4.625	6.117-6.121 (6.125)	2.329	2.142	5.500	0.579	1/4
3 (76.2 mm)	4.457	5.125	7.492-7.496 (7.500)	2.329	2.142	6.250	0.579	3/8
3.5 (88.9 mm)	4.957	5.625	7.992-7.996 (8.000)	2.329	2.142	6.750	0.579	3/8

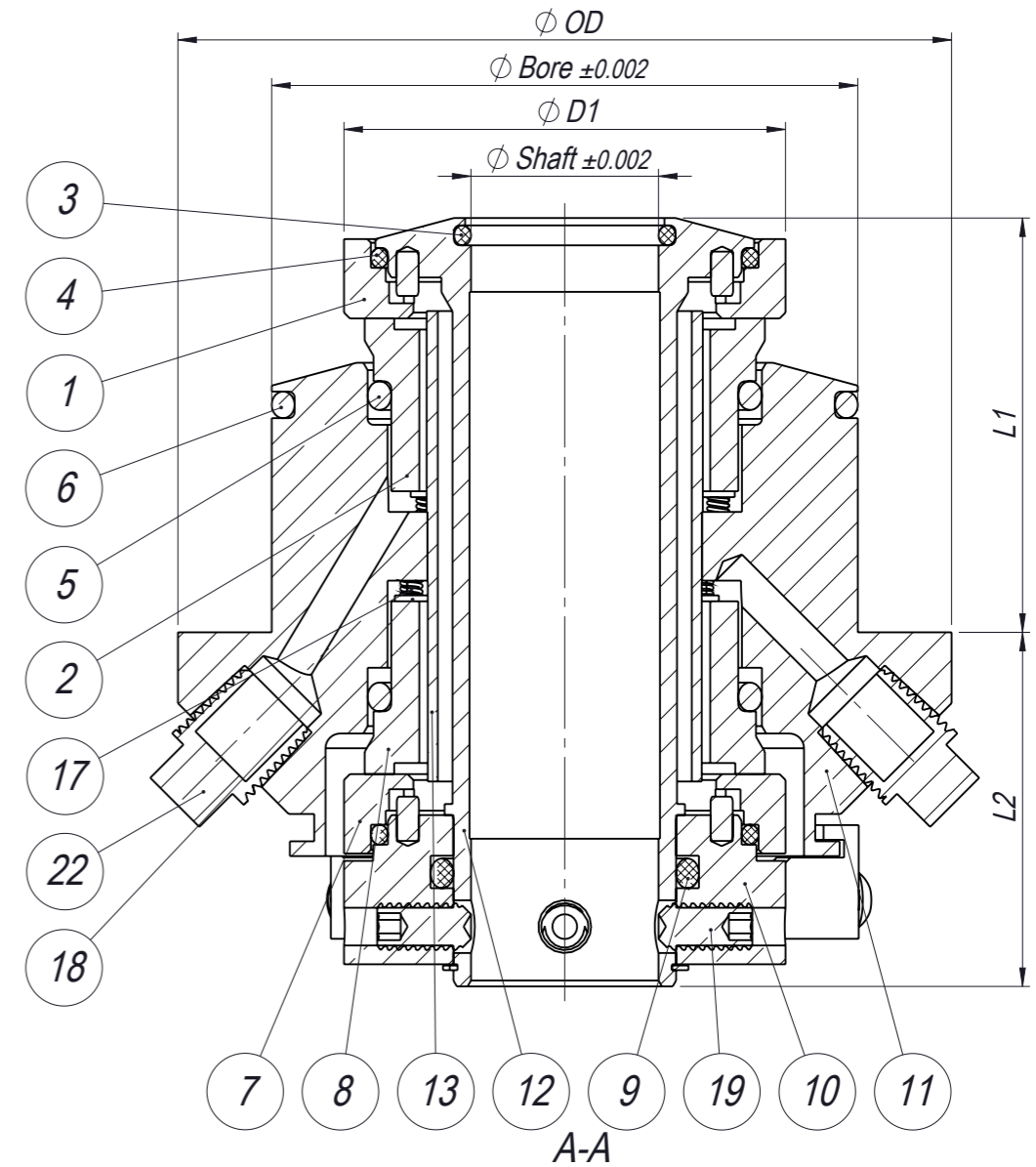
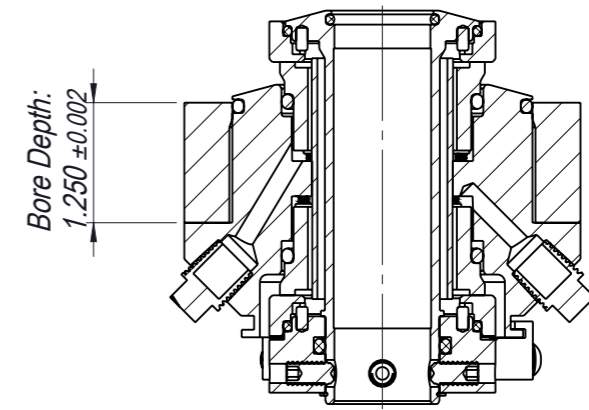


### Notes

1. Seal can be vertically or horizontally mounted.
2. Seal can be used with barrier or buffer.
3. Barrier/buffer port designations refer to INNER and OUTER seal and NOT INlet and OUTlet.
4. When mounted horizontally port IN must be in 6 o'clock position and used as barrier/buffer inlet.
5. When mounted vertically with product above seal, port IN must be used as barrier/buffer inlet.
6. When mounted vertically with product below seal, port OUT must be used as barrier/buffer inlet.



Ch.No	Change	Date	Made by	Check. by
6	Added E1 and F1 options for elastomers.	2022-10-18	KAV	KJW



Seal Code										
Type	Size	Rotary Face	Static Face	Metal	Secondary Seals	Rotary Face	Static Face	Secondary Seals	Hardware	
M36-	x-	x	x	x	x-	x	x	x-	x	
	12.70	S6 (SiC)	C (Carbon)	A4 (316L)	E1 (EPDM FDA)	S6 (SiC)	C (Carbon)	E1 (EPDM FDA)	C (Complete Seal)	
	19.05	T4 (WC-Ni)	S6 (SiC)	W0 (C-22)	E7 (EPDM Pharma)	T4(WC-Ni)	S6 (SiC)	E7 (EPDM Pharma)		
	25.40		T4 (WC-Ni)		F1 (FKM FDA)		T4 (WC-Ni)	F1 (FKM FDA)		
	31.75				F7 (FKM Pharma)			F7 (FKM Pharma)		
	38.10				Y7 (FEPM)			Y7 (FEPM)		
	50.80				Q0 (FFKM Pharma)			Q0 (FFKM Pharma)		
	63.50									
	76.20									
	88.90									

Drawn by <b>KJW</b>	Date <b>2021-04-19</b>	Description <b>M36</b>				
Checked by <b>KJW</b>	Approved by <b>KJW</b>	Applicable to				
Format <b>A3</b>	Scale <b>1:1</b>	Weight (kg) <b>2.91</b>	Material	Drawing No. <b>13-1395</b>	Page <b>1(1)</b>	Rev. <b>6</b>
The information contained herein is confidential and proprietary information belonging exclusively to Roplan Sales AB and/or its subsidiary companies, and shall not be used or reproduced in any manner, or disclosed to others without the prior written permission of Roplan Sales AB, or a subsidiary company thereof.			此处所包含信息专属于 Roplan Sales AB 及其附属公司，未经 Roplan Sales AB 及其附属公司书面许可，不得使用或以任何方式转载。			