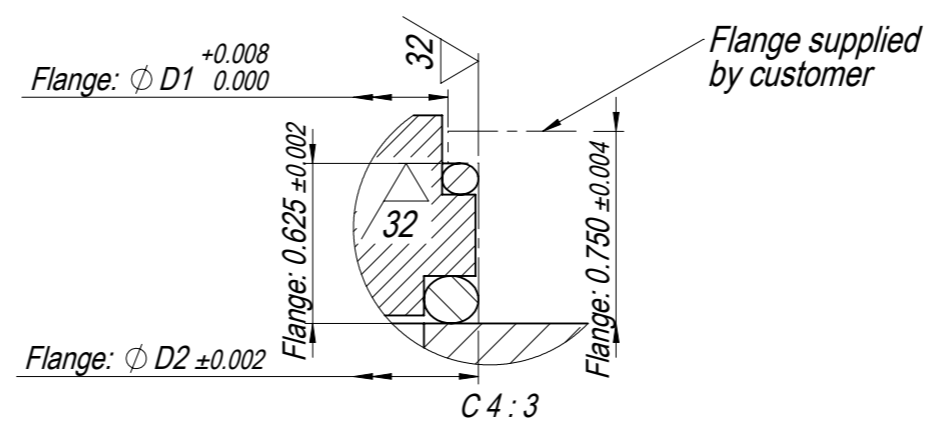
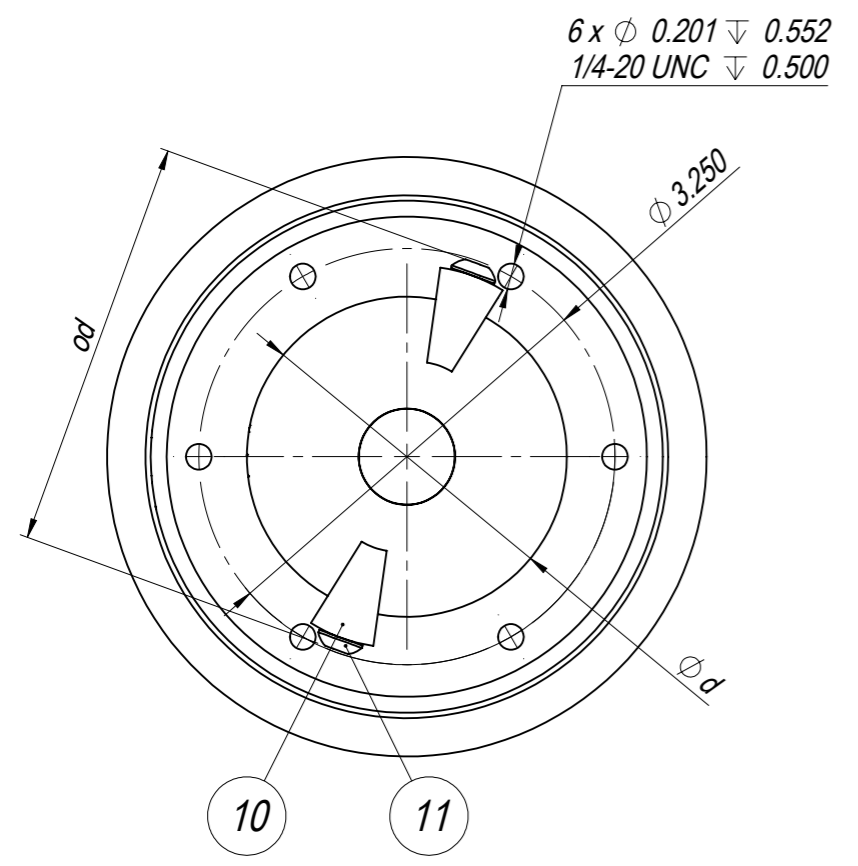
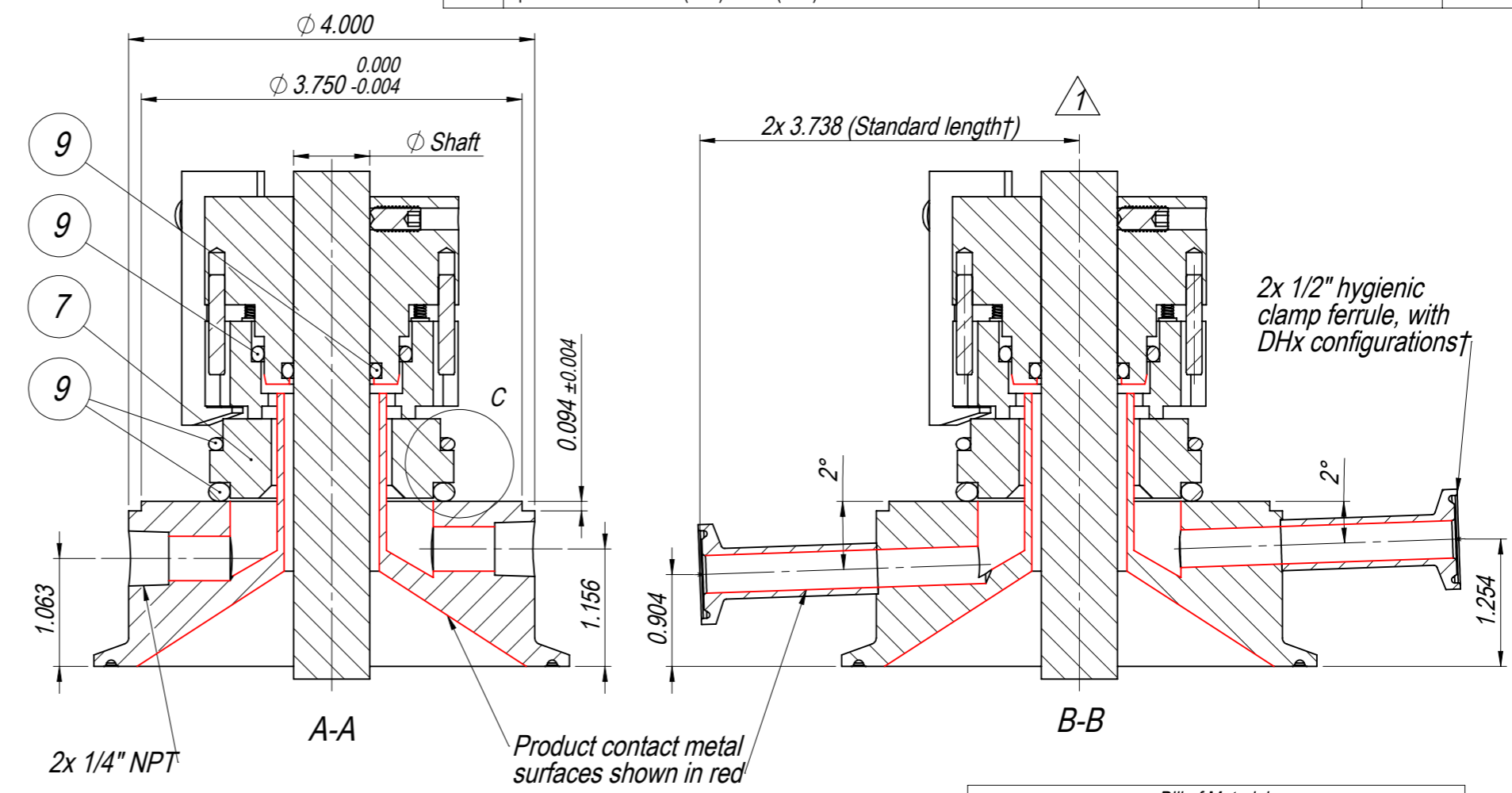
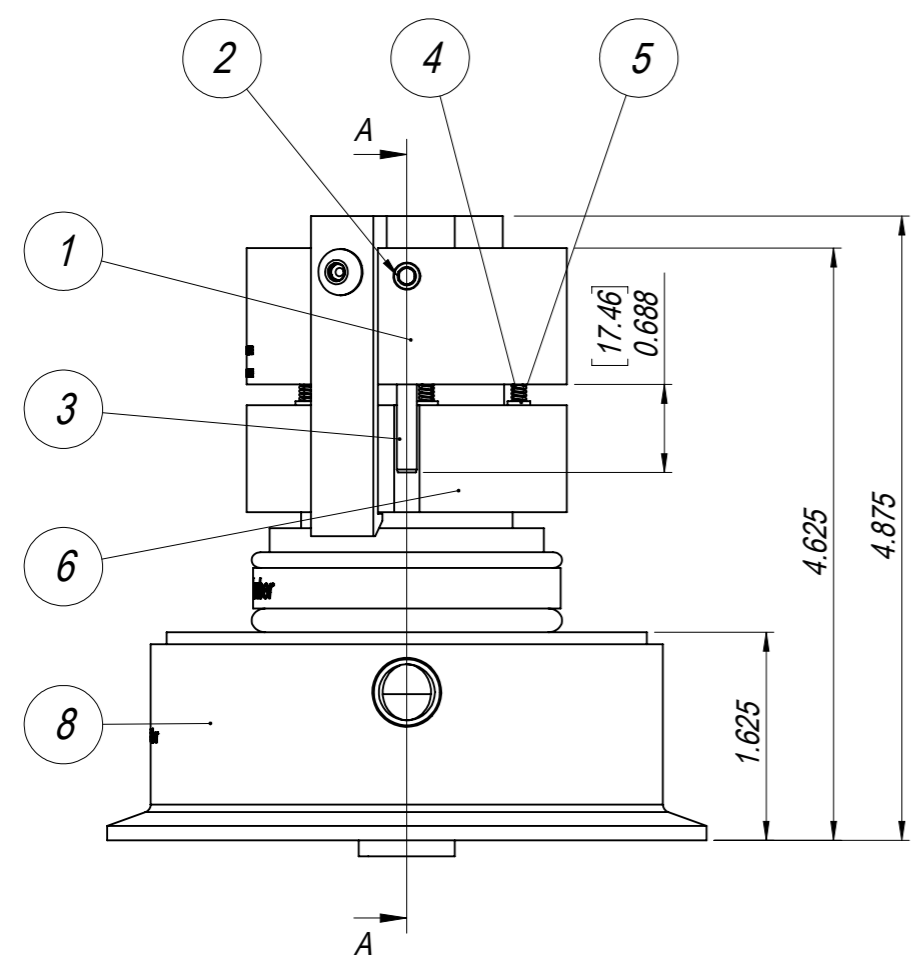


Ch.No	Change	Date	Made by	Check. by
1	Added DH2, DH3, DH4 and CC hygienic clamp ferrule/custom connection options.	2018-05-07	VID	KJW
2	Updated D2 dimension (was) 2.245 (now) 2.425	2020-07-29	KAV	KJW



Bill of Materials		
Item Number	Description	Material
1	Rotary Holder*	See seal code
2	Set Screw	18/8 SS
3	Drive Pin	AISI 316/316L
4	Coil Spring	AISI 302
5	Guide Pin	AISI 316/316L
6	Rotary Face*	See seal code
7	Static Face*	See seal code
8	Debris Well*	See seal code
9	O-Rings*	See seal code
10	Setup Clip	Aluminum
11	Setup Clip Screw	18/8 SS
-	*Certificate of Traceability	-
-	Specification & Spare Parts List	-

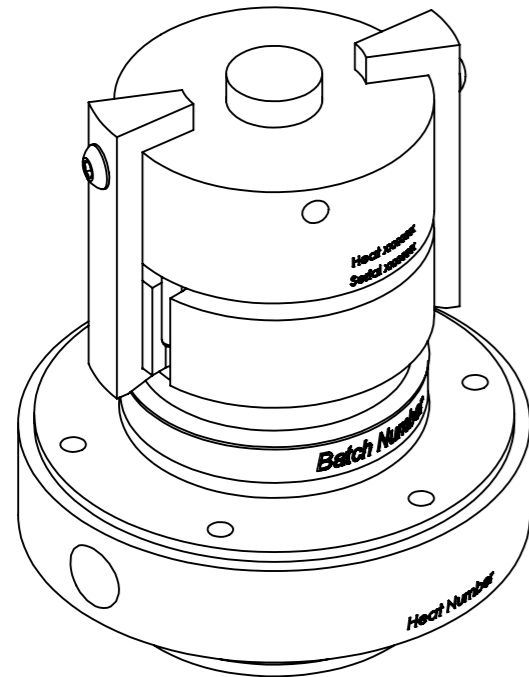
Refer to 13-0072 for complete parts list and specification.

Dimensions [Inches]					
Size	Shaft	D1	D2	d	od
075	0.75	2.187	2.425	2.5	3.211
100	1	2.437	2.675	2.75	3.464

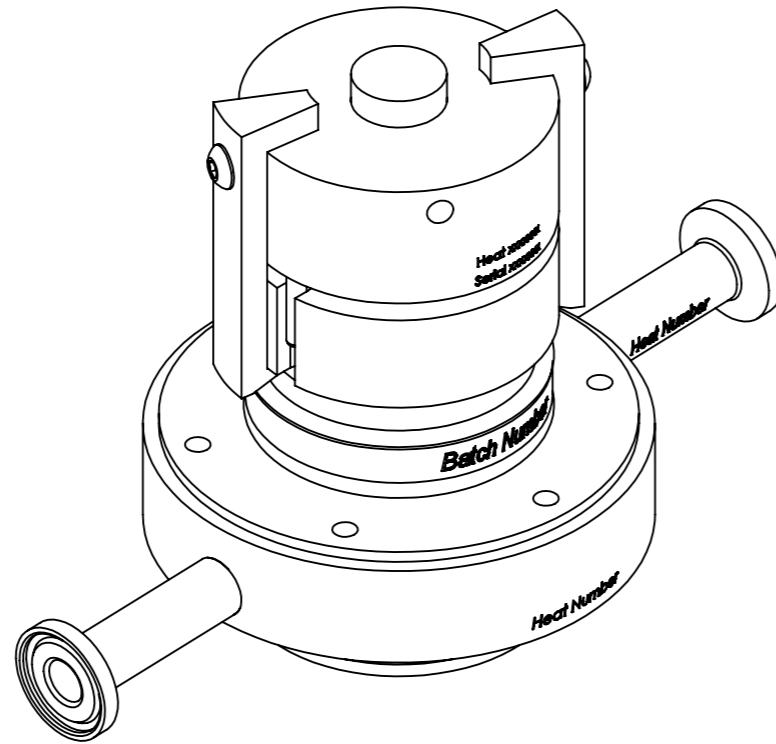
Drawn by VID	Date 2018-03-06	Description SDRJ 3/4" - 1"	Roplan MECHANICAL SEALS
Checked by KJW	Approved by KJW	Applicable to	
Format A3	Scale 2:3	Weight (kg) 4.14	Material
Drawing No. 13-0905			Page 1(2)
Rev. 2			

The information contained herein is confidential and proprietary information belonging exclusively to Roplan Holding AB and/or its subsidiary companies, and shall not be used or reproduced in any manner, or disclosed to others without the prior written permission of Roplan Holding AB, or a subsidiary company thereof.

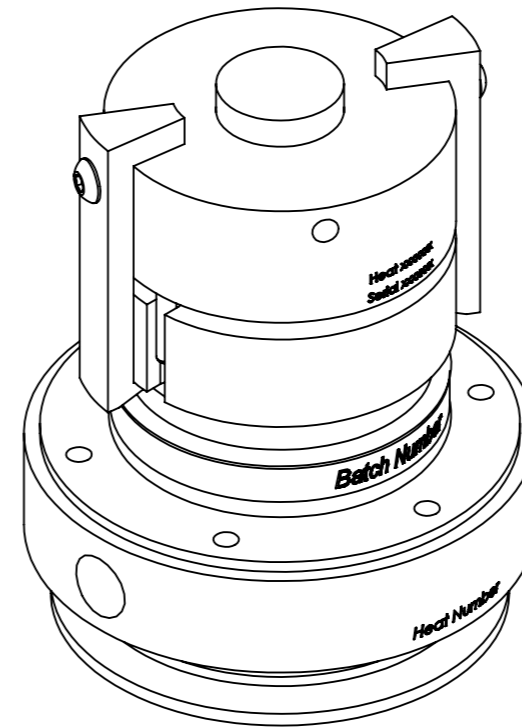
Seal Code								
Type	Size	Rotary Face	Stationary Face	Metal*	Elastomers	Surface Finish**	Debris Well Ferrule Size	Options
SDRJ	075 (0.75") 100 (1")	C9 (FDA Carbon) J6 (PTFE/Carbon)	S6 (FDA SiC) T4 (FDA TC)	A4 (AISI 316L)	E7 (EPDM Pharma) F7 (FKM Pharma) L7 (Silicone Pharma) Q0 (FFKM Pharma) Z5 (FFKM)*** Z7 (FFKM USP <88> Class VI)***	0 (32 micro-inch Ra) 1 (20 micro-inch Ra) 4 (15 micro-inch Ra + EP) A (20 micro-inch Ra + Pass.) D (15 micro-inch Ra + EP + Pass.)	DW2 (2") DW3 (3") DW4 (4") DH2 (2", w/ HCF ports†) DH3 (3", w/ HCF ports†) DH4 (4", w/ HCF ports†)	CC
<p>*Only applicable to product contact parts. **Only applicable to product contact surfaces. ***Elastomers not traceable. †With hygienic clamp ferrule connections (1/2"x1 3/4"). Other connection types or lengths may be specified on order using option CC.</p>								



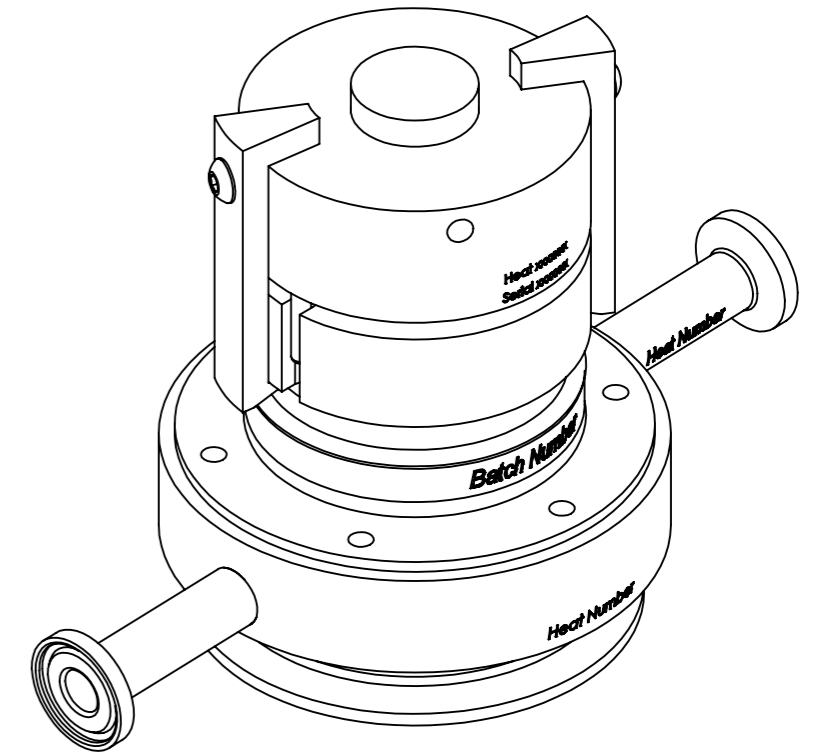
e.g. SDRJ075C9S6A4E70DW2



e.g. SDRJ075C9S6A4E70DH2



e.g. SDRJ100C9S6A4E70DW3



e.g. SDRJ100C9S6A4E70DH3

Drawn by VID	Date 2018-03-06	Description SDRJ 3/4" - 1"				
Checked by KJW	Approved by KJW	Applicable to				
Format A3	Scale 2:3		Weight (kg) 2.98	Material		
<p>The information contained herein is confidential and proprietary information belonging exclusively to Roplan Holding AB and/or its subsidiary companies, and shall not be used or reproduced in any manner, or disclosed to others without the prior written permission of Roplan Holding AB, or a subsidiary company thereof.</p>						