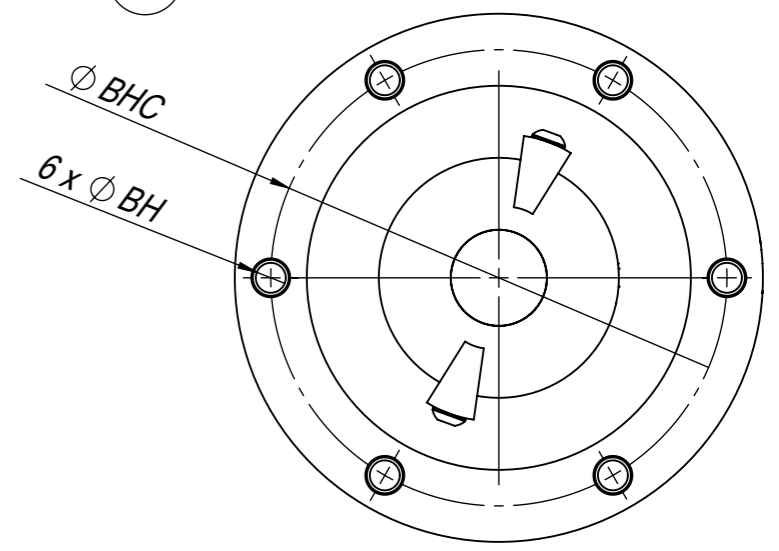
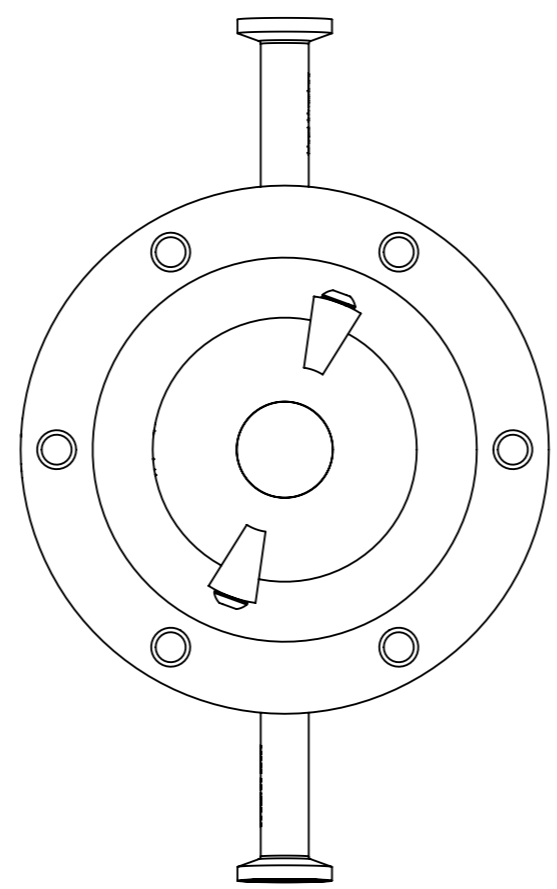
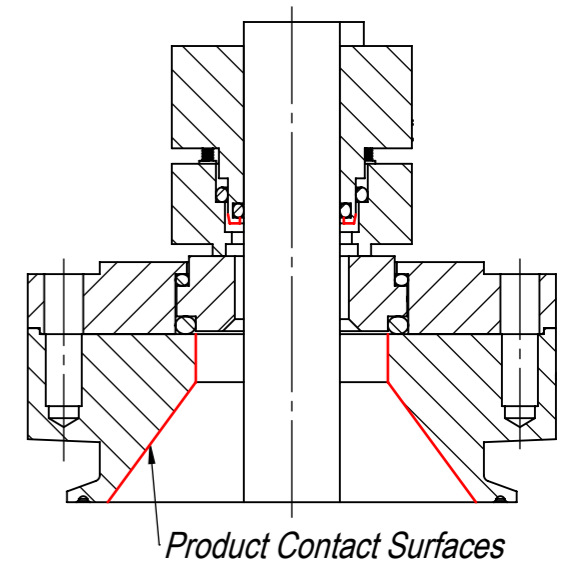
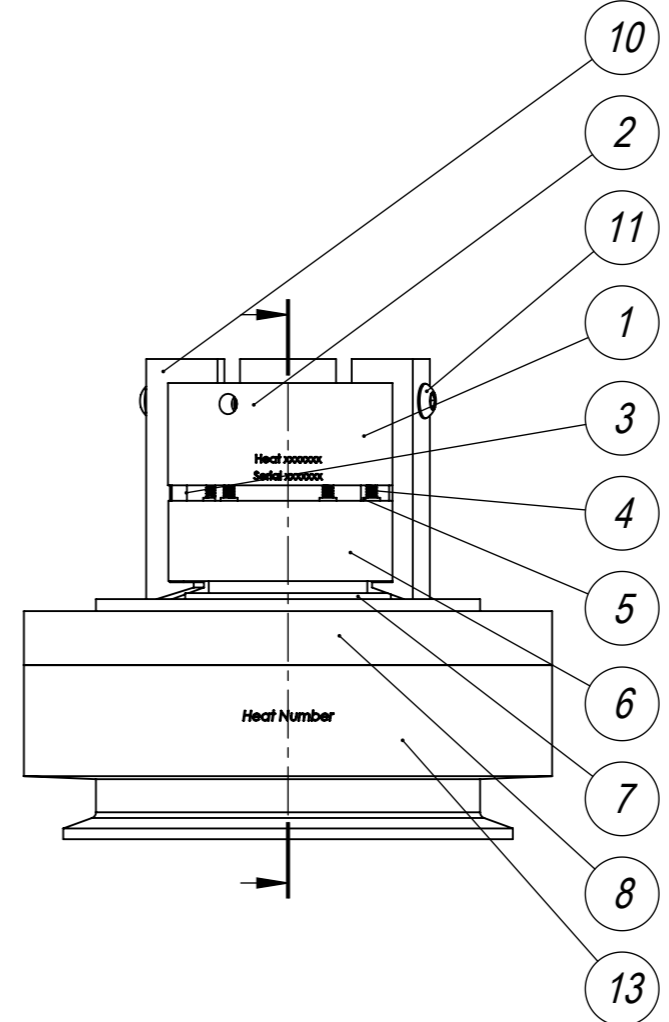
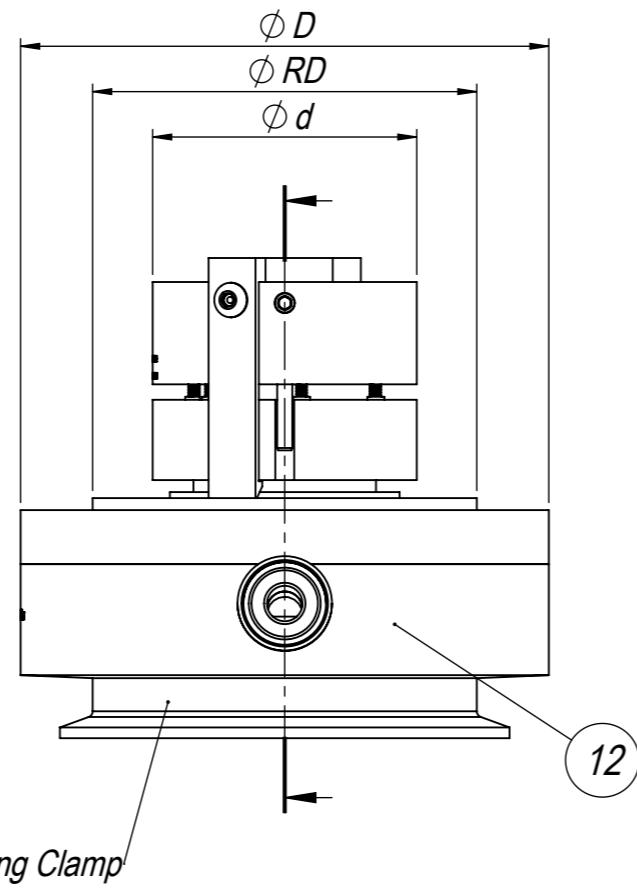
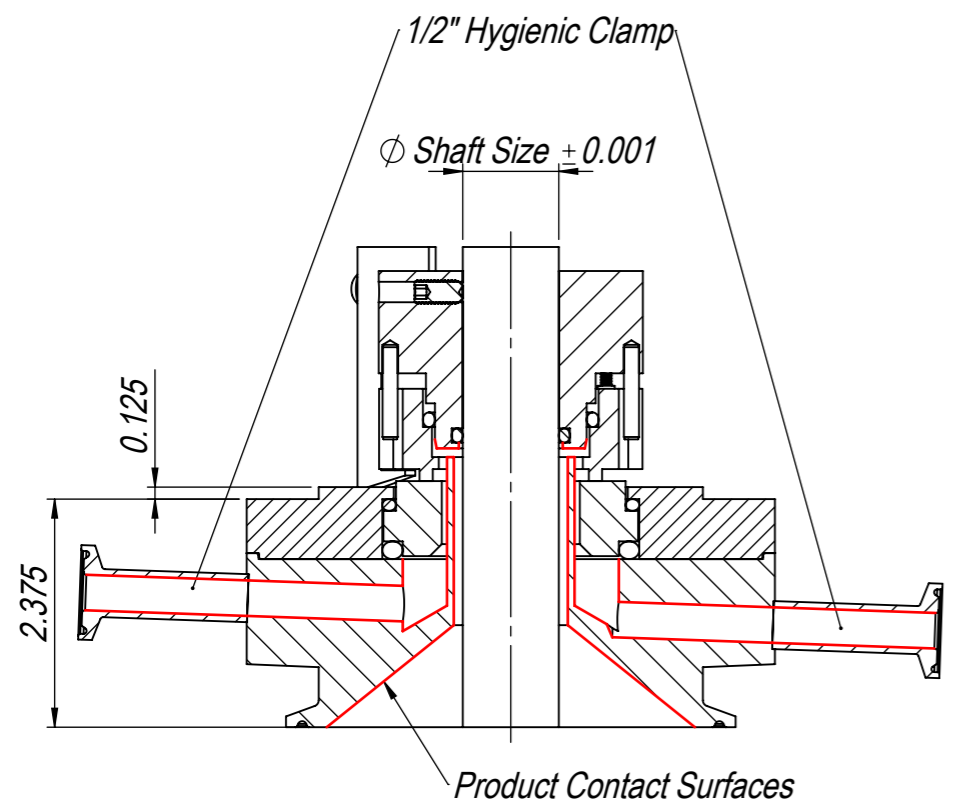


Ch.No	Change	Date	Made by	Check. by	Appr. by
1	Added 0.5" shaft size.	2010-12-22	KJW		
2	Updated J1 to J6, removed Z5, and added A6, W0, W3, P2, P3, Z0, Z2 and Z6 to seal code on Sheet 2.	2022-05-25	KAV	KJW	KJW



Bill of Materials		
Item Number	Description	Material
1	Rotary Holder*	See seal code
2	Set Screw	18/8 SS
3	Drive Pin	AISI 316/316L
4	Coil Spring	AISI 302
5	Guide Pin	AISI 316/316L
6	Rotary Face*	See seal code
7	Static Face*	See seal code
8	Gland Ring	AISI 316L
9	O-Rings*	See seal code
10	Setup Clip	Aluminum
11	Setup Clip Screw	18/8 SS
12	Debris Well*	See seal code
13	Seal Flange*	See seal code
-	Debris Well Screws	18/8 SS
-	*Certificate of Traceability	-
-	Specification & Spare Parts List	-

Refer to 13-0072 for complete parts list and specification.

Drawn by <b>KJW</b>	Date <b>2010-11-08</b>	Description <b>SDRH 1/2" - 2 1/2"</b>	<b>Roplan</b> MECHANICAL SEALS			
Checked by <b>KJW</b>	Approved by <b>KJW</b>	Applicable to -				
Format <b>A3</b>	Scale <b>1:2</b>	Weight (kg) -	Material	Drawing No. <b>13-0286</b>	Page <b>1(2)</b>	Rev. <b>2</b>

The information contained herein is confidential and proprietary information belonging exclusively to Roplan Sales AB and/or its subsidiary companies, and shall not be used or reproduced in any manner, or disclosed to others without the prior written permission of Roplan Sales AB, or a subsidiary company thereof.

此处所包含信息专属于 Roplan Sales AB 及其附属公司，未经 Roplan Sales AB 及其附属公司书面许可，不得使用或以任何方式转载。

Type	Size	Seal Code							
		Rotary Face	Stationary Face	Metal*	Elastomers	Surface Finish**	Configuration	Option	
SDRH									
	050 (0.5")	C3 (FDA Carbon)	S6 (FDA SiC)	A4 (AISI 316L)	E7 (EPDM Pharma)	0 (32 micro-inch Ra)	-- (Non)	-- (Non)	
	062 (0.625")	C9 (FDA Carbon)	T4 (FDA TC)	G2 (C-276)	F7 (FKM Pharma)	1 (20 micro-inch Ra)	DW (Debris Well)	SO (Seal Only)	
	075 (0.75")	J6 (PTFE-Carbon)		A9 (AL6XN)	L7 (Silicone Pharma)	4 (15 micro-inch Ra + EP)	SF (Seal Flange)		
	087 (0.875")	2	2	A6 (2205)	P2 (FEP Silicone)***	A (20 micro-inch Ra + Pass.)			
	100 (1")			W0 (C-22)	P3 (FEP FKM)***	D (15 micro-inch Ra + EP + Pass.)			
	112 (1.125")			W3 (B-3)	Q0 (FFKM Pharma)				
	125 (1.25")				Z0 (FFKM)***				
	137 (1.375")			2	Z2 (Kalrez® 6230)***				
	150 (1.5")				Z6 (Kalrez® Spectrum 6375)***				
	162 (1.625")				Z7 (FFPM USP <88> Class VI)***				
	175 (1.75")								
	187 (1.875")								
	200 (2")								
	212 (2.125")								
	225 (2.25")								
	237 (2.375")								
	250 (2.5")								

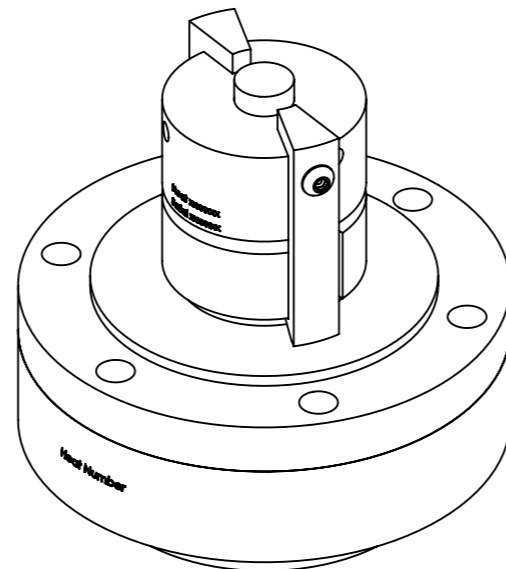
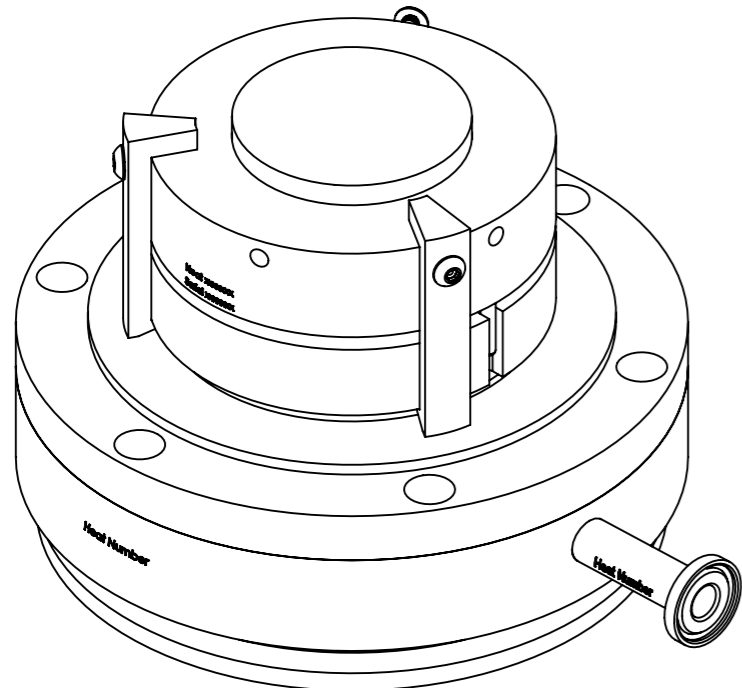
\*Only applicable to product contact parts.

\*\*Only applicable to product contact surfaces

\*\*\*Elastomers not traceable.

Ch.No	Change	Date	Made by	Check. by
2	Updated J1 to J6, removed Z5, and added A6, W0, W3, P2, P3, Z0, Z2 and Z6 to seal code	2022-05-25	KAV	KJW

Dimensions							
Shaft Size	incl. Debris Well	D	d	RD	BH	BHC	Hygienic Mounting Flange
0.5		5	2	3.5	3/8 UNC	4.25	3
0.5	x	5	2.25	3.5	3/8 UNC	4.25	3
0.625		5.125	2.125	3.625	3/8 UNC	4.375	3
0.625	x	5.125	2.375	3.625	3/8 UNC	4.375	3
0.75		5.25	2.25	3.75	3/8 UNC	4.5	3
0.75	x	5.25	2.5	3.75	3/8 UNC	4.5	3
0.875		5.375	2.375	3.875	3/8 UNC	4.625	3
0.875	x	5.375	2.625	3.875	3/8 UNC	4.625	3
1		5.5	2.5	4	3/8 UNC	4.75	4
1	x	5.5	2.75	4	3/8 UNC	4.75	4
1.125		5.625	2.625	4.125	3/8 UNC	4.875	4
1.125	x	5.625	2.875	4.125	3/8 UNC	4.875	4
1.25		5.75	2.75	4.25	3/8 UNC	5	4
1.25	x	5.75	3	4.25	3/8 UNC	5	4
1.375		5.875	2.875	4.375	3/8 UNC	5.125	4
1.375	x	5.875	3.125	4.375	3/8 UNC	5.125	4
1.5		6	3	4.5	3/8 UNC	5.25	4
1.5	x	6	3.25	4.5	3/8 UNC	5.25	4
1.625		6.125	3.125	4.625	3/8 UNC	5.375	4
1.625	x	6.125	3.375	4.625	3/8 UNC	5.375	4
1.75		6.25	3.25	4.75	3/8 UNC	5.5	4
1.75	x	6.25	3.5	4.75	3/8 UNC	5.5	4
1.875		6.375	3.375	4.875	3/8 UNC	5.625	4
1.875	x	6.375	3.625	4.875	3/8 UNC	5.625	4
2		6.5	3.5	5	1/2 UNC	5.75	6
2	x	6.5	3.75	5	1/2 UNC	5.75	6
2.125		6.625	3.625	5.125	1/2 UNC	5.875	6
2.125	x	6.625	3.875	5.125	1/2 UNC	5.875	6
2.25		6.75	3.75	5.25	1/2 UNC	6	6
2.25	x	6.75	4	5.25	1/2 UNC	6	6
2.375		6.875	3.875	5.375	1/2 UNC	6.125	6
2.375	x	6.875	4.125	5.375	1/2 UNC	6.125	6
2.5		7	4	5.5	1/2 UNC	6.25	6
2.5	x	7	4.25	5.5	1/2 UNC	6.25	6



Drawn by <b>KJW</b>	Date <b>2010-11-08</b>	Description <b>SDRH 1/2" - 2 1/2"</b>				
Checked by <b>KJW</b>	Approved by <b>KJW</b>	Applicable to <b>-</b>				
Format <b>A3</b>	Scale <b>1:2</b>	Weight (kg) <b>-</b>	Material <b>-</b>	Drawing No. <b>13-0286</b>	Page <b>2(2)</b>	Rev. <b>2</b>

The information contained herein is confidential and proprietary information belonging exclusively to Roplan Sales AB and/or its subsidiary companies, and shall not be used or reproduced in any manner, or disclosed to others without the prior written permission of Roplan Sales AB, or a subsidiary company thereof. 此处所包含信息专属于 Roplan Sales AB 及其附属公司，未经 Roplan Sales AB 及其附属公司书面许可，不得使用或以任何方式转载。