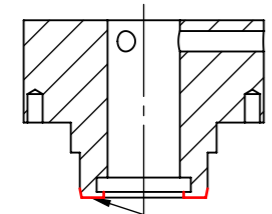


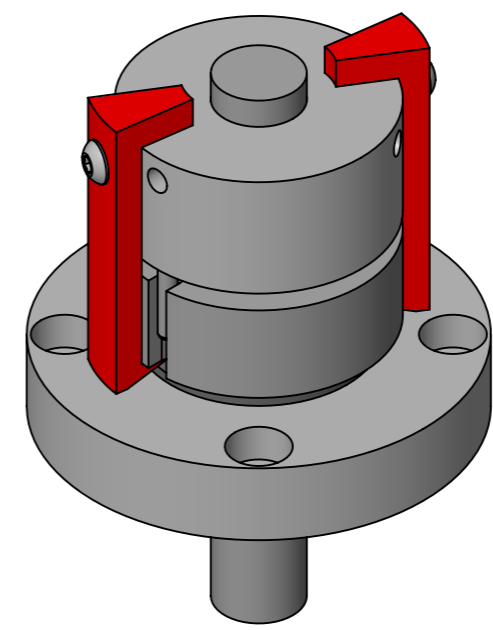
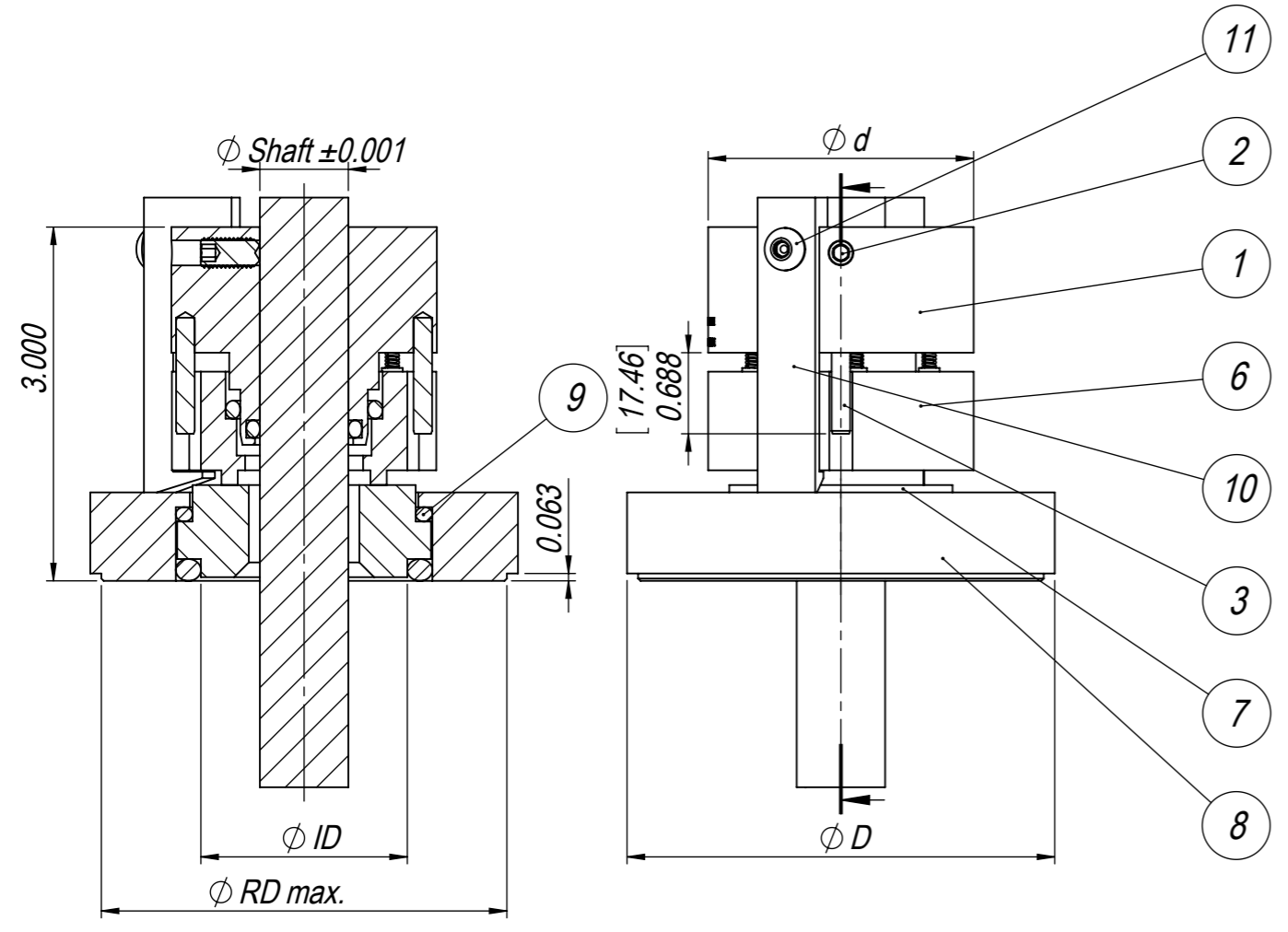
Ch.No	Change	Date	Made by	Check. by	Appr. by
4	Updated to show debris well version on Page 2.	2021-11-05	KJW	KJW	KJW
5	Removed Z5 and added A6, W3 and Z0 to seal code.	2022-05-24	KAV	KJW	KJW

Seal Code								
Type	Size	Rotary Face	Stationary Face	Metal ¹	Elastomers	Surface Finish ²	Configuration	Option
SDRG	050 (0.5")	C3 (FDA Carbon)	S6 (FDA SiC)	A4 (Type 316L)	E7 (EPDM Pharma)	0 (32 micro-inch Ra)	--	--
	062 (0.625")	C9 (FDA Carbon)	T4 (FDA TC)	A6 (2205)	F7 (FKM Pharma)	1 (20 micro-inch Ra)		SO (Seal Only)
	075 (0.75")	J6 (PTFE- Carbon)		A9 (AL6XN)	L7 (Silicone Pharma)	4 (15 micro-inch Ra + EP)		
	087 (0.875")			G2 (C-276)	P2 (FEP/Silicone) ³	A (20 micro-inch Ra + Pass.)		
	100 (1")			W0 (C-22)	P3 (FEP/FKM) ³	D (15 micro-inch Ra + EP + Pass.)		
	112 (1.125")			W3 (B-3)	Q0 (FFKM Pharma)			
	125 (1.25")				Z0 (FFKM) ³			
	137 (1.375")				Z2 (Kalrez® 6230) ³			
	150 (1.5")				Z6 (Kalrez® Spectrum 6375) ³			
						Z7 (FFKM USP <88> Class VI) ³		

¹ Only applicable to product contact parts.
² Only applicable to product contact surfaces.
³ Elastomers not traceable



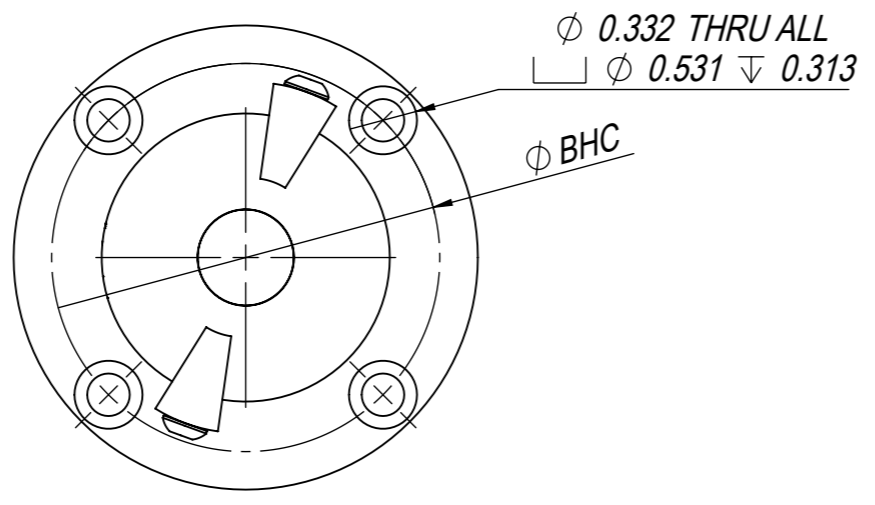
Product Contact Surfaces



Dimensions [Inches]					
Shaft Size	D	d	ID	RD	BHC
0.5	3.375	2	1.5	3.188	2.781
0.625	3.5	2.125	1.625	3.313	2.906
0.75	3.625	2.25	1.75	3.438	3.031
0.875	3.75	2.375	1.875	3.563	3.156
1	3.875	2.5	2	3.688	3.281
1.125	4	2.625	2.125	3.813	3.406
1.25	4.125	2.75	2.25	3.938	3.531
1.375	4.25	2.875	2.375	4.063	3.656
1.5	4.375	3	2.5	4.188	3.781

Bill of Materials		
Item Number	Description	Material
1	Rotary Holder*	See seal code
2	Set Screw	Type 304
3	Drive Pin	Type 316
4	Coil Spring	Type 301/302
5	Guide Pin	Type 316
6	Rotary Face*	See seal code
7	Static Face*	See seal code
8	Gland Ring*	Type 316L
9	O-Rings*	See seal code
10	Setup Clip	Aluminum
11	Setup Clip Screw	Type 304
-	*Certificate of Traceability	-
-	Specification & Spare Parts List	-

Refer to 13-0072 for complete parts list and specification.



Drawn by KJW	Date 2010-03-24	Description SDRG 0.5" - 1.5"				
Checked by KJW	Approved by KJW	Applicable to -				
Format A3	Scale 2:3	Weight (kg) -	Material See Table	Drawing No. 13-0156	Page 1(2)	Rev. 5

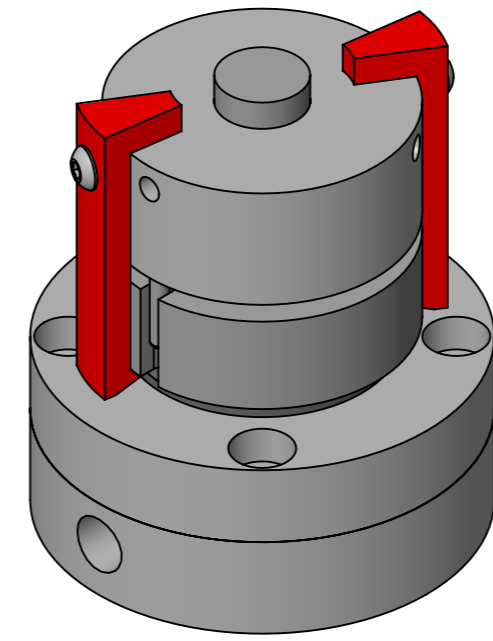
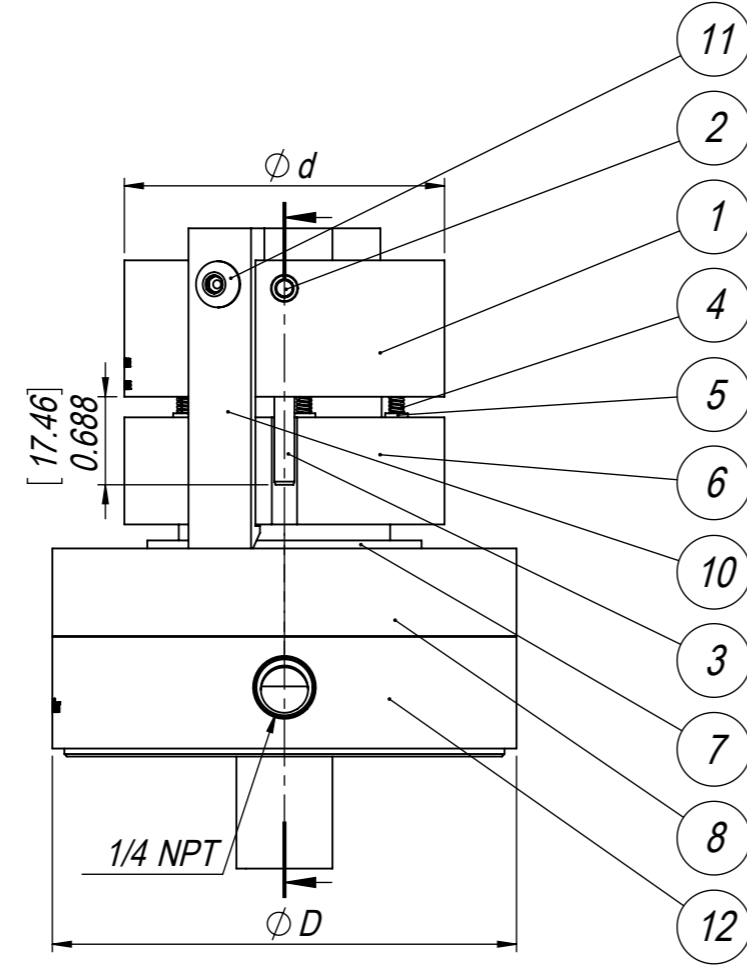
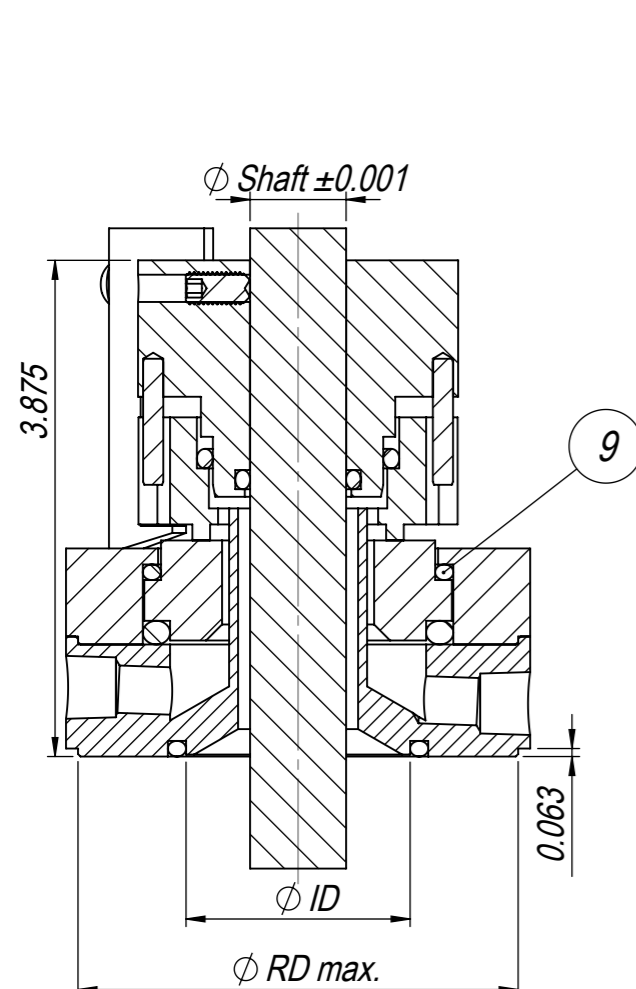
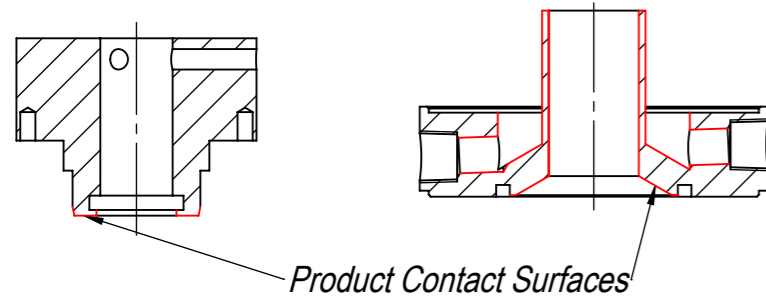
The information contained herein is confidential and proprietary information belonging exclusively to Roplan Sales AB and/or its subsidiary companies, and shall not be used or reproduced in any manner, or disclosed to others without the prior written permission of Roplan Sales AB, or a subsidiary company thereof.

此处所包含信息专属于 Roplan Sales AB 及其附属公司，未经 Roplan Sales AB 及其附属公司书面许可，不得使用或以任何方式转载。

Ch.No	Change	Date	Made by	Check. by	Appr. by
4	Updated to show debris well version on Page 2.	2021-11-05	KJW	KJW	KJW
5	Removed Z5 and added A6, W3 and Z0 to seal code.	2022-05-24	KAV	KJW	KJW

Seal Code								
Type	Size	Rotary Face	Stationary Face	Metal ¹	Elastomers	Surface Finish ²	Configuration	Option
SDRG	050 (0.5")	C3 (FDA Carbon)	S6 (FDA SiC)	A4 (Type 316L)	E7 (EPDM Pharma)	0 (32 micro-inch Ra)	--	--
	062 (0.625")	C9 (FDA Carbon)	T4 (FDA TC)	A6 (2205)	F7 (FKM Pharma)	1 (20 micro-inch Ra)	DW (Debris Well)	SO (Seal Only)
	075 (0.75")	J6 (PTFE- Carbon)		A9 (AL6XN)	L7 (Silicone Pharma)	4 (15 micro-inch Ra + EP)		
	087 (0.875")			G2 (C-276)	P2 (FEP/Silicone) ³	A (20 micro-inch Ra + Pass.)		
	100 (1")			W0 (C-22)	P3 (FEP/FKM) ³	D (15 micro-inch Ra + EP + Pass.)		
	112 (1.125")			W3 (B-3)	Q0 (FFKM Pharma)			
	125 (1.25")			5	Z0 (FFKM) ³			
	137 (1.375")				Z2 (Kalrez® 6230) ³			
	150 (1.5")				Z6 (Kalrez® Spectrum 6375) ³			
					Z7 (FFKM USP <88> Class VI) ³			

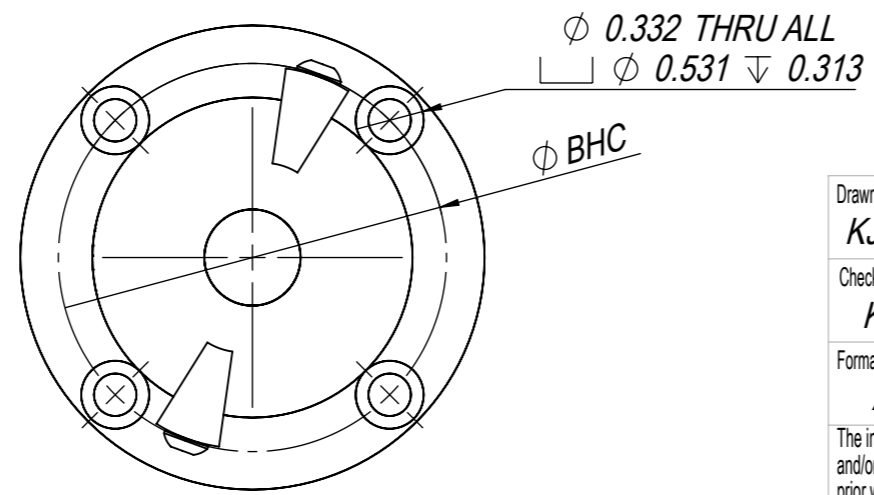
¹ Only applicable to product contact parts.
² Only applicable to product contact surfaces.
³ Elastomers not traceable



Dimensions [Inches]					
Shaft Size	D	d	ID	rd	BHC
0.5	3.375	2.25	1.5	3.188	2.781
0.625	3.5	2.375	1.625	3.313	2.906
0.75	3.625	2.5	1.75	3.438	3.031
0.875	3.75	2.625	1.875	3.563	3.156
1	3.875	2.75	2	3.688	3.281
1.125	4	2.875	2.125	3.813	3.406
1.25	4.125	3	2.25	3.938	3.531
1.375	4.25	3.125	2.375	4.063	3.656
1.5	4.375	3.25	2.5	4.188	3.781

Bill of Materials		
Item Number	Description	Material
1	Rotary Holder*	See seal code
2	Set Screw	Type 304
3	Drive Pin	Type 316
4	Coil Spring	Type 301/302
5	Guide Pin	Type 316
6	Rotary Face*	See seal code
7	Static Face*	See seal code
8	Gland Ring*	Type 316L
9	O-Rings*	See seal code
10	Setup Clip	Aluminum
11	Setup Clip Screw	Type 304
12	Debris Well	See seal code
13	Debris Well Screws	Type 304
-	*Certificate of Traceability	-
-	Specification & Spare Parts List	-

Refer to 13-0072 for complete parts list and specification.



Drawn by KJW	Date 2010-03-24	Description SDRG 0.5" - 1.5"				
Checked by KJW	Approved by KJW	Applicable to -				
Format A3	Scale 2:3	Weight (kg) -	Material See Table	Drawing No. 13-0156	Page 2(2)	Rev. 5

The information contained herein is confidential and proprietary information belonging exclusively to Roplan Sales AB and/or its subsidiary companies, and shall not be used or reproduced in any manner, or disclosed to others without the prior written permission of Roplan Sales AB, or a subsidiary company thereof.

此处所包含信息专属于 Roplan Sales AB 及其附属公司，未经 Roplan Sales AB 及其附属公司书面许可，不得使用或以任何方式转载。