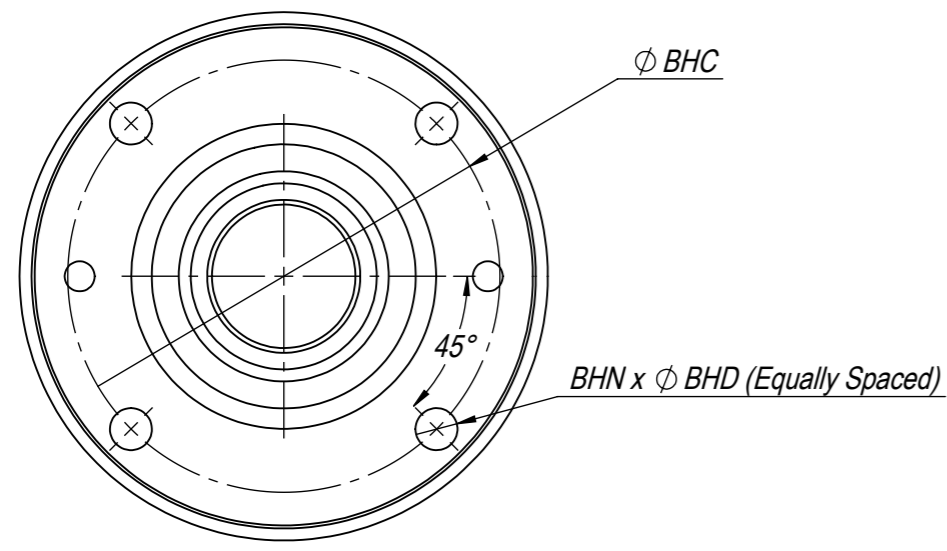
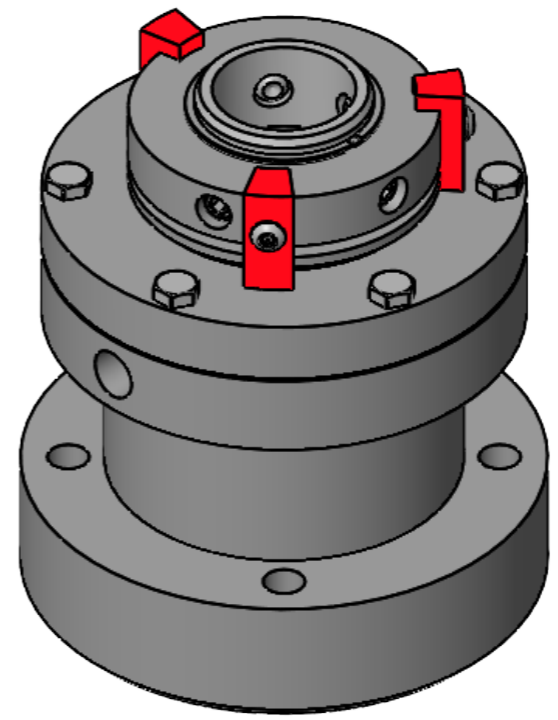
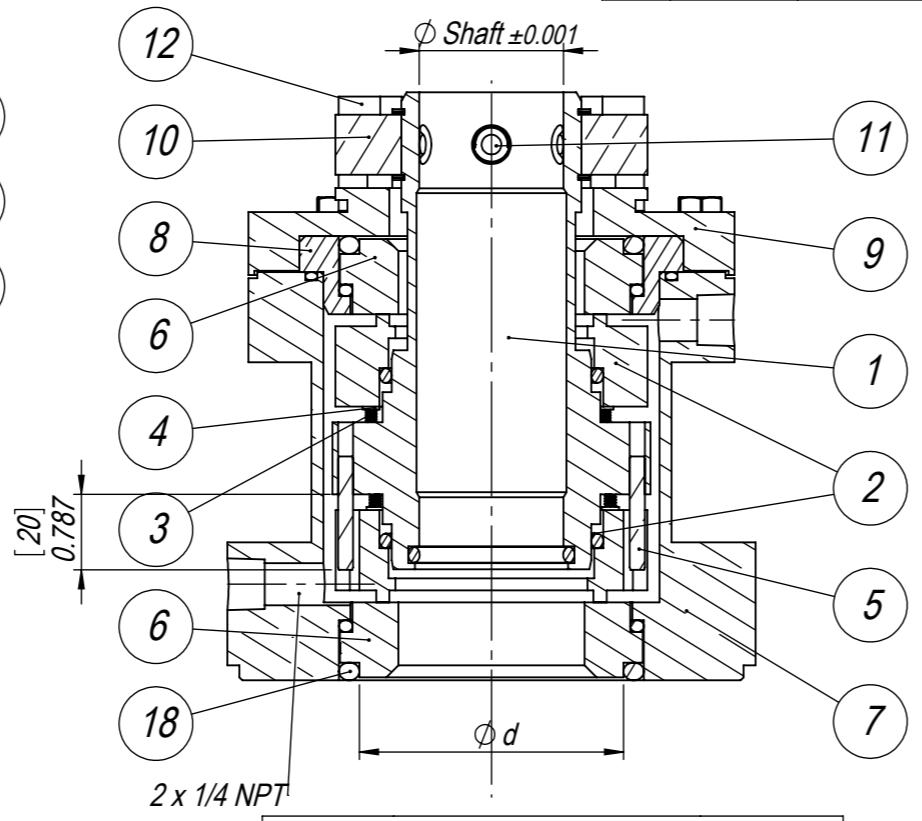
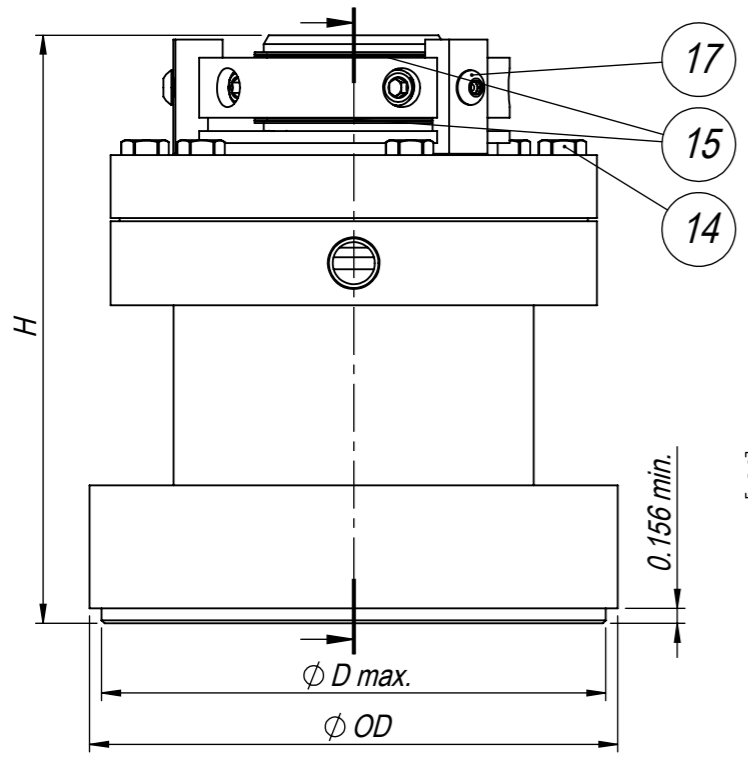


Ch.No	Change	Date	Made by	Check. by
6	Added E1 and F1 elastomers to seal code.	2023-12-18	KAV	KJW
7	Removed Z7 elastomer from seal code. Updated surface finish 0 (was) 32.	2024-01-09	KAV	KAV



Type	Size	Rotary Face	Stationary Face	Metal ¹	Secondary Seals ⁶	Surface Finish ² ⁷	Options
DDRA	xxx	xx	xx	xx	xx	x	xx
	062 (0.625") : 700 (7")	C3 (21CFR Carbon) C9 (21CFR Carbon)	S6 (21CFR SiC) T4 (21CFR WC-Ni)	A4 (316L) G2 (C-267) A9 (AL6XN) A6 (2205) W0 (C-22) W3 (B-3)	E1 (EPDM - FDA) ³ E7 (EPDM Biopharm) ⁶ F0 (FKM) ³ F1 (FKM - FDA) ³ F7 (FKM Biopharm) L7 (Silicone Biopharm) Q0 (FFKM Biopharm) Z0 (FFKM) ³	0 (30 μ -inch Ra) 1 (20 μ -inch Ra) 4 (15 μ -inch Ra + EP) A (20 μ -inch Ra + Pass.) D (15 μ -inch Ra + EP + Pass.)	--

¹ Only applicable to product contact parts. All product contact parts traceable.
² Only applicable to product contact surfaces.
³ Not traceable.



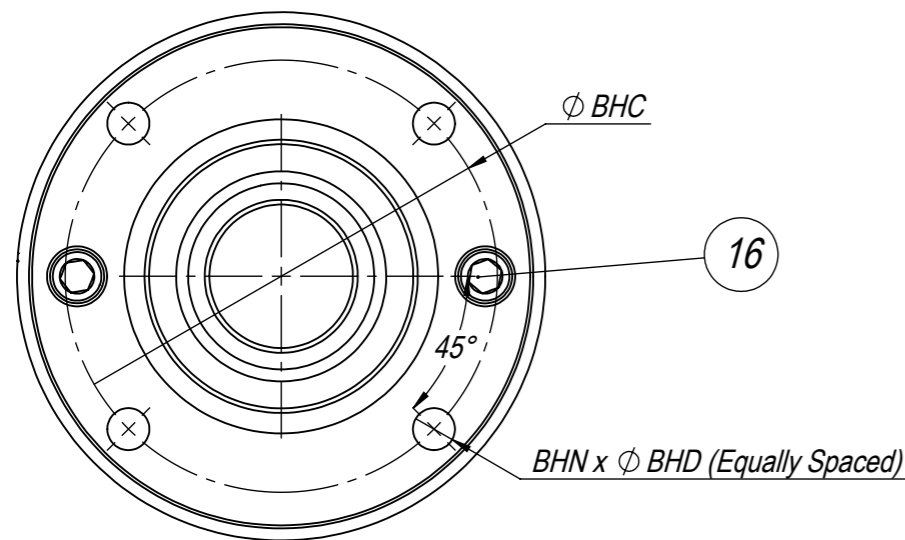
Dimensions [Inches]							
Shaft Size	d	D	OD	H	BHC	BHD	BHN
0.625	1.875	4.375	4.625		3.625		
0.75	2	4.5	4.75		3.75		
0.875	2.125	4.625	4.875		3.875		
1	2.25	4.75	5		4		
1.125	2.375	4.875	5.125		4.125		
1.25	2.5	5	5.25		4.25	0.4375	
1.375	2.625	5.125	5.375		4.375		
1.5	2.75	5.25	5.5		4.5		4
1.625	2.875	5.375	5.625	6.124	4.625		
1.75	3	5.5	5.75		4.75		
1.875	3.125	5.625	5.875		4.875		
2	3.25	6	6.25		5.25		
2.25	3.5	6.25	6.5		5.5		
2.5	3.75	6.5	6.75		5.75		
2.75	4	6.75	7		6		
3	4.25	7.25	7.5		6.5		
3.25	4.5	7.5	7.75		6.75		
3.5	4.75	7.75	8		7		
3.75	5	8	8.25		7.25		6
4	5.25	8.25	8.5		7.5		
4.25	5.5	8.5	8.75		7.75		
4.5	5.75	8.75	9		8	0.5625	
4.75	6	9	9.25		8.25		
5	6.25	9.25	9.5		8.5		
5.25	6.5	9.5	9.75	6.623	8.75		
5.5	6.75	9.75	10		9		
5.75	7	10	10.25		9.25		
6	7.25	10.25	10.5		9.5		10
6.25	7.5	10.5	10.75		9.75		
6.5	7.75	10.75	11		10		
6.75	8	11	11.25		10.25		
7	8.25	11.25	11.5		10.5		

Bill of Materials		
Item Number	Description	Material
1	Rotary Holder	See seal code
2	Rotary Face	See seal code
3	Coil Spring	Alloy C-276
4	Guide Pin	Type 316 SS
5	Drive Pin	Type 316 SS
6	Static Face	See seal code
7	Housing	Type 316L SS
8	Static Holder	Type 316L SS
9	Cover	Type 316L SS
10	Sleeve	Type 316L SS
11	Set Screws	Type 18/8 SS
12	Setup Clip	Aluminum
14	Screw	Type 18/8 SS
15	Retaining Ring	Type 302 SS
17	Setup Clip Screw	Type 18/8 SS
18	O-Rings	See seal code
-	Certificate of Traceability	-
-	Specification & Spare Parts List	-

Refer to 13-0235 for complete parts list and specification.

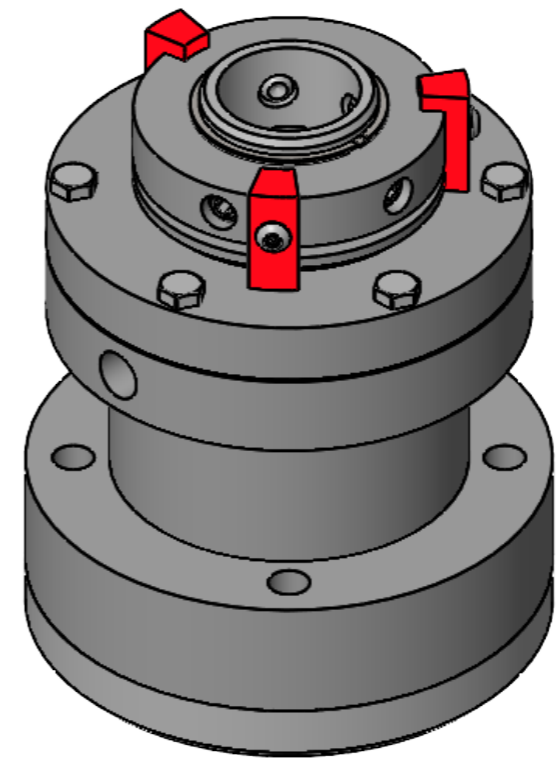
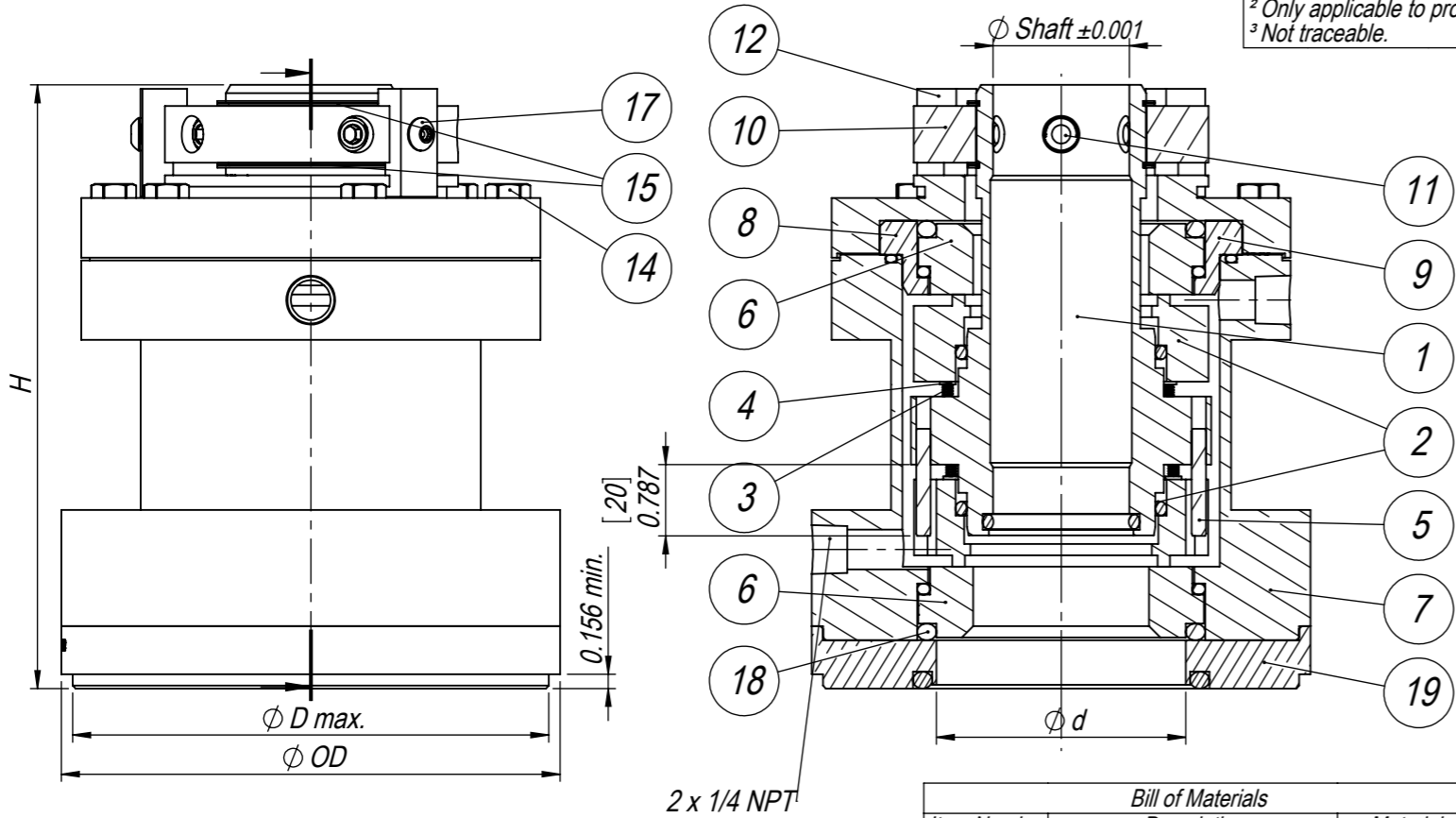
Drawn by KJW	Date 2009-08-27	Description DDRA 5/8" - 7"				
Checked by KJW	Approved by KJW	Applicable to -				
Format A3	Scale 1:2	Weight (kg) 18.800	Material -	Drawing No. 13-0085	Page 1(3)	Rev. 7
The information contained herein is confidential and proprietary information belonging exclusively to Roplan Sales AB and/or its subsidiary companies, and shall not be used or reproduced in any manner, or disclosed to others without the prior written permission of Roplan Sales AB, or a subsidiary company thereof.			此文件包含信息专属于 Roplan Sales AB 及其附属公司，未经 Roplan Sales AB 及其附属公司书面许可，不得使用或以任何方式转载。			

Ch.No	Change	Date	Made by	Check. by
6	Added E1 and F1 elastomers to seal code.	2023-12-18	KAV	KJW
7	Removed Z7 elastomer from seal code. Updated surface finish 0 (was) 32.	2024-01-09	KAV	KAV



Seal Code △ 6							
Type	Size	Rotary Face	Stationary Face	Metal ¹	Secondary Seals	Surface Finish ²	Options
DDRA	xxx	xx	xx	xx	xx	x	xx
	062 (0.625") 700 (7")	C3 (21CFR Carbon) C9 (21CFR Carbon)	S6 (21CFR SiC) T4 (21CFR WC-Ni)	A4 (316L) G2 (C-267) A9 (AL6XN) A6 (2205) W0 (C-22) W3 (B-3)	E1 (EPDM - FDA) ³ 6 E7 (EPDM Biopharm) F0 (FKM) ³ F1 (FKM - FDA) ³ F7 (FKM Biopharm) L7 (Silicone Biopharm) Q0 (FFKM Biopharm) Z0 (FFKM) ³	0 (30 µ-inch Ra) 1 (20 µ-inch Ra) 4 (15 µ-inch Ra + EP) A (20 µ-inch Ra + Pass.) D (15 µ-inch Ra + EP + Pass.)	GL (Gland Ring)

¹ Only applicable to product contact parts. All product contact parts traceable.
² Only applicable to product contact surfaces.
³ Not traceable.



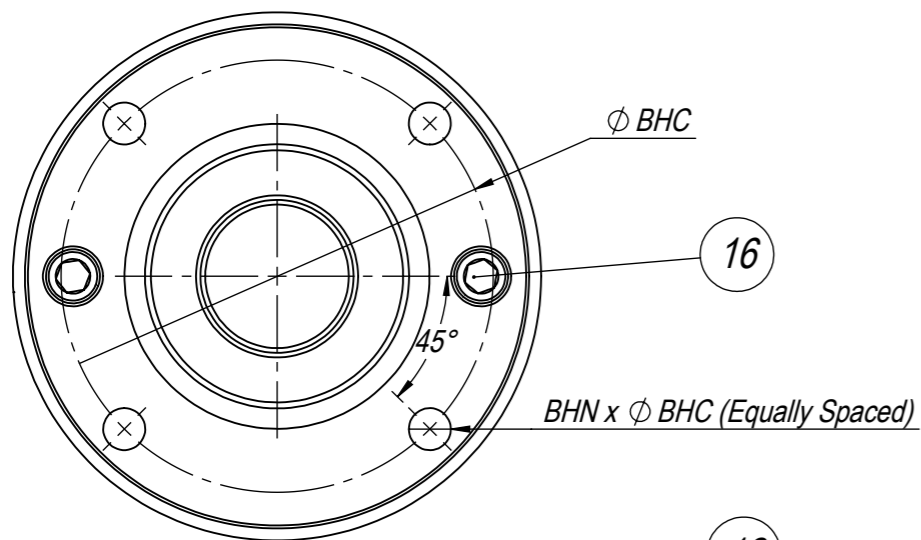
Dimensions [Inches]							
Shaft Size	d	D	OD	H	BHC	BHD	BHN
0.625	1.875	4.375	4.625		3.625		
0.75	2	4.5	4.75		3.75		
0.875	2.125	4.625	4.875		3.875		
1	2.25	4.75	5		4		
1.125	2.375	4.875	5.125		4.125		
1.25	2.5	5	5.25		4.25	0.4375	
1.375	2.625	5.125	5.375		4.375		
1.5	2.75	5.25	5.5	6.655	4.5		4
1.625	2.875	5.375	5.625		4.625		
1.75	3	5.5	5.75		4.75		
1.875	3.125	5.625	5.875		4.875		
2	3.25	6	6.25		5.25		
2.25	3.5	6.25	6.5		5.5		
2.5	3.75	6.5	6.75		5.75		
2.75	4	6.75	7		6		
3	4.25	7.25	7.5	6.718	6.5		
3.25	4.5	7.5	7.75		6.75		
3.5	4.75	7.75	8		7		
3.75	5	8	8.25		7.25		6
4	5.25	8.25	8.5		7.5		
4.25	5.5	8.5	8.75		7.75		
4.5	5.75	8.75	9		8	0.5625	
4.75	6	9	9.25		8.25		
5	6.25	9.25	9.5		8.5		
5.25	6.5	9.5	9.75	7.217	8.75		
5.5	6.75	9.75	10		9		
5.75	7	10	10.25		9.25		
6	7.25	10.25	10.5		9.5		10
6.25	7.5	10.5	10.75		9.75		
6.5	7.75	10.75	11		10		
6.75	8	11	11.25		10.25		
7	8.25	11.25	11.5		10.5		

Bill of Materials		
Item Number	Description	Material
1	Rotary Holder	See seal code
2	Rotary Face	See seal code
3	Coil Spring	Alloy C-276
4	Guide Pin	Type 316 SS
5	Drive Pin	Type 316 SS
6	Static Face	See seal code
7	Housing	Type 316L SS
8	Static Holder	Type 316L SS
9	Cover	Type 316L SS
10	Sleeve	Type 316L SS
11	Set Screws	Type 18/8 SS
12	Setup Clip	Aluminum
14	Screw	Type 18/8 SS
15	Retaining Ring	Type 302 SS
17	Setup Clip Screw	Type 18/8 SS
18	O-Rings	See seal code
19	Gland Ring	See seal code

Drawn by KJW	Date 2009-08-27	Description DDRA 5/8" - 7"		
Checked by KJW	Approved by KJW	Applicable to -		
Format A3	Scale 1:2	Weight (kg) 18.800	Material -	Drawing No. 13-0085
Certificate of Traceability				Page 2(3)
Specification & Spare Parts List				Rev. 7

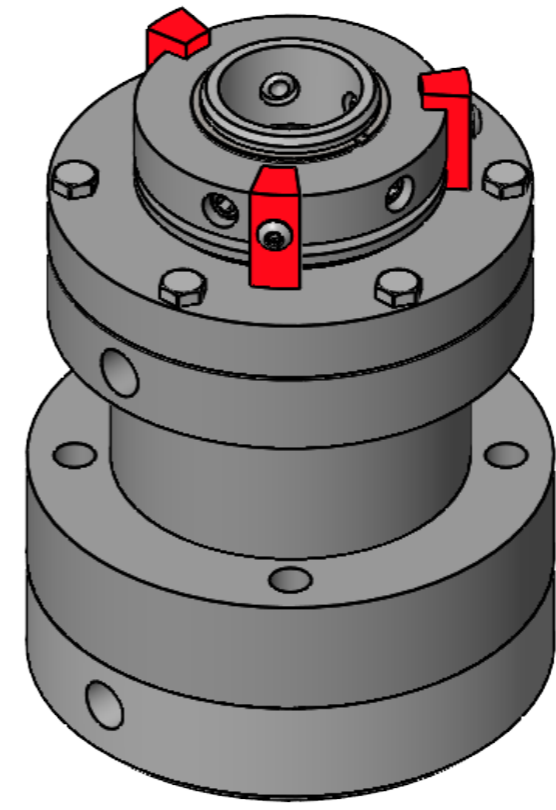
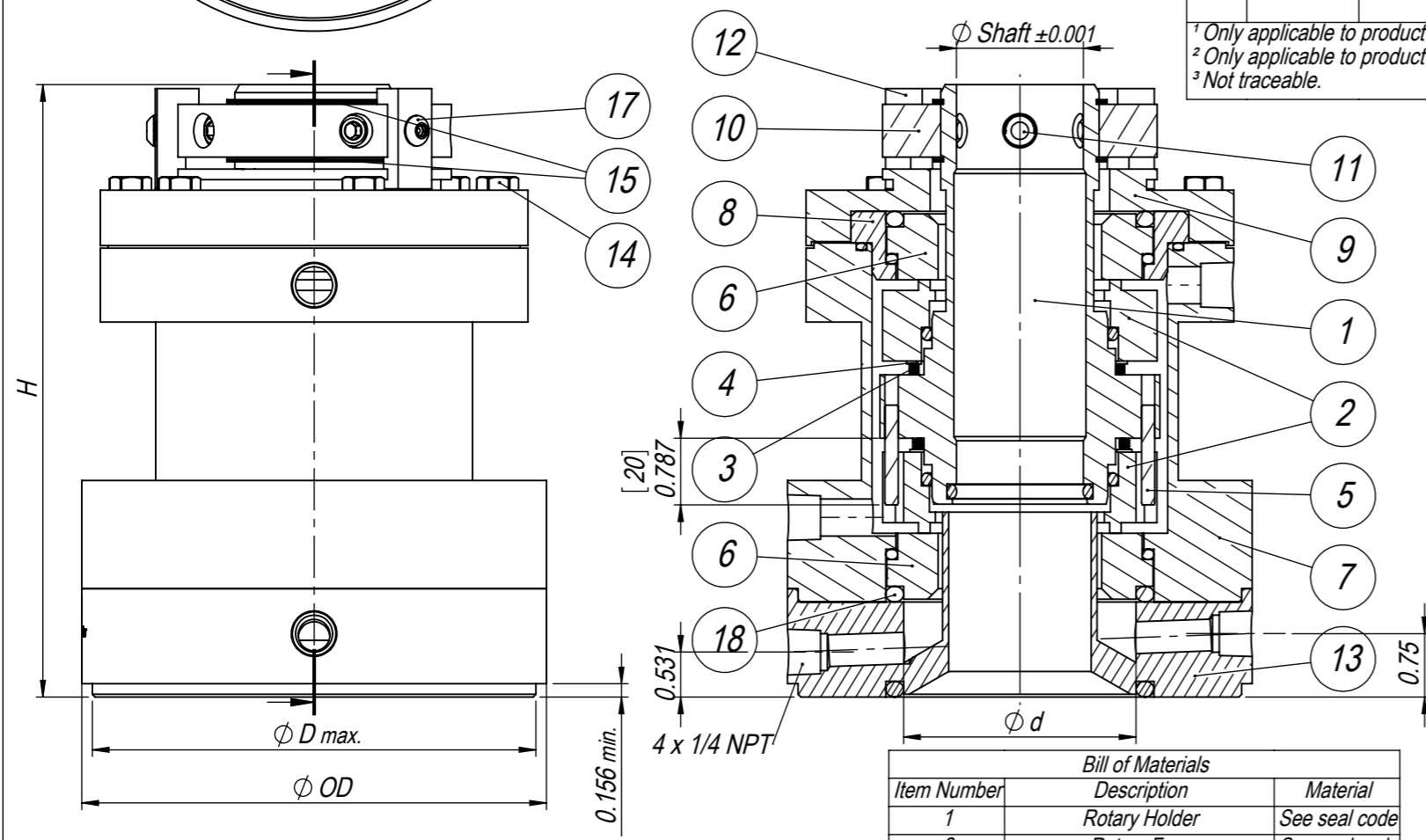
Refer to 13-0235 for complete parts list and specification.
 The information contained herein is confidential and proprietary information belonging exclusively to Roplan Sales AB and/or its subsidiary companies, and shall not be used or reproduced in any manner, or disclosed to others without the prior written permission of Roplan Sales AB, or a subsidiary company thereof.
 此文件包含信息专属于 Roplan Sales AB 及其附属公司，未经 Roplan Sales AB 及其附属公司书面许可，不得使用或在任何方式转载。

Ch.No	Change	Date	Made by	Check. by
6	Added E1 and F1 elastomers to seal code.	2023-12-18	KAV	KJW
7	Removed Z7 elastomer from seal code. Updated surface finish 0 (was) 32.	2024-01-09	KAV	KAV



Type	Size	Rotary Face	Stationary Face	Metal ¹	Secondary Seals	Surface Finish ²	Options
DDRA	xxx	xx	xx	xx	xx	x	xx
	062 (0.625") 700 (7")	C3 (21CFR Carbon) C9 (21CFR Carbon)	S6 (21CFR SiC) T4 (21CFR WC-Ni)	A4 (316L) G2 (C-267) A9 (AL6XN) A6 (2205) W0 (C-22) W3 (B-3)	E1 (EPDM - FDA) ³ E7 (EPDM Biopharm) F0 (FKM) ³ F1 (FKM - FDA) ³ F7 (FKM Biopharm) L7 (Silicone Biopharm) Q0 (FFKM Biopharm) Z0 (FFKM) ³	0 (30 μ -inch Ra) 1 (20 μ -inch Ra) 4 (15 μ -inch Ra + EP) A (20 μ -inch Ra + Pass.) D (15 μ -inch Ra + EP + Pass.)	DW (Debris Well)

¹ Only applicable to product contact parts. All product contact parts traceable.
² Only applicable to product contact surfaces.
³ Not traceable.



Dimensions [Inches]							
Shaft Size	d	D	OD	H	BHC	BHD	BHN
0.625	1.875	4.375	4.625		3.625		
0.75	2	4.5	4.75		3.75		
0.875	2.125	4.625	4.875		3.875		
1	2.25	4.75	5		4		
1.125	2.375	4.875	5.125		4.125		
1.25	2.5	5	5.25		4.25	0.4375	
1.375	2.625	5.125	5.375		4.375		
1.5	2.75	5.25	5.5		4.5		4
1.625	2.875	5.375	5.625	7.249	4.625		
1.75	3	5.5	5.75		4.75		
1.875	3.125	5.625	5.875		4.875		
2	3.25	6	6.25		5.25		
2.25	3.5	6.25	6.5		5.5		
2.5	3.75	6.5	6.75		5.75		
2.75	4	6.75	7		6		
3	4.25	7.25	7.5		6.5		
3.25	4.5	7.5	7.75		6.75		
3.5	4.75	7.75	8		7		6
3.75	5	8	8.25		7.25		
4	5.25	8.25	8.5		7.5		
4.25	5.5	8.5	8.75		7.75		
4.5	5.75	8.75	9		8	0.5625	
4.75	6	9	9.25		8.25		
5	6.25	9.25	9.5		8.5		
5.25	6.5	9.5	9.75	7.748	8.75		
5.5	6.75	9.75	10		9		
5.75	7	10	10.25		9.25		10
6	7.25	10.25	10.5		9.5		
6.25	7.5	10.5	10.75		9.75		
6.5	7.75	10.75	11		10		
6.75	8	11	11.25		10.25		
7	8.25	11.25	11.5		10.5		

Bill of Materials		
Item Number	Description	Material
1	Rotary Holder	See seal code
2	Rotary Face	See seal code
3	Coil Spring	Alloy C-276
4	Guide Pin	Type 316 SS
5	Drive Pin	Type 316 SS
6	Static Face	See seal code
7	Housing	Type 316L SS
8	Static Holder	Type 316L SS
9	Cover	Type 316L SS
10	Sleeve	Type 316L SS
11	Set Screws	Type 18/8 SS
12	Setup Clip	Aluminum
13	Debris Well	See seal code
14	Screw	Type 18/8 SS
15	Retaining Ring	Type 302 SS
16	Screw	Type 18/8 SS
17	Setup Clip Screw	Type 18/8 SS
18	O-Rings	See seal code

Drawn by	Date	Description
KJW	2009-08-27	DDRA 5/8" - 7"
Checked by	Approved by	Applicable to
KJW	KJW	-
Format	Scale	Weight (kg)
A3	1:2	18.800

Roplan MECHANICAL SEALS		
Drawing No.	Page	Rev.
13-0085	3(3)	7

The information contained herein is confidential and proprietary information belonging exclusively to Roplan Sales AB and/or its subsidiary companies, and shall not be used or reproduced in any manner, or disclosed to others without the prior written permission of Roplan Sales AB, or a subsidiary company thereof.

此文件包含信息专属于 Roplan Sales AB 及其附属公司，未经 Roplan Sales AB 及其附属公司书面许可，不得使用或在任何方式转载。

Refer to 13-0235 for complete parts list and specification.