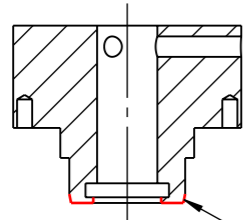


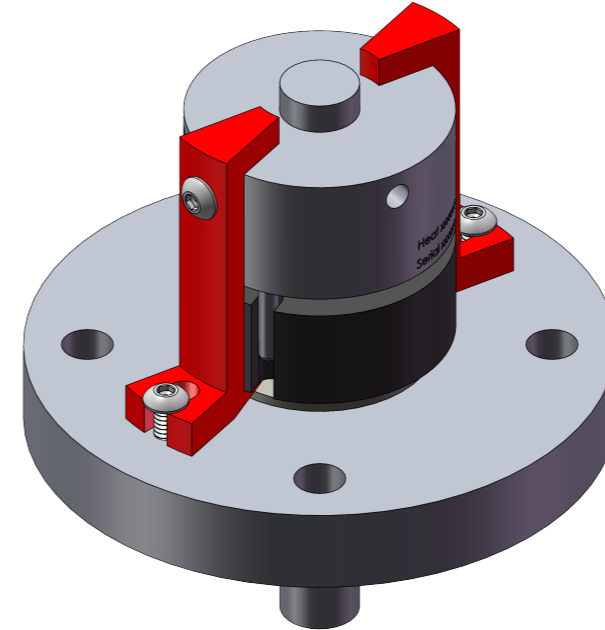
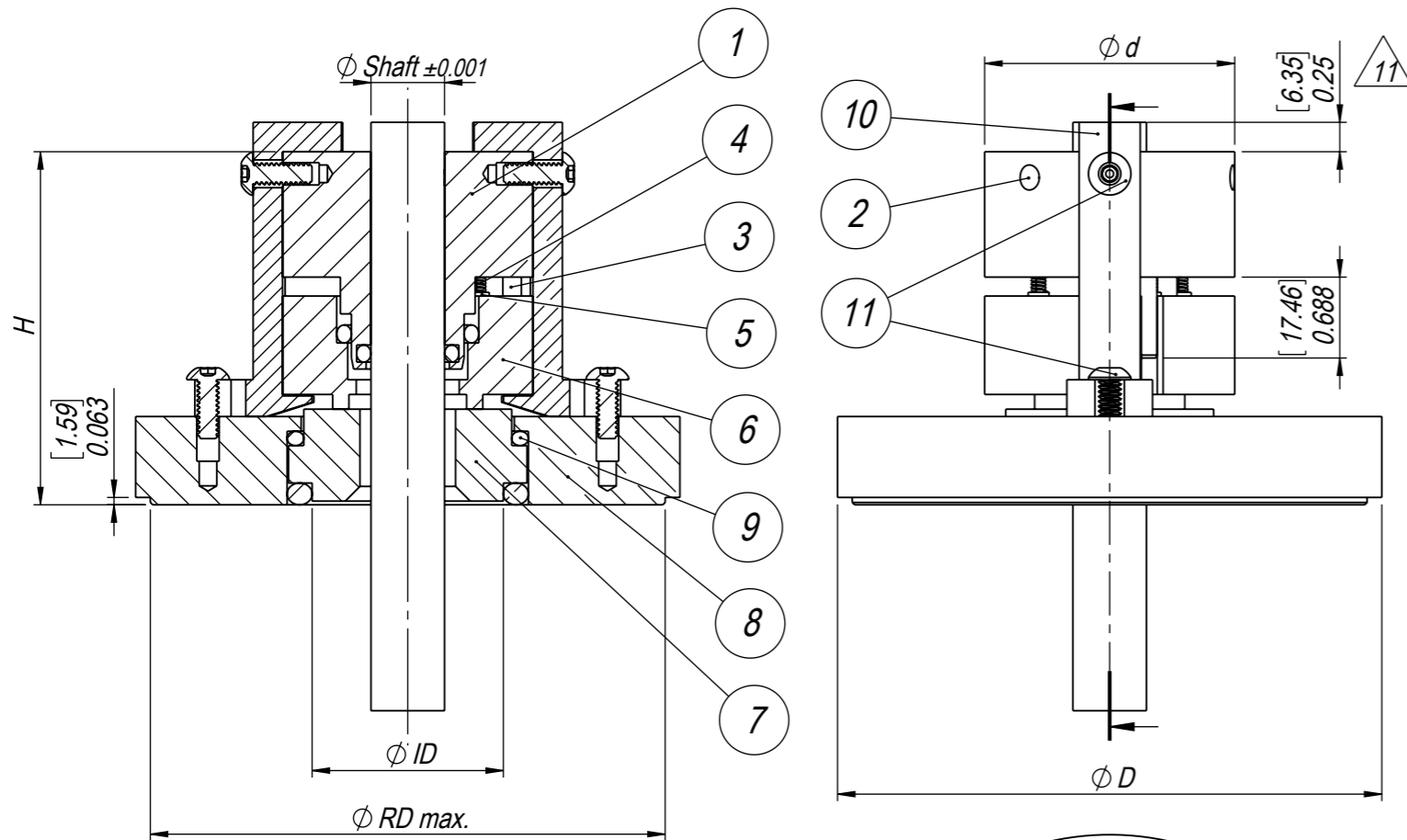
Ch.No	Change	Date	Made by	Check. by
10	Removed Z5 and added A6, W0, W3 and Z0 to seal code.	2022-05-24	KAV	KJW
11	Added Page 3 to show debris well option DF with threaded ferrules. Added dimension.	2023-08-15	KAV	KJW

Type	Size	Rotary Face	Stationary Face	Seal Code				
				Metal*	Elastomers	Surface Finish**	Configuration	Option
SDRA	050 (0.5")	C3 (Carbon)	S6 (SiC)	A4 (316L)	E7 (EPDM Pharma)***	0 (32 micro-inch Ra)	--	--
	062 (0.625")	C9 (Carbon)	T4 (WC-Ni)	A6 (2205)	F7 (FKM Pharma)***	1 (20 micro-inch Ra)		SO (Seal Only)
	...	J6 (PTFE- Carbon)		A9 (AL6XN)	L7 (Silicone Pharma)***	4 (15 micro-inch Ra + EP)		
	287 (2.875")			G2 (C-276)	P2 (FEP Silicone)	5 (10 micro-inch Ra + Pass.)		
	300 (3")			W0 (C-22)	P3 (FEP FKM)	A (20 micro-inch Ra + Pass.)		
	325 (3.25")			W3 (B-3)	Q0 (FFKM Pharma)***	D (15 micro-inch Ra + EP + Pass.)		
	...				Z0 (FFKM)	E (10 micro-inch Ra + EP + Pass.)		
	675 (6.75")				Z2 (Kalrez® 6230)			
	700 (7")				Z6 (Kalrez® Spectrum 6375)			
					Z7 (FFKM USP <88> Class VI)			



Product Contact Surfaces

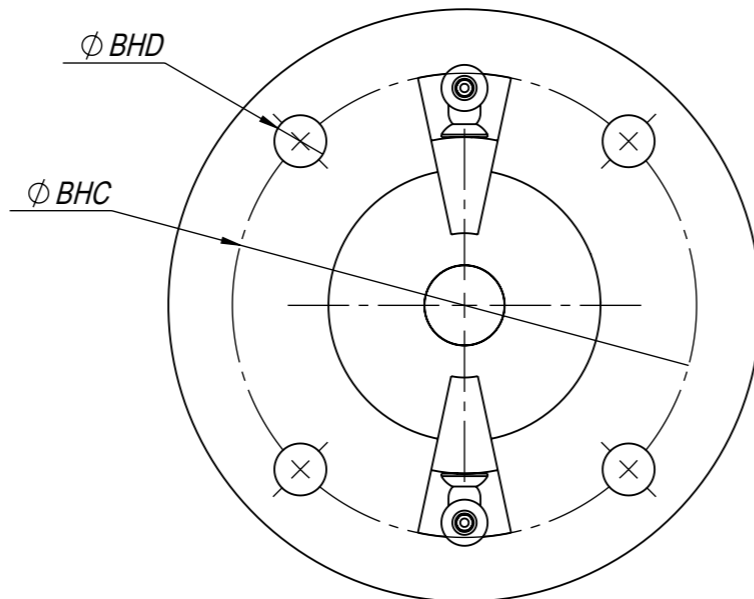
*Only applicable to product contact parts.
 **Only applicable to product contact surfaces.
 ***Traceable.




Shaft Size	D	d	H	ID	RD	BHD	BHC
0.5	4.5	2		1.5	4.25		3.5
0.625	4.625	2.125		1.625	4.375		3.625
0.75	4.75	2.25		1.75	4.5		3.75
0.875	4.875	2.375		1.875	4.625		3.875
1	5	2.5		2	4.75		4
1.125	5.125	2.625		2.125	4.875		4.125
1.25	5.25	2.75		2.25	5	0.406	4.25
1.375	5.375	2.875		2.375	5.125		4.375
1.5	5.5	3		2.5	5.25		4.5
1.625	5.625	3.125		2.625	5.375		4.625
1.75	5.75	3.25		2.75	5.5		4.75
1.875	5.875	3.375	3	2.875	5.625		4.875
2	6	3.5		3	5.75		5
2.125	6.125	3.625		3.125	5.875		5.125
2.25	6.25	3.75		3.25	6		5.25
2.375	6.375	3.875		3.375	6.125		5.375
2.5	6.5	4		3.5	6.25		5.5
2.625	6.625	4.125		3.625	6.375		5.625
2.75	6.75	4.25		3.75	6.5		5.75
2.875	6.875	4.375		3.875	6.625		5.875
3	7	4.5		4	6.75		6
3.25	7.25	5		4.25	7		6.25
3.5	7.5	5.25		4.5	7.25		6.5
3.75	7.75	5.5		4.75	7.5		6.75
4	8	5.75		5	7.75	0.531	7
4.25	8.25	6		5.25	8		7.25
4.5	8.5	6.25		5.5	8.25		7.5
4.75	8.75	6.5		5.75	8.5		7.75
5	9	6.75		6	8.75		8
5.25	9.25	7		6.25	9		8.25
5.5	9.5	7.25	3.25	6.5	9.25		8.5
5.75	9.75	7.5		6.75	9.5		8.75
6	10	7.75		7	9.75		9
6.25	10.25	8		7.25	10		9.25
6.5	10.5	8.25		7.5	10.25		9.5
6.75	10.75	8.5		7.75	10.5		9.75
7	11	8.75		8	10.75		10

Position	Description	Material
1	Rotary Holder*	See seal code
2	Set Screw	Type 18/8
3	Drive Pin	Type 316
4	Coil Spring	Type 316
5	Guide Pin	Type 316
6	Rotary Face*	See seal code
7	Static Face*	See seal code
8	Gland Ring	Type 316L
9	O-Rings*	See seal code
10	Setup Clip	Aluminum
11	Setup Clip Screw	Type 18/8
-	*Certificate of Traceability	-
-	Specification & Spare Parts List	-

Use 13-0072 for BOM and specification.



Drawn by KJW Checked by KJW Format A3 Reference -	Date 2009-07-10 Approved by KJW Scale 1:1.5 US	Description SDRA 1/2" - 7" Applicable to -	Material SEE TABLE 
Drawing No. 13-0025		Page 1(3)	Rev. 11

This document may not, without our permission, be copied, shown or handed out to competitors or any other unauthorized persons.

Ch.No	Change	Date	Made by	Check. by
10	Removed Z5 and added A6, W0, W3 and Z0 to seal code.	2022-05-24	KAV	KJW
11	Added Page 3 to show debris well option DF with threaded ferrules. Added dimension.	2023-08-15	KAV	KJW

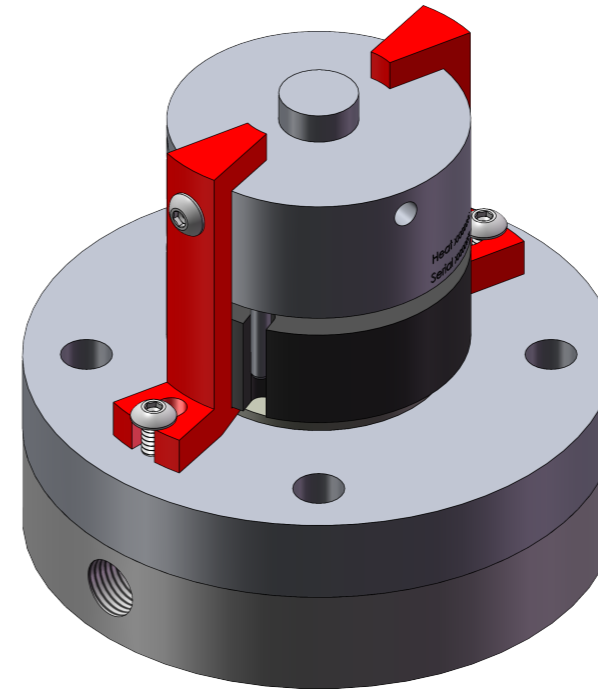
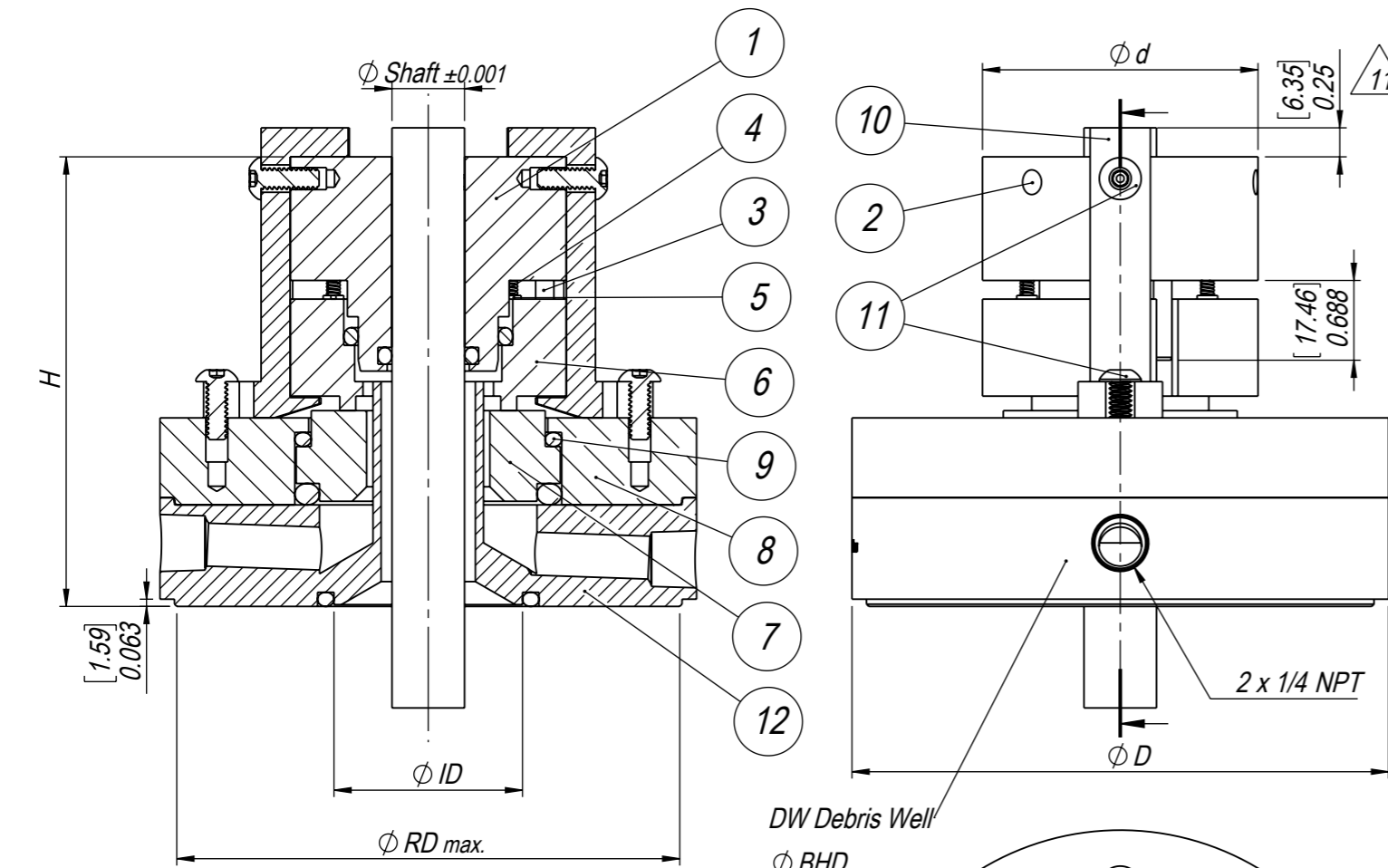
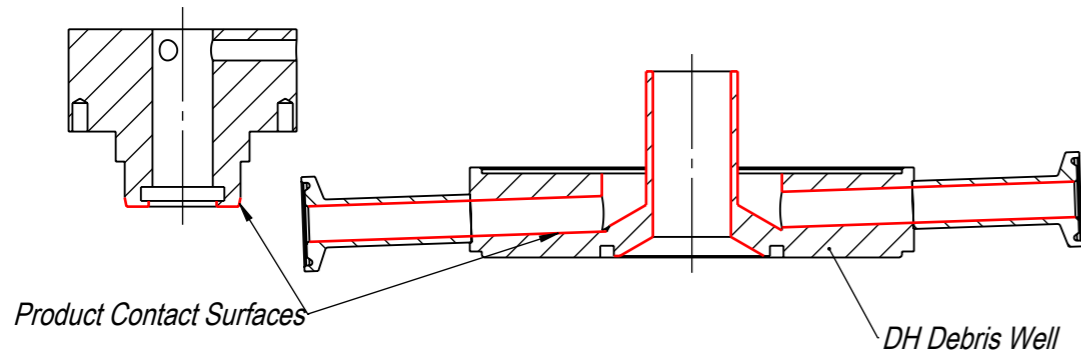
Type	Size	Rotary Face	Stationary Face	Seal Code				
				Metal*	Elastomers	Surface Finish**	Configuration	Option
SDRA	050 (0.5")	C3 (Carbon)	S6 (SiC)	A4 (316L)	E7 (EPDM Pharma)	0 (32 micro-inch Ra)	--	--
	062 (0.625")	C9 (Carbon)	T4 (WC-Ni)	G2 (C-276)	F7 (FKM Pharma)	1 (20 micro-inch Ra)	DW (Debris Well)	SO (Seal Only)
	∴	J6 (PTFE- Carbon)		A9 (AL6XN)	L7 (Silicone Pharma)	4 (15 micro-inch Ra + EP)	DH (Debris Well)†	CC (Custom Connections)
	287 (2.875")			A6 (2205)	P2 (FEP Silicone)***	5 (10 micro-inch Ra + Pass.)		
	300 (3")			W0 (C-22)	P3 (FEP FKM)***	A (20 micro-inch Ra + Pass.)		
	325 (3.25")			W3 (B-3)	Q0 (FFKM Pharma)	D (15 micro-inch Ra + EP + Pass.)		
	∴				Z0 (FFKM)***	E (10 micro-inch Ra + EP + Pass.)		
	675 (6.75")				Z2 (Kalrez® 6230)***			
	700 (7")				Z6 (Kalrez® Spectrum 6375)***			
					Z7 (FFPM USP <88> Class VI)***			

*Only applicable to product contact parts.

**Only applicable to product contact surfaces.

***Elastomers not traceable.


†With hygienic connections (1/2"x1 3/4" hygienic clamp). Other connection types or lengths may be specified on order (Option CC).



Shaft Size	D	d	H	ID	RD	BHD	BHC
0.5	4.5	2.25		1.5	4.25		3.5
0.625	4.625	2.375		1.625	4.375		3.625
0.75	4.75	2.5		1.75	4.5		3.75
0.875	4.875	2.625		1.875	4.625		3.875
1	5	2.75		2	4.75		4
1.125	5.125	2.875		2.125	4.875	0.406	4.125
1.25	5.25	3		2.25	5		4.25
1.375	5.375	3.125		2.375	5.125		4.375
1.5	5.5	3.25		2.5	5.25		4.5
1.625	5.625	3.375		2.625	5.375		4.625
1.75	5.75	3.5		2.75	5.5		4.75
1.875	5.875	3.625	3.875	2.875	5.625		4.875
2	6	3.75		3	5.75		5
2.125	6.125	3.875		3.125	5.875		5.125
2.25	6.25	4		3.25	6		5.25
2.375	6.375	4.125		3.375	6.125		5.375
2.5	6.5	4.25		3.5	6.25		5.5
2.625	6.625	4.375		3.625	6.375		5.625
2.75	6.75	4.5		3.75	6.5		5.75
2.875	6.875	4.75		3.875	6.625		5.875
3	7	5		4	6.75		6
3.25	7.25	5.25		4.25	7		6.25
3.5	7.5	5.5		4.5	7.25		6.5
3.75	7.75	5.75		4.75	7.5		6.75
4	8	6		5	7.75	0.531	7
4.25	8.25	6.25		5.25	8		7.25
4.5	8.5	6.5		5.5	8.25		7.5
4.75	8.75	6.75		5.75	8.5		7.75
5	9	7		6	8.75		8
5.25	9.25	7.25	4.125	6.25	9		8.25
5.5	9.5	7.5		6.5	9.25		8.5
5.75	9.75	7.75		6.75	9.5		8.75
6	10	8		7	9.75		9
6.25	10.25	8.25		7.25	10		9.25
6.5	10.5	8.5		7.5	10.25		9.5
6.75	10.75	8.75		7.75	10.5		9.75
7	11	9		8	10.75		10

Position	Description	Material
1	Rotary Holder*	See seal code
2	Set Screw	Type 18/8
3	Drive Pin	Type 316
4	Coil Spring	Type 316
5	Guide Pin	Type 316
6	Rotary Face*	See seal code
7	Static Face*	See seal code
8	Gland Ring	Type 316L
9	O-Rings*	See seal code
10	Setup Clip	Aluminum
11	Setup Clip Screw	Type 18/8
12	Debris Well*	See seal code
-	Debris Well Screws	18/8 SS
-	*Certificate of Traceability	-
-	Specification & Spare Parts List	-

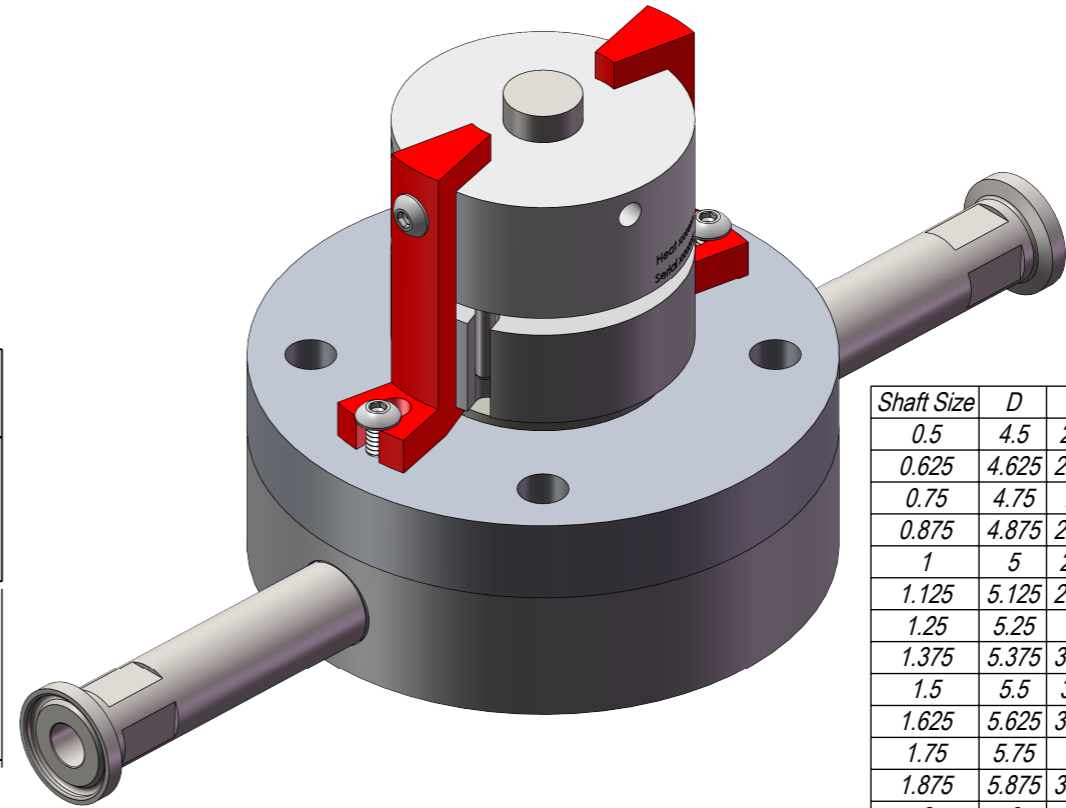
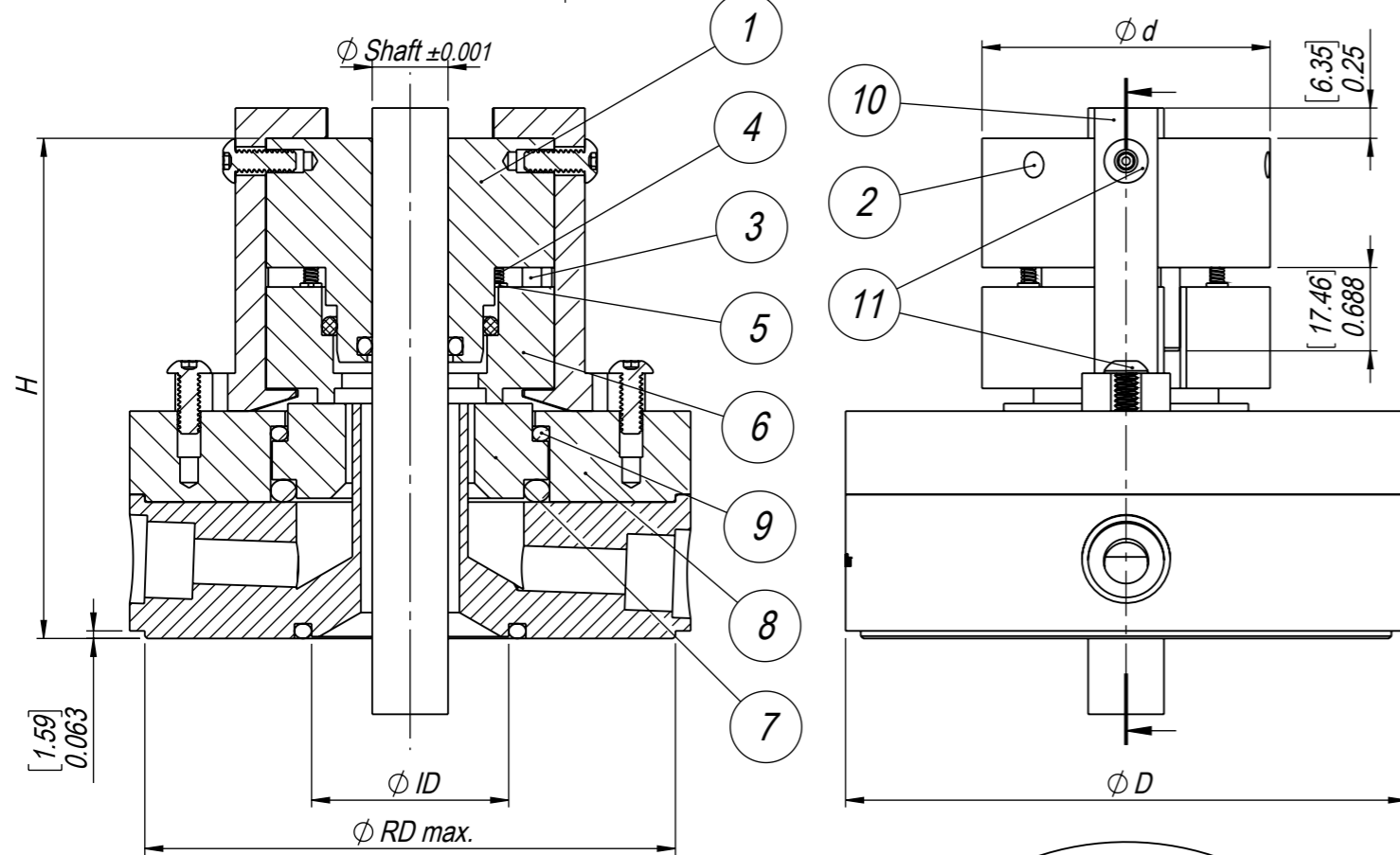
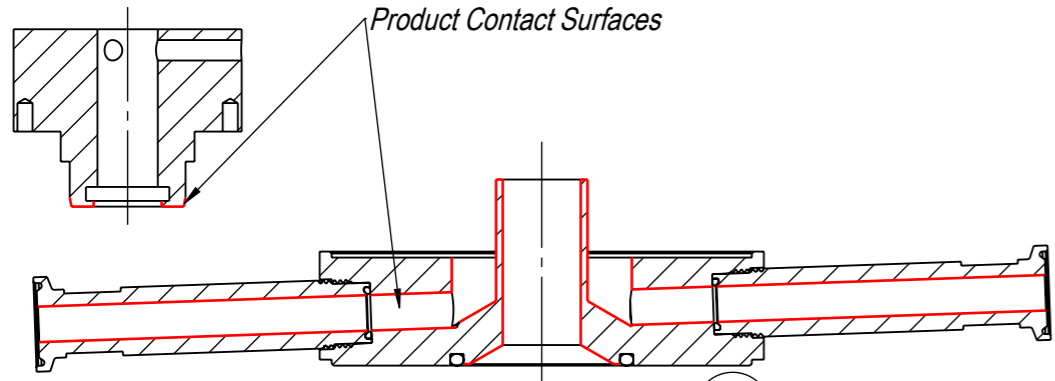
Use 13-0072 for BOM and specification.

Drawn by KJW Checked by KJW Format A3 Reference -	Date 2009-07-10 Approved by KJW Scale 1:1.5 US	Description SDRA 1/2" - 7" Applicable to - This document may not, without our permission, be copied, shown or handed out to competitors or any other unauthorized persons.	Material SEE TABLE  Drawing No. 13-0025 Page 2(3) Rev. 11
---	---	---	--

Ch.No	Change	Date	Made by	Check. by
11	Added Page 3 to show debris well option DF with threaded ferrules.	2023-08-15	KAV	KJW

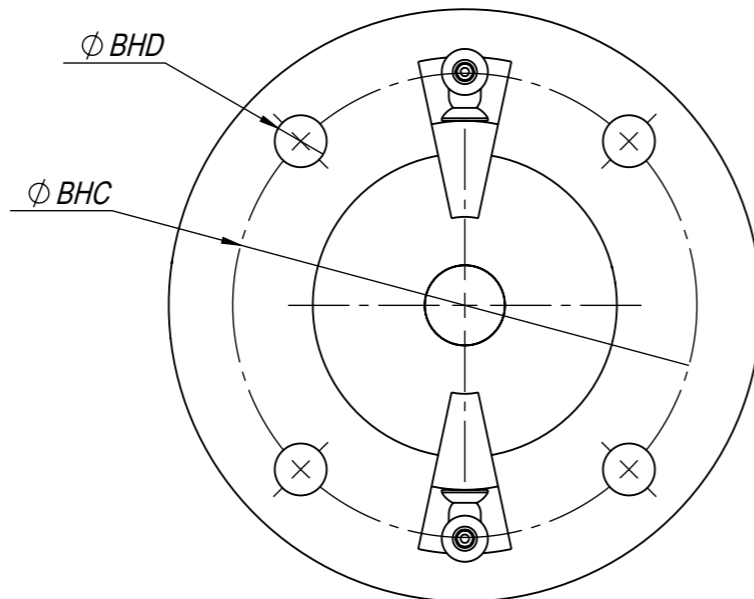
Type	Size	Rotary Face	Stationary Face	Seal Code				
				Metal*	Elastomers	Surface Finish**	Configuration	Option
SDRA	050 (0.5")	C3 (Carbon)	S6 (SiC)	A4 (316L)	E7 (EPDM Pharma)	0 (32 micro-inch Ra)	--	--
	062 (0.625")	C9 (Carbon)	T4 (WC-Ni)	G2 (C-276)	F7 (FKM Pharma)	1 (20 micro-inch Ra)	DF (Debris Well)†	SO (Seal Only)
	287 (2.875")	J6 (PTFE- Carbon)		A9 (AL6XN)	L7 (Silicone Pharma)	4 (15 micro-inch Ra + EP)		
	300 (3")			A6 (2205)	P2 (FEP Silicone)***	5 (10 micro-inch Ra + Pass.)		
				W0 (C-22)	P3 (FEP FKM)***	A (20 micro-inch Ra + Pass.)		
				W3 (B-3)	Q0 (FFKM Pharma)	D (15 micro-inch Ra + EP + Pass.)		
					Z0 (FFKM)***	E (10 micro-inch Ra + EP + Pass.)		
					Z2 (Kalrez® 6230)***			
					Z6 (Kalrez® Spectrum 6375)***			
					Z7 (FFPM USP <88> Class VI)***			


*Only applicable to product contact parts.
 **Only applicable to product contact surfaces.
 ***Elastomers not traceable.
 †Hygienic threaded ferrule sold separately.



Shaft Size	D	d	H	ID	RD	BHD	BHC
0.5	4.5	2.25		1.5	4.25		3.5
0.625	4.625	2.375		1.625	4.375		3.625
0.75	4.75	2.5		1.75	4.5		3.75
0.875	4.875	2.625		1.875	4.625		3.875
1	5	2.75		2	4.75		4
1.125	5.125	2.875		2.125	4.875		4.125
1.25	5.25	3		2.25	5		4.25
1.375	5.375	3.125		2.375	5.125		4.375
1.5	5.5	3.25		2.5	5.25		4.5
1.625	5.625	3.375		2.625	5.375		4.625
1.75	5.75	3.5	4.125	2.75	5.5		4.75
1.875	5.875	3.625		2.875	5.625		4.875
2	6	3.75		3	5.75		5
2.125	6.125	3.875		3.125	5.875		5.125
2.25	6.25	4		3.25	6		5.25
2.375	6.375	4.125		3.375	6.125		5.375
2.5	6.5	4.25		3.5	6.25	0.531	5.5
2.625	6.625	4.375		3.625	6.375		5.625
2.75	6.75	4.5		3.75	6.5		5.75
2.875	6.875	4.75		3.875	6.625		5.875
3	7	5		4	6.75		6

Position	Description	Material
1	Rotary Holder*	See seal code
2	Set Screw	Type 18/8
3	Drive Pin	Type 316
4	Coil Spring	Type 316
5	Guide Pin	Type 316
6	Rotary Face*	See seal code
7	Static Face*	See seal code
8	Gland Ring	Type 316L
9	O-Rings*	See seal code
10	Setup Clip	Aluminum
11	Setup Clip Screw	Type 18/8
12	Debris Well*	See seal code
-	Debris Well Screws	18/8 SS
-	*Certificate of Traceability	-
-	Specification & Spare Parts List	-



Drawn by KJW	Date 2009-07-10	Description SDRA 1/2" - 7"	Material SEE TABLE
Checked by KJW	Approved by KJW	Applicable to -	
Format A3	Scale 1:1.5	Reference -	
This document may not, without our permission, be copied, shown or handed out to competitors or any other unauthorized persons.			Drawing No. 13-0025 Page 3(3) Rev. 11

Use 13-0072 for BOM and specification.