

**MOST COMMON AVAILABLE OPTIONS:**

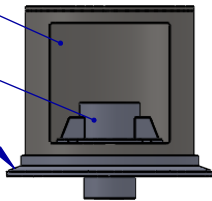
- SINGLE PHASE TEFC MOTOR (≤ 10HP)
- 50 Hz INVERTER DUTY MOTOR
- UP TO 250 HP 3 PHASE MOTOR
- SANITARY MOTOR
- EXPLOSION PROOF MOTOR
- TRICLAMP MOUNT
- VAPOR SEALS, HIGH OR LOW PRESSURE
- STUFFING BOXES, SINGLE OR DOUBLE
- MECHANICAL SEALS
- ALTERNATE IMPELLER SIZES AND TYPES
- SANITARY FINISHES



ITEM	DESCRIPTION
1	MOTOR - 230/460/60, 3 PHASE, TEFC STANDARD, INVERTER DUTY (10:1), PAINTED FINISH
2	GEARBOX - HELICAL/BEVEL DRIVE, OUTPUT SPEED PER ORDER, ALUMINUM, PAINTED FINISH
3	PEDESTAL - MOUNTING FLANGE AND SEAL GLAND PER ORDER
4	SHAFT - LENGTH AND DIAMETER PER ORDER, 316SS TYP.
5	IMPELLER - SIZE, STYLE, & QTY PER ORDER, 316SS TYP.

ACRYLIC GUARD PROVIDED (NOT SHOWN)

SHOWN WITH MECHANICAL SEAL  
OPTIONAL TRICLAMP MOUNT



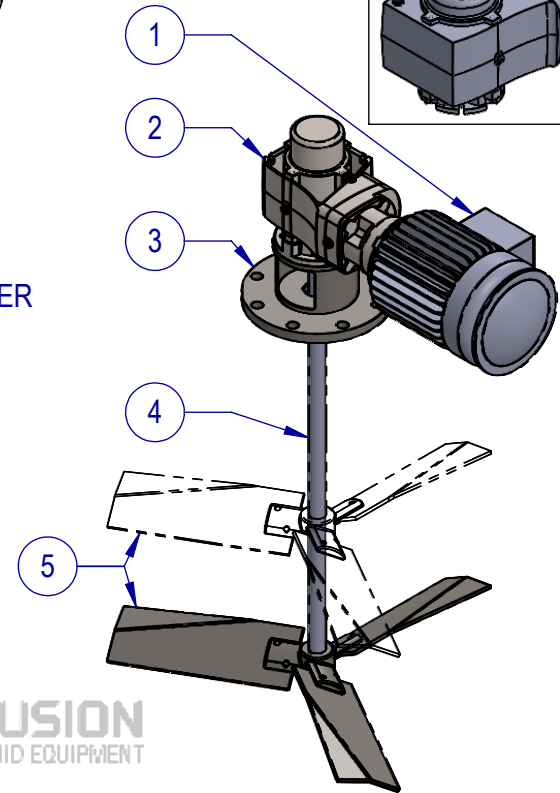
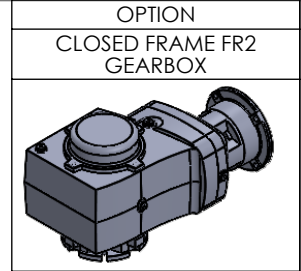
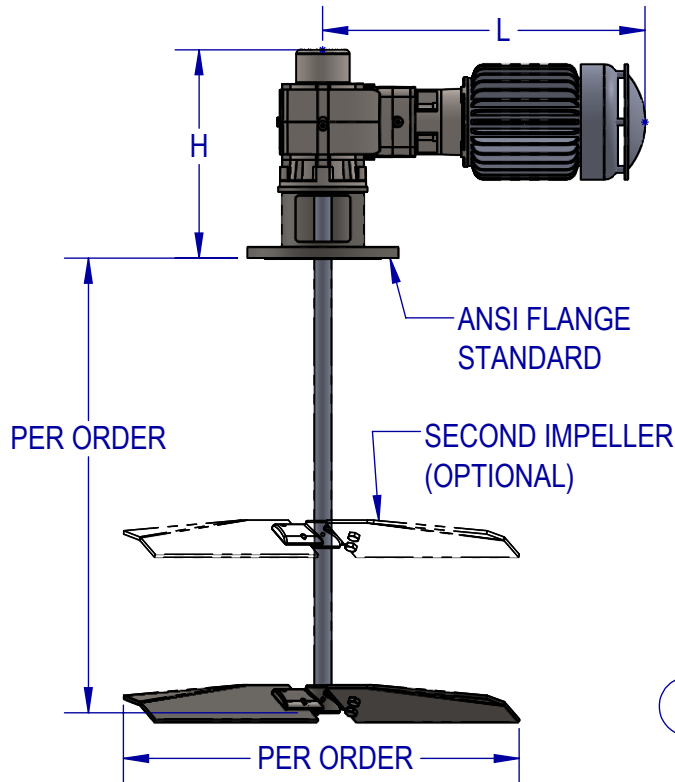
DIMENSIONS NOTED ARE APPROXIMATE AND ARE BASED ON TYPICAL MIXER CONFIGURATION. MOTOR AND SEAL SELECTION WILL AFFECT OVERALL DIMENSIONS. PLEASE CONTACT FUSION FOR FURTHER DETAILS.

DOUBLE REDUCTION					
DIM	FR2E-1F	FR2E-2F	FR2E-3F	FR2E-4F	FR2E-5F
DIM H	12.4"	13.3"	15.2"	15.8"	17.9"
DIM L	19.6"	20.4"	21.8"	26.1"	27.2"

SEAL TYPE	NOTES
LIP SEAL	SINGLE, DOUBLE, VITON, FDA RULON, & MORE
STUFFING BOX	LOW PRESSURE (15 PSI) OR HIGH PRESSURE (150 PSI)
MECHANICAL SEAL	SINGLE, DOUBLE, FLOWSERVE, CHESTERTON, ROPLAN, & MORE

**TYPICAL IMPELLER OPTIONS**

BOLTED PF3 HYDROFOIL	BOLTED PBT (PITCH BLADE TURBINE)	RADIAL	RUSHTON	PV3 PROP



	NAME	DATE
DRAWN	SB	5/25/22
CHECKED	MB	6/24/22

PROPRIETARY AND CONFIDENTIAL

THE INFORMATION CONTAINED IN THIS DRAWING IS THE SOLE PROPERTY OF FUSION FLUID EQUIPMENT LLC. ANY REPRODUCTION IN PART OR AS A WHOLE WITHOUT THE WRITTEN PERMISSION OF FUSION FLUID EQUIPMENT LLC IS PROHIBITED.



TITLE: FUSION FLOW FR2E-F  
TOP ENTRY FLANGE MOUNT MIXER  
HELICAL/BEVEL DRIVE CLOSED TANK

SIZE	DWG. NO.	REV
A	SALES-FR2E-#F-#	B
SCALE: 1:16	WEIGHT:	SHEET 1 OF 1

UNLESS OTHERWISE SPECIFIED:  
DIMENSIONS ARE IN INCHES.  
NO TOLERANCES IMPLIED.  
DO NOT SCALE DRAWING