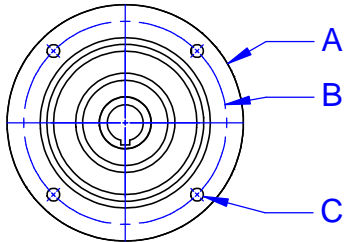


MOST COMMON AVAILABLE OPTIONS:

- SINGLE PHASE TEFC MOTOR
- 50Hz INVERTER DUTY MOTOR
- SANITARY MOTOR
- EXPLOSION PROOF MOTOR
- ALTERNATE IMPELLER SIZES AND TYPES
- SANITARY FINISHES

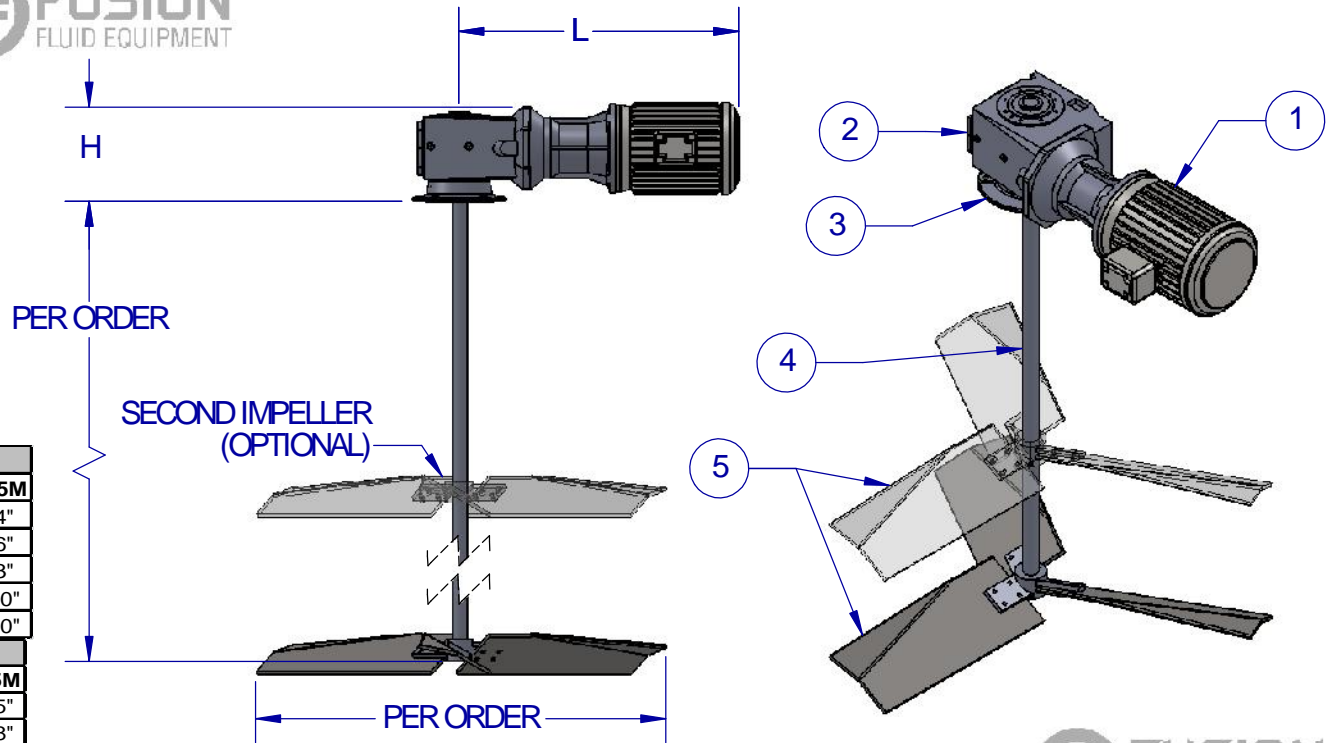


MOUNTING DETAIL



ITEM	DESCRIPTION
1	MOTOR-230/460/60, THREE PHASE, TEFC STANDARD, INVERTER DUTY (10:1), PAINTED FINISH
2	GEARBOX-HELICAL/BEVEL OUTPUT SPEED PER ORDER, PAINTED FINISH
3	MOUNT - OPEN TANK MOUNT- SEE TABLE FOR DETAILS
4	SHAFT-MATERIAL AND SIZE PER ORDER
5	IMPELLER-STAINLESS STEEL, SIZE, STYLE, & QTY PER ORDER

DIMENSIONS NOTED ARE APPROXIMATE AND ARE BASED ON STANDARD MIXER SELECTION. PLEASE CONTACT FUSION FOR EXACT DIMENSIONS.

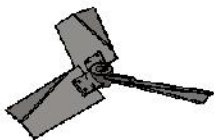


# BEARING HOUSING OPTIONS	
0	STANDARD DUTY/STANDARD SPAN
-1	HEAVY DUTY/STANDARD SPAN
-2	SEVERE DUTY WIDE SPAN/VIRTUAL DRYWELL
-4	SEVERE DUTY WIDE SPAN/TRUE DRYWELL

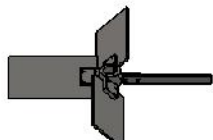
DOUBLE REDUCTION					
DIM	FR2-1M	FR2-2M	FR2-3M	FR2-4M	FR2-5M
FLANGE (A)	5.51"	6.30"	7.87"	7.78"	9.84"
B.H.C. DIAMETER (B)	4.53"	5.12"	6.50"	6.50"	8.46"
BOLT HOLE DIA (C)	0.35"	0.35"	0.43"	0.43"	0.53"
DIM H	6.50"	7.00"	8.75"	9.50"	11.50"
DIM L	19.50"	20.00"	26.00"	29.00"	31.50"

TRIPLE REDUCTION					
DIM	FR3-1M	FR3-2M	FR3-3M	FR3-4M	FR3-5M
FLANGE (A)	7.87"	9.84"	11.81"	13.78"	15.75"
B.H.C. DIAMETER (B)	6.50"	8.46"	10.43"	11.81"	13.78"
BOLT HOLE DIA (C)	0.43"	0.55"	0.55"	0.71"	0.71"
DIM H	11.00"	12.50"	13.50"	17.50"	22.00"
DIM L	15.50"	22.50"	29.00"	35.00"	37.50"

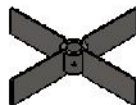
TYPICAL IMPELLER OPTIONS



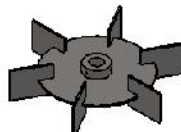
BOLTED PF3 HYDROFOIL



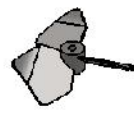
BOLTED PBT (PITCH BLADE TURBINE)



RADIAL



RUSHTON



PV3 PROP

	NAME	DATE
DRAWN	JDF	10/04/12
CHECKED	PIC	10/04/12

PROPRIETARY AND CONFIDENTIAL

THE INFORMATION CONTAINED IN THIS DRAWING IS THE SOLE PROPERTY OF FUSION FLUID EQUIPMENT LLC. ANY REPRODUCTION IN PART OR AS A WHOLE WITHOUT THE WRITTEN PERMISSION OF FUSION FLUID EQUIPMENT LLC IS PROHIBITED.

UNLESS OTHERWISE SPECIFIED: DIMENSIONS ARE IN INCHES. NO TOLERANCE IS IMPLIED. DO NOT SCALE DRAWING



TITLE: FUSION FLOW FR-M TOP ENTRY CIRCULAR MOUNT MIXER HELICAL/BEVEL DRIVE OPEN TANK

SIZE	DWG. NO.	REV
A	SALES-FR#-#M-#	A
SCALE: 1:24	WEIGHT:	SHEET 1 OF 1