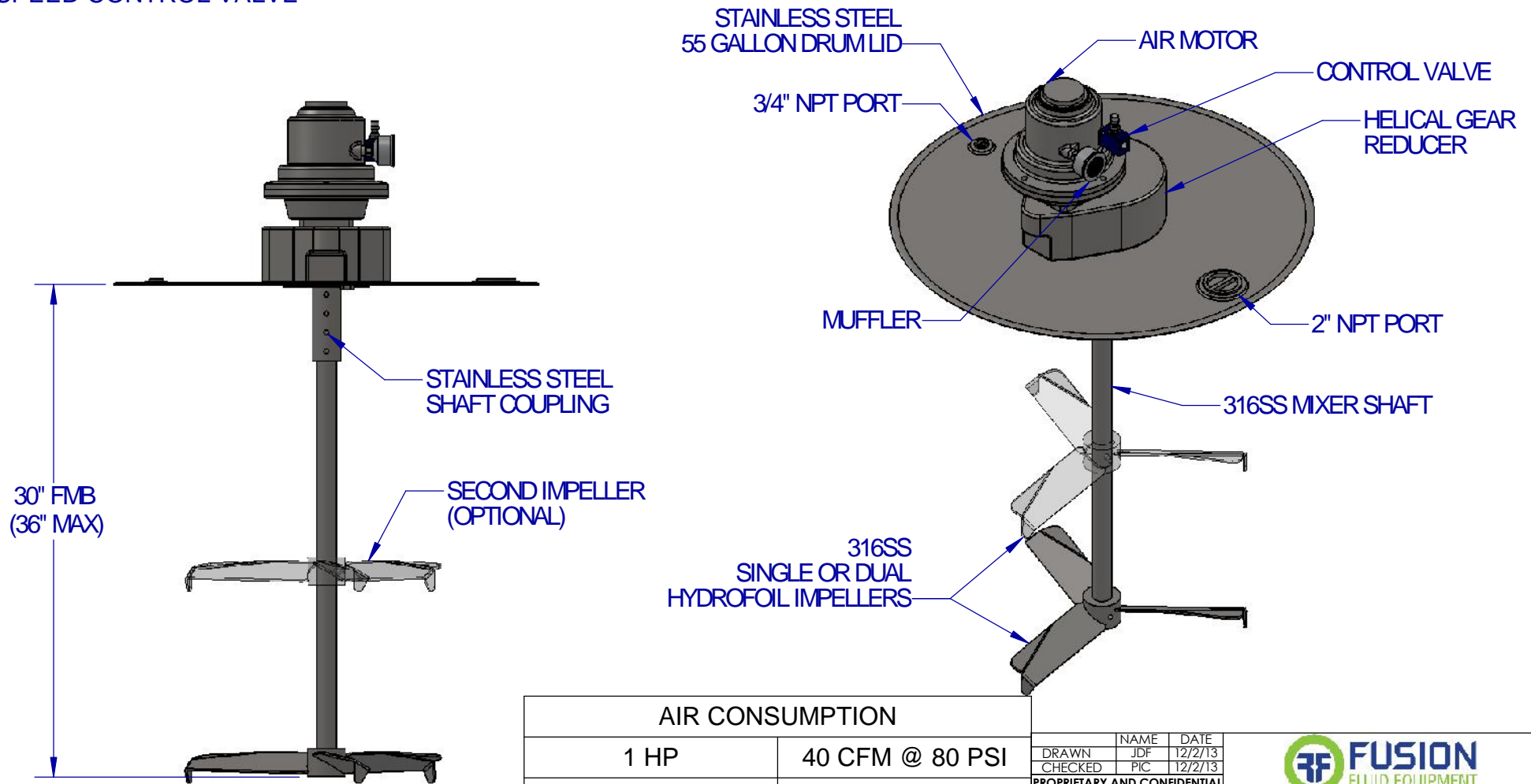


STANDARD FEATURES:

- PAINTED AIR MOTOR WITH MUFFLER
- HELICAL GEARBOX - 5:1 REDUCTION RATIO
- 350 RPM NOMINAL OUTPUT
- 55 GALLON DRUM LID WITH TWO STANDARD NPT PORTS
- 316SS WETTED PARTS
- 1" X 30" FMB SHAFT STANDARD (UP TO 36" MAX)
- SINGLE OR DUAL HYDROFOIL IMPELLERS
- WITH SET SCREW ATTACHMENT
- SPEED CONTROL VALVE

OPTIONAL FEATURES:

- PNEUMATIC CONTROLS
- FILTER/REGULATOR/LUBRICATOR (FRL)
- ALTERNATE IMPELLER SIZES AND TYPES
- ALL STAINLESS STEEL UPGRADE WITH STAINLESS MOTOR
- STAINLESS MOUNT & STAINLESS FASTENERS
- SANITARY FINISHES



30" FMB
(36" MAX)



EST WT: 63-82 LBS (DEPENDING ON HP AND OPTIONS)

AIR CONSUMPTION	
1 HP	40 CFM @ 80 PSI
2 HP	60 CFM @ 70 PSI
3 HP	90 CFM @ 100 PSI

NAME	DATE
DRAWN JDF	12/2/13
CHECKED PIC	12/2/13

PROPRIETARY AND CONFIDENTIAL

THE INFORMATION CONTAINED IN THIS DRAWING IS THE SOLE PROPERTY OF FUSION FLUID EQUIPMENT LLC. ANY REPRODUCTION IN PART OR AS A WHOLE WITHOUT THE WRITTEN PERMISSION OF FUSION FLUID EQUIPMENT LLC IS PROHIBITED.

WHILE FUSION FLUID EQUIPMENT LLC STRIVES TO MAINTAIN THE INTEGRITY OF A DESIGN AS APPROVED, FUSION FLUID EQUIPMENT LLC RETAINS THE RIGHT TO MAKE MODIFICATIONS DURING THE MANUFACTURING PROCESS TO IMPROVE FIT, FORM, AND FUNCTION OF THE DESIGN WITHOUT CUSTOMER NOTIFICATION OR CONSENT.

UNLESS OTHERWISE SPECIFIED:
DIMENSIONS ARE IN INCHES.
NO TOLERANCE IS IMPLIED.
DO NOT SCALE DRAWING



TITLE: DRUM LID MIXER GEAR DRIVE AIR

SIZE	DWG. NO.	REV
A	SALES-BGA-#D	A
SCALE: 1:16	WEIGHT:	SHEET 1 OF 1