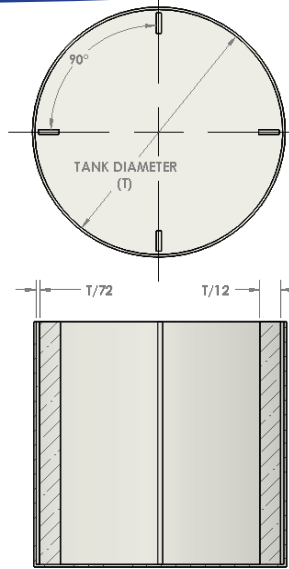


Reference Data

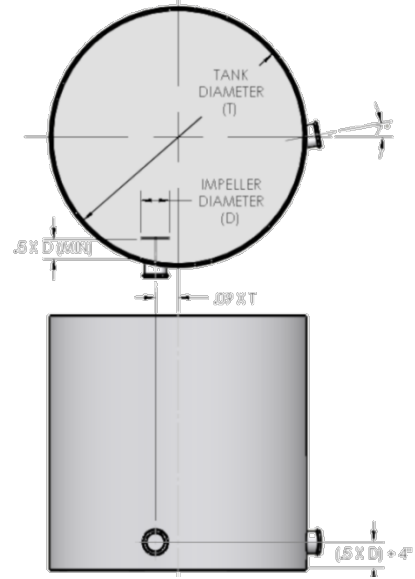
Mixer Mounting Guidelines

FIXED MOUNT WITH BAFFLES

- Optimal for top entry.
- Mount mixer vertically in the center of the tank.
- Three or four baffles should be spaced evenly around tank. Four baffles are preferred. (top left)
- Tank manufacturer should determine baffle thickness and mounting.



FIXED MOUNT WITH OPTIMAL BAFFLES



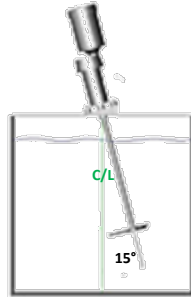
SIDE ENTRY MOUNT

SIDE ENTRY

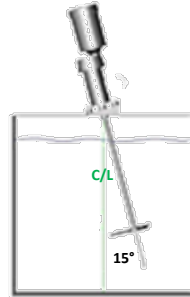
- Optimal for side entry.
- Mount mixer horizontally.
- There are two preferred mountings – offset and angled. (top right)
- All mounting bolts on flange should “straddle center”.

OTHER TOP ENTRY CONFIGURATIONS

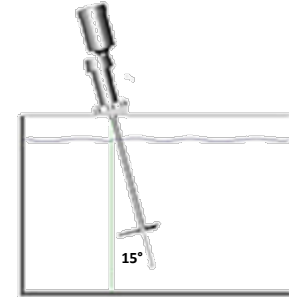
- Mixers without baffles should be oriented 15° from vertical for optimal flow pattern.
- Mixers without baffles should be offset to the right of center (as shown) to prevent vortexing.
- For large applications, use a vertical offset mount where mixer is oriented vertically and offset from tank center by 1/4 of the tank diameter (T), as allowed by the impeller diameter (D).



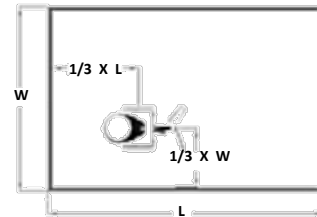
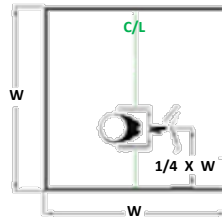
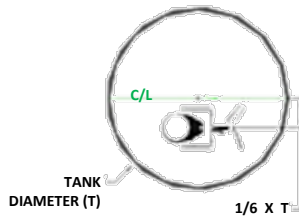
**FIXED ENTRY – NO BAFFLES
CYLINDRICAL TANK**



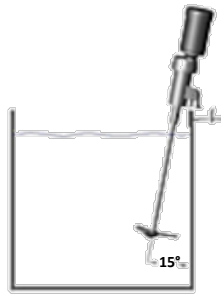
**FIXED ENTRY – NO BAFFLES
SQUARE TANK**



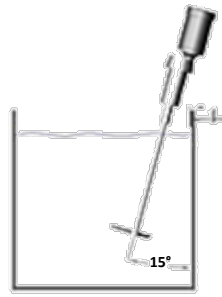
**FIXED ENTRY – NO BAFFLES
RECTANGULAR TANK**



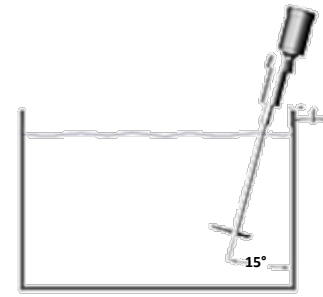
FIXED MOUNT MIXERS WITHOUT BAFFLES



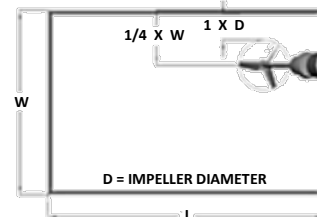
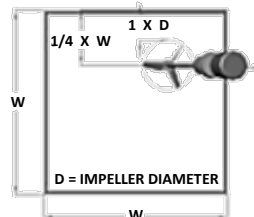
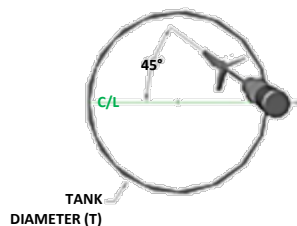
**CLAMP MOUNT – NO BAFFLES
CYLINDRICAL TANK**



**CLAMP MOUNT – NO BAFFLES
SQUARE TANK**



**CLAMP MOUNT – NO BAFFLES
RECTANGULAR TANK**



CLAMP MOUNT MIXERS WITHOUT BAFFLES