

# Fusion Pro Stainless Series

## All Stainless Portable and Fixed Mount Mixers



**GEAR DRIVE WITH CLAMP MOUNT**



**DIRECT DRIVE WITH CLAMP MOUNT**



**GEAR DRIVE WITH PLATE MOUNT**

### FEATURES AND BENEFITS:

- Available to fit top entry configurations in open or closed tanks.
- Stainless steel, washdown-duty electric motors are available in a variety of sizes, phases, and voltages chosen based on your need. Explosion proof motors and air motors are also available.
- A complete line of stainless steel gearboxes and accessories provides a wide range of mixing speeds to match your application. Gear drive units come standard with H1 grade sanitary synthetic lubrication (lubed for life).
- Our unique one piece, 300 series stainless steel investment-cast bearing support housing is available with an integrated ball and socket for clamp mount applications or an integral flange for sealed and beam mount applications. Our ball and socket style clamp mounts provide portability and ultimate flexibility while giving a wide range of adjustability that allows for optimal positioning.
- The dual bearing design provides added strength and durability. Pro Series Mixers are very easy to maintain; they disassemble and re-assemble in just minutes!
- Sealed tank configurations can be achieved through the use of FDA-compliant Lipseals, High Pressure Stuffing Boxes, and assorted Mechanical Seals.
- ALL mounting components are 300 series stainless steel. Wetted components are standard in 316L stainless steel.

### MOUNTING OPTIONS:



Cup



Clamp



Plate

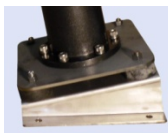


Plate with Angle Risers



ANSI Flange



TriClamp

### DESIGN INTENT

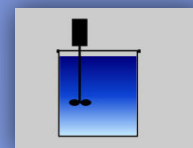
This all stainless steel version of our Pro Series mixer is also lightweight and rugged. The one-piece, investment-cast stainless steel bearing housing has two oversize bearings for high performance and a long service life.

### EXAMPLE APPLICATIONS

- Biopharmaceutical
- Food and Beverage
- Chemical Processing
- Industrial Blending
- Industrial Mixing
- Waste Water Treatment in Corrosive Conditions & Much More!

### SPECS

- Direct Drive: ¼ - 2HP  
1150-1750 RPM
- Gear Drive ¼ - 2HP  
175-350 RPM
- Batch: 5 to 3,000 Gallons
- Shaft Length: Up to 120" FMB



Top Entry



[www.fusionfluid.com](http://www.fusionfluid.com)