

# Fusion Cirrus Mixer

## Medium Batch, Stainless Sanitary Mixers



**GEAR DRIVE WITH  
MECHANICAL SEAL**



**DIRECT DRIVE  
WITH FDA LIPSEAL**

### FEATURES AND BENEFITS:

- ✱ Stainless steel sanitary mixers for top entry configurations with sealed tanks.
- ✱ Mixer-duty electric and air powered motors are available with a wide variety of sizes, phases, and voltages. Special motor features include washdown duty, explosion proof, DC electric, inverter duty, and many more.
- ✱ We provide you with a complete line of stainless steel gearboxes and accessories to match your application's needs.
- ✱ Sanitary mixer designs utilize 300 series stainless steel housings with dual bearings allowing reduced vibrations and longer shaft lengths (up to 72" FMB). Our housings provide easy access and quick maintenance of seal components.
- ✱ Various seal options include FDA Rulon, EPDM, and Viton lipseals, mechanical seals and more. These availabilities help to address any special demands of your application.
- ✱ All wetted parts are standard in 316L stainless steel with passivation and electropolish available. We offer a variety of impeller styles and sizes to choose from based upon the need of your application.

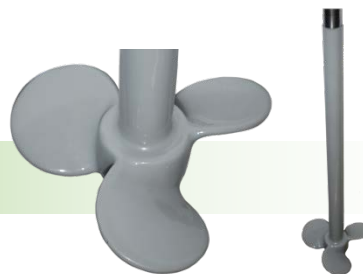
### MOUNTING OPTIONS:



ANSI  
Flange



TriClamp  
Flange



See Pg. 4 for Shaft  
and Impeller  
Coating Options.

### DESIGN INTENT

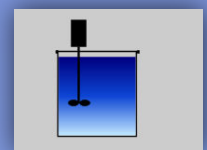
These heavy duty, all stainless steel, sanitary mixers are designed to meet your sanitary requirements for medium-sized batches or in applications where higher pressures exist.

### EXAMPLE APPLICATIONS

- Pharmaceutical
- Biotechnology
- Food Preparation
- Beverage
- Corrosive Conditions & Much More!

### SPECS

- Direct Drive: ¼ - 2HP  
1150-1750 RPM
- Gearmotor: ¼- ¾ HP  
Up to 350 RPM
- Batch: 5 to 1,000  
Gallons
- Shaft Length:  
Up to 72" FMB



Top Entry



www.fusionfluid.com