

# Fusion Axiom Mixer

## Small Batch, Autoclave Sanitary Mixers

### DESIGN INTENT

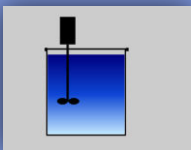
With a clean and simple design, these autoclave-capable, sanitary mixers are designed to meet your FDA, 3A, USP-VI, or BPE requirements.

### EXAMPLE APPLICATIONS

- Pharmaceutical
- Biotechnology
- Food Preparation
- Beverage
- Corrosive Conditions & Much More!

### SPECS

- Gearmotor:
  - 30-100 Watts;
  - 20-600 RPM
- Batch: 1 to 100 Gallons
- Shaft Length:
  - 18" Std; Up to 30" FMB



Top Entry



www.fusionfluid.com



**ELECTRIC MOTOR WITH ANSI FLANGE MOUNT**



**PNEUMATIC MOTOR WITH TRICLAMP MOUNT**



**ELECTRIC MOTOR WITH TRICLAMP MOUNT**

### FEATURES AND BENEFITS:

- Sanitary mixers for top entry configurations with sealed tanks.
- Ultra-clean mixer design allows easy disassembly for autoclave sanitation processes. Housings have integral 2" TC mount and are standard in FDA plastic (USPVI), yet other TC adapters are available.
- Electric gearmotors (IP65 and ROHS compliant) provide up to 100 watts at constant torque from 20-600 RPM.
- Featured seal options include FDA Rulon lipseals (USPVI) or carbon/ceramic/Viton mechanical seals.
- Shafts and impellers are standard in 316L stainless steel. We offer a variety of impeller styles and sizes to choose from based upon the need of your application.
- All wetted parts are finished to 20Ra as standard, with 15Ra and 8Ra polished finishes optional. Passivation and electropolish are also available.

### MOUNTING OPTIONS:



ANSI Flange



TriClamp Flange



See Pg. 19 for Sanitary Impeller Details.